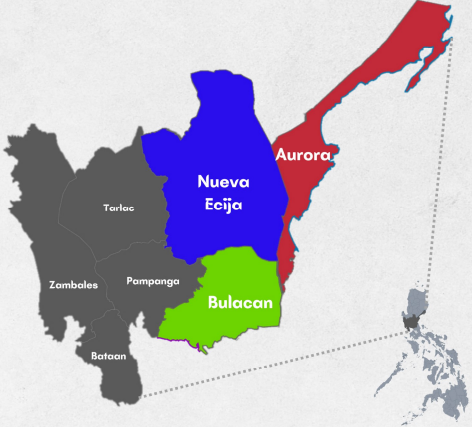


CENTRAL LUZON: REGION III

Region III, is an administrative region in the Philippines occupying the central section of Luzon. It covers 7 provinces, namely, Aurora, Bataan, Bulacan, Nueva Ecija, Pampanga, Tarlac, and Zambales.

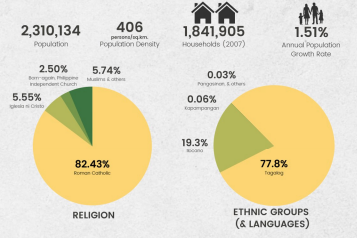


Nueva Ecija

AGRICULTURE
COMMERCIAL & INSTITUTIONAL

Known as the "Rice Bowl of the Philippines," Nueva Ecija is the biggest rice producer in Central Luzon and the Philippines. It is also the largest province in the region with 27 municipalities and 5 component cities.

- Palayan City** - Capital City - Residential with outside urban areas for agriculture and inland fisheries
- Cabanatuan** - "Economic Heart of Nueva Ecija" - 1st class component city - Largest and most populous city of the province - Hub for education, medicine, entertainment, and transportation
- Gapan** - "Footwear Capital of the North" - Oldest town in Nueva Ecija - Agri-based and footwear industries
- Science City of Muñoz** - Site for agricultural research & technology centers (e.g. PRRI, PCC, NFFTRC) and the Central Luzon State University (CLSU) - Rice trading

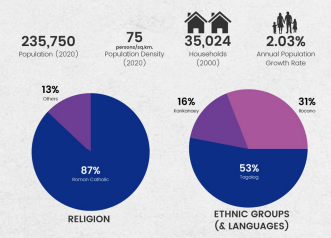


Aurora

TOURISM
NATURE & HISTORICAL

Aurora is a province located in the north-eastern part of Central Luzon, facing the Pacific Ocean in the east. It is also the least populated province in Central Luzon.

- Baler** - Capital City and oldest municipality - Where President Manuel L. Quezon and his wife, Dona Aurora Aragon, came from - Often considered the northern capital of Aurora
- Casiguran** - Most developed town in Dicalad, boasting an airport, a full-scale hospital, and white sandy beaches.
- Dingalan** - Nestled at the foot of Sierra Madre Mountain Range - A portion of barangay Umiray was proclaimed as a Special Economic Zone by President Estrada in January of 2000.
- Maria Aurora** - Home of the Balete Tree (centuries-old balete that is the biggest in Asia) - The only non-coastal town in the Province and is largely a mountainous area

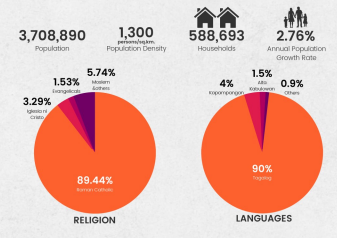


Bulacan

INDUSTRIAL
& HISTORICAL

Dubbed as the "Northern Gateway from Manila," due to its proximity to Metro Manila. It is the third-most populous province in the Philippines. It has 21 municipalities and 3 component cities.

- Malolos** - Capital City of Bulacan - Historical site of the constitutional convention of 1898 that led to the establishment of the First Philippine Republic
- Meycauayan** - Got its name from the Filipino term may kawayan which means "with bamboo" - Considered as the center of fine jewelry production in the Philippines and in Asia - Place to purchase low-priced jewelry
- San Jose del Monte** - Largest local government unit within the province of Bulacan and Central Luzon - Home to some of the biggest resettlement areas in the Philippines
- Bulacan** - Location of the New Manila International Airport aka Bulacan International Airport that is currently under construction



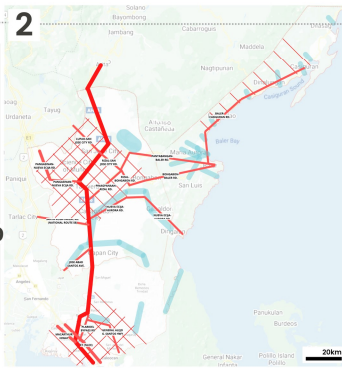
GENERAL LEGEND

- Major Road
- Minor Roads
- Desired Linkage
- Matrix Grid
- Waterbodies
- Balanced Urban Developed Cities
- Cities & Municipalities
- Development Nodes
- Green Infrastructure

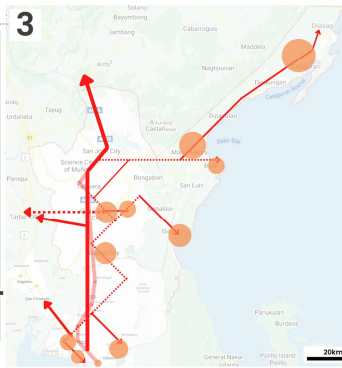
Cities & General Flow



Existing Connections



Proposed Connections



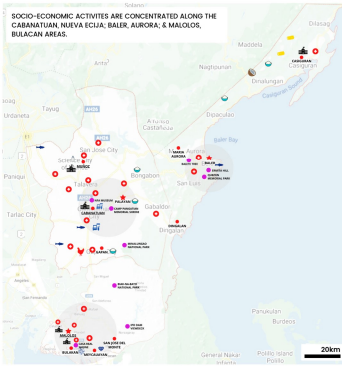
ISOSTATIC MAPS

SOCIO-ECONOMIC FACTORS, GREEN AND GRAY INFRASTRUCTURES, AND ASSIGNING KEY CITIES OF THE MAB REGION ARE CONSIDERED DURING THE STEPS IN CREATING THE METRO MATRIX MAP:

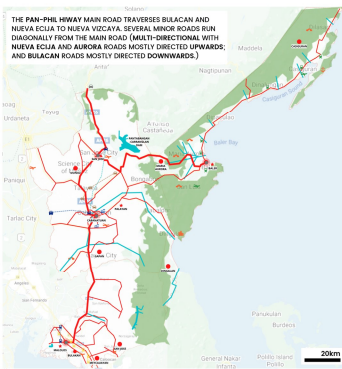
- 1) GENERAL FLOW OF THE MAIN CONNECTION IS DERIVED FROM THE GIVEN INFORMATION;
- 2) EXISTING CONNECTIONS PROVIDE A DEFINED DIRECTION;
- 3) THE PROPOSED CONNECTIONS ARE THEN ESTABLISHED.

THESE RESULT IN THE CONSOLIDATION OF THE NUEVA ECIJIA-AURORA-BULACAN METRO MATRIX MAP.

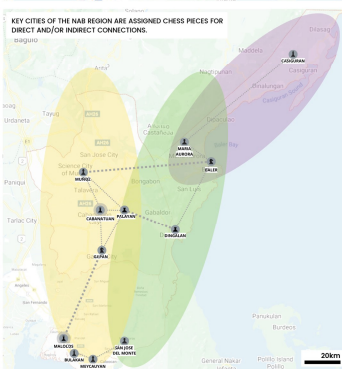
Socio-Economic



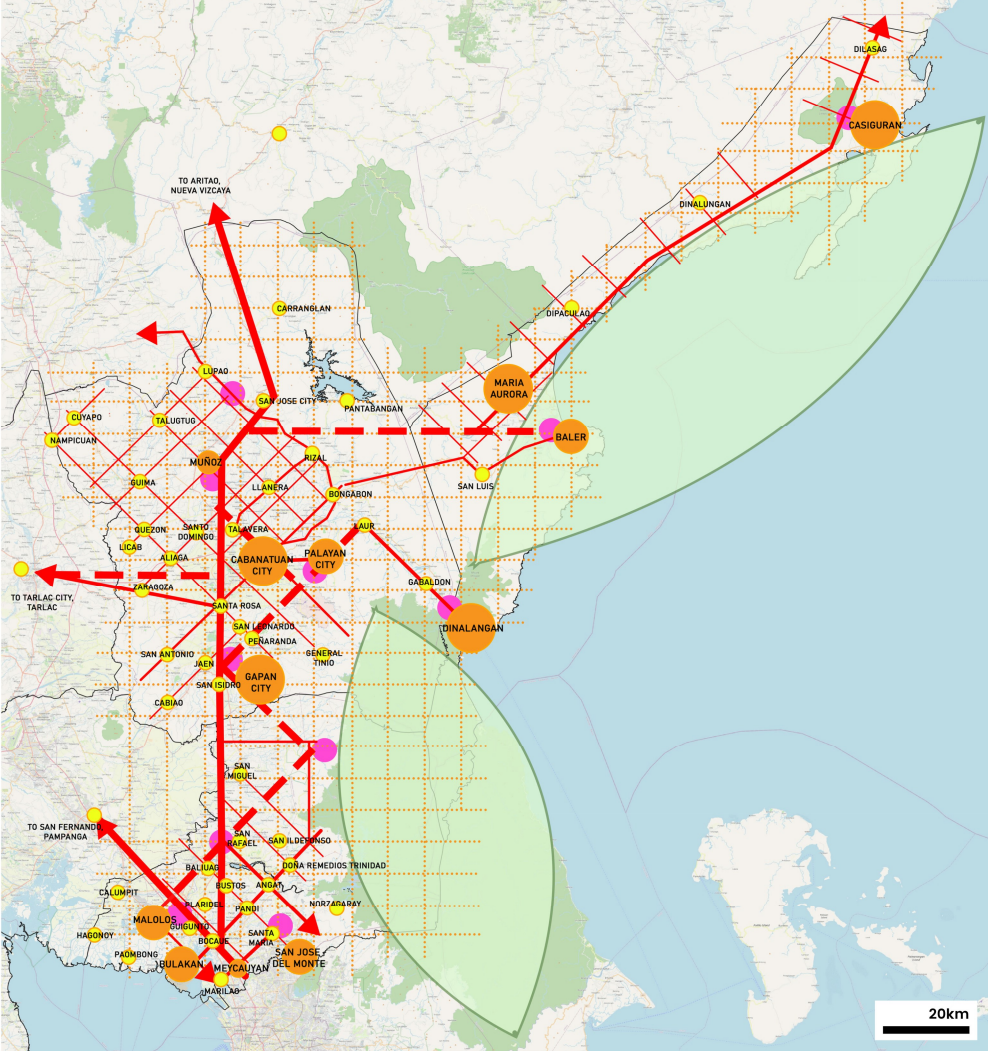
Infrastructures



Chess Pieces



METRO MATRIX MAP



SOCIO-ECONOMIC FACTORS

- Capital Cities
- Key Cities
- Educational Facilities
- Health Facilities
- ECONOMIC ACTIVITIES: Agriculture, Industry, Social, Sperry, Jewelry, Pyrotechnics, Tourism (Landmarks/Historical sites)

GREEN INFRASTRUCTURE

- Forestland
- Rivers, Creeks, Dams

GRAY INFRASTRUCTURE

EXISTING INFRASTRUCTURES

- Capital Cities
- Major Roads
- Minor Roads
- Key Cities
- Major Intersections
- Airfield / Airstrips
- Transit (Bus) Stations

FUTURE INFRASTRUCTURES

- Road-to-Neural Roads
- Central Luzon Link Expressway
- East Dailon Bypass Project
- Bridge Projects
- New Manila International Airport
- New Naval Facilities
- New Convention Center
- PNR Line Tulunan to Malolos
- Mindanao Railway Project
- MRT 7 Extension

KEY CITIES

- KING** - Cabanatuan, Nueva Ecija & Malolos, Bulacan
- QUEEN** - Casiguran, Aurora & Bulacan, Bulacan
- BISHOP** - Science City of Muñoz, Nueva Ecija & Meycauayan, Bulacan
- ROOK** - Palayan, Nueva Ecija & Dingalan, Aurora
- KNIGHT** - Gapan, Nueva Ecija & Baler, Aurora
- PAWN** - Maria Aurora, Aurora & San Jose del Monte, Bulacan

ZONES

- Major Economic Zone
- Agricultural Development & Protected Areas
- Tourism Zone