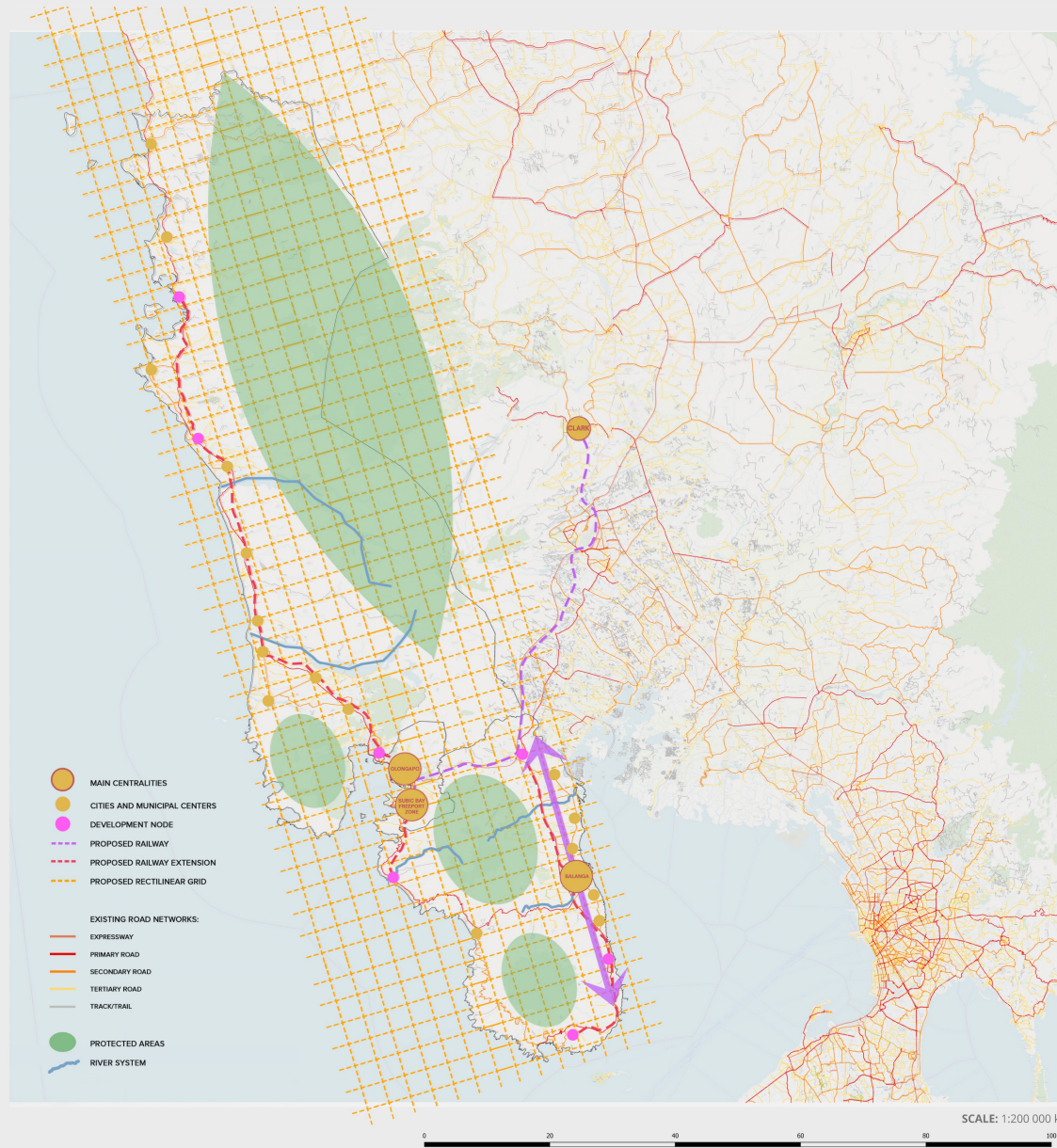


ZAMBALES-OLONGAPO-BATAAN ISOSTATIC MAP



PLANNING PROCESS

- Different maps from various sources were used to plot existing green and gray infrastructure, and transport links (trains, major highways, and airports)
- Hazard maps from Project NOAH were also obtained and used as reference to identify which areas can be developed or where interventions must occur
- Major centralities where high concentration of people gather, and where major developments occur were also determined
- Development nodes, or potential areas for growth were mapped out, and necessary extensions for roads and railways were put in place to strengthen their connection to major centralities

GREEN INFRASTRUCTURE

- Remaining rivers, watersheds, and other green areas for protection as marked in the interpretation map
- Water resources are important as they are not only used for irrigation, but also for navigation and fishing
- Protected areas are also mapped for they have the potential to protect biodiversity and wilderness, promote tourism and recreation, and the sustainable use of resources. These areas are vital and must be preserved from infrastructure such as roads and railways
- **Protected areas**
 - Bucaog River/Watershed
 - Sto. Tomas River/Watershed
 - Olongapo Watershed Forest Reserve
 - Talisay River/Watershed
 - Almacen River
 - Bataan National Park
 - Roosevelt Protected Landscape
 - Watershed Purposes of Mariveles

GRAY INFRASTRUCTURE

- Refers to transportation links present in growing metropolitan areas
- Primary, secondary and tertiary roads are marked in the interpretation map as they enhance the connectivity of developing municipalities
- Existing expressways and railways were mapped out, then possible extensions were also marked to cater to the needs of commuters
- Nodes with high concentration of people can be the site for transport hubs to encourage the use of public transport and minimize the use of private vehicles
- **Major Roads/Expressways**
 - Bataan Provincial Highway
 - Jose Abad Santos Avenue
 - Subic-Clark-Tarlac Expressway
 - Subic Freepoint Expressway
- **Minor/Secondary Roads**
 - Old National Road (Bataan)
 - Roman Expressway
 - Bagac-Mariveles Road
 - SBMA-Morong Road
 - Governor J.J. Linao National Road
 - Olongapo-Bugallon Road
 - Magsaysay Drive
 - Rizal Avenue

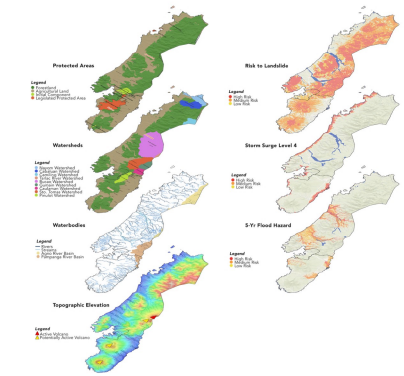
MAJOR CENTRALITIES

- City of Balanga**
 - 4th class Component City
 - Residential-agricultural city, with a rapidly growing commercial sector
 - Prime commercial hub and educational center of Bataan
- Olongapo City**
 - 1st class Highly Urbanized City
 - Economy is based on commerce, services, and industry
 - Contains the Subic-Clark-Tarlac Expressway increases the demand of residential and commercial areas because of investors and tourists that can easily access the city
- Subic Bay Freepoint Zone**
 - A special economic zone of self-sustaining tourism, industrial, commercial, financial, and investment center to generate employment opportunities.
 - Additional commercial activities in the SBFZ are manufacturing-related businesses, electronic communications and computer industries, warehousing and transshipment, banking, education, and a vibrant tourism, resort and lodging industry
 - Has strategic advantage economically, through its ability to operate as a deep water commercial port

DEVELOPMENT NODES

- Iba**
 - 2nd class Municipality
 - Economy is based on agriculture, specifically on crops, vegetables, and livestock
 - Consists of beaches that also serve as popular tourist destinations
 - Includes a central business district with commercial and financial establishments
- Masinloc**
 - 1st class Coastal Municipality
 - Economy is based on fishing (Scarborough Shoal), construction and agriculture
 - Comprises of marine sanctuaries that also serve as tourist attractions
- Subic**
 - 1st class Coastal Municipality
 - Seen as the major area for the development of a water hub for the SCAD Corridor and will continue to be developed.
 - Buffer zones are recommended to set future urban developments at some distance from the Olongapo City/ Subic Freepoint areas
 - New development nodes shall most likely be sited between Subic town and the Hanjin developments at the Redondo Peninsula
- Mariveles**
 - 1st class Municipality
 - Hosts the Philippines' first economic zone, first petrochemical industrial estate, and the Plastic City
 - Includes the Freepoint Area of Bataan, a 1,691-hectare industrial complex
 - Only freepoint in the country with a 10.9 million cubic meter-capacity dam, and delivers 14 million gallons of water daily
- Hermosa**
 - 1st class Municipality
 - Agri-industrial and light manufacturing industries
 - Serves as a junction of major highways
 - Adapted for recreational and housing facilities of surrounding light to medium industries and residents
- Morong**
 - 3rd class Municipality
 - Known for tourist attractions, the Subic Bay International Airport, and the Bataan Nuclear Power Plant
 - Eyed for future developments such as manufacturing of component parts and assembly operations, as well as recreational facilities
- Limay**
 - 1st class Municipality
 - High employment rate for skilled and unskilled laborers due to big establishments
 - Encouraged to invest in recreational facilities

SUPPORTING MAPS



ZAMBALES-OLONGAPO-BATAAN MENTAL MAP



CHESSBOARD PLANNING

Piece	Role	City/Municipality
King	Central historic district that determines all strategies for the territory	Balanga
Queen	Main productive infrastructure that also consists of the financial center for commerce	Subic Olongapo
Bishop	Serves as the industrial and entrepreneurial fabric, and can be reached through long-distance travel	Limay Masinloc
Knight	Territorial sub-centers that provide support to the Queen and Bishop	Iba Hermosa Morong
Rook	Main secondary metropolitan centers whose role is to control borders	Mariveles
Pawn	Residential municipalities where residents of decongested areas can expand	Pilar Castillejos, etc.

ZAMBALES-OLONGAPO-BATAAN INTERPRETATION MAP

ARCH 162 KDC MAJOR PLATE | ALMACHAR, GANDINGCO, GREGORIO, IMPORTANTE, PARONDA, SICAT, TAN, TAPUCAR

A VISUALISATION OF THE POSSIBLE DIRECTION OF ZAMBALES-OLONGAPO-BATAAN'S SPATIAL DEVELOPMENT