

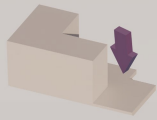
lacuna

THE MAGINHAWA LANDMARK HUB

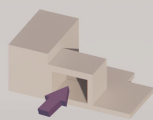
Jen Abigail Alano | Arch 22 Final Plate



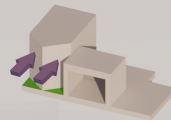
Maghinawa Street, located at Teacher's Village East, Diliman, Quezon City, is a hotspot for foodies and drinkers and is well-known for its fascinating, daring, and affordable dining options. Lacuna, defined as an interval or gap, tackles the design findings while addressing the need for it to stand out as a landmark hub. First, by function - we looked more into the activities people usually do before and after eating. People go to Maginhawa for the food but unconsciously they also need spaces to wait, to sit and walk around to digest, to find entertainment, and others. As it also provides a huge opportunity for start-up businesses to grow, spaces similar to a business hub is desirable for people who want to explore into business (given that the site is also a residential area). Secondly, by form - being a literal 'gap', it aims to provide the needed open spaces in the area. It also aims to maximize the lot shape and consider the outdoor event space through a cul-de-sac spacial relationship.



To maximize the shape of the lot, its shorter side, which extended to the back, were the areas for open spaces and parking



A 'gap' that would act as an outdoor event space and waiting area



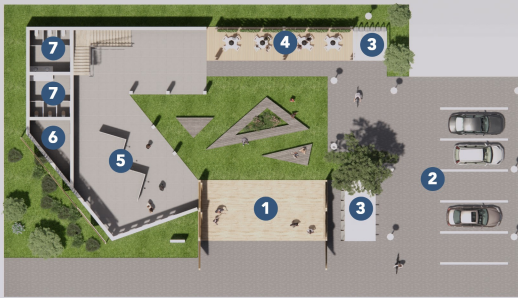
An inviting front facade with green spaces would contrast the closely adjacent buildings along the street



EAST ELEVATION



WEST ELEVATION



GROUND FLOOR PLAN WITH SITE DEVELOPMENT PLAN



SECOND FLOOR PLAN

- | | |
|-------------------------------------|------------------------------------|
| 01 WAITING AREA/OUTDOOR EVENT SPACE | 06 STORAGE |
| 02 CAR PARKING | 07 RESTROOMS |
| 03 BICYCLE PARKING | 08 LOUNGE |
| 04 TERRACE | 09 OFFICE |
| 05 OPEN EXHIBIT SPACE | 10 INDOOR EVENT SPACE/BUSINESS HUB |

