



# PROJECT CRUSADE AGAS AY NABE-AS

THE BESSANG PASS NATURAL MONUMENT AND LANDMARK  
ETHNOBOTANICAL PARK

ALIANZA, LEIJH HANNE Y. | 2019 - 05679 | L ARCH 132

## PROJECT BACKGROUND

The Bessang Pass Natural Monument/Landmark (BPNML) is known as one of the protected areas (PA) with historical landmarks within the Philippines. This PA is one of the few tropical pine reserves within the Philippines characterized with unique geological, biological, and ecological features (BPNML, PAMP, 2021). Because of its rich historical and ecological resources, including plants used for medicinal, crafting, and culinary purposes, there is a need to showcase these resources in a physical space. This project showcases appropriate design interventions within the BPNML, particularly through an ethnobotanical park, to create a synergy of ecological, historical, agricultural, and recreational developments within the area.

## DESIGN OBJECTIVES

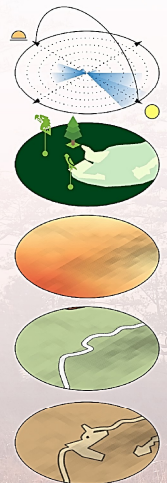
### BPNML AS NATURE'S APOTHECARY

- To showcase the ethnobotanical assets of the PA through the use of traditional medicinal plants
- To become a health and wellness sanctuary in BPNML
- To become a repository of plants used for medicinal, food, and crafting purposes
- To introduce how our relationship with our immediate environment has evolved through traditional medicine
- To reinforce local identity and culture with the use of local architecture and practices

## DESIGN PHILOSOPHY

### RESILIENT AND SUSTAINABLE PEOPLE-ENVIRONMENT INTERACTIONS

This project seeks to bring the historical, ecological, and agricultural resources of the site through a resilient, landscape-based approach in design interventions. As the landscape is continually shaped by natural organization principles and anthropocentric principles over time, this is a direct link towards sustainable people-environment interactions. The conception of the design is guided with the interdisciplinary perspective of human and ecosystem health. With the interaction of biophysical, biotic, and cultural interactions, a healthy ecosystem and human well-being is fostered.



## SITE INVENTORY

SCALE 1:5000 MTS

### SUN AND WIND PATH

- Strong NE Winds with wind speeds of 25 - 31 MPH (Strong breeze)
- Weaker SW Winds with wind speeds of 0 - 18 MPH (Moderate breeze)

### BIODIVERSITY AND RESILIENCE

- Home to 500 Y.O. Taxus wallichiana Tree
- Sightings of Emerald Dove and Hawk Eagle
- Site boundaries are resilient

### ELEVATION

- Site elevation ranges from medium to high elevation

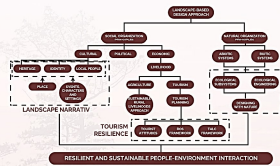
### ROAD NETWORKS

- Accessible by Market Road

### SITE BOUNDARIES

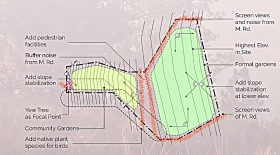
- Site area ranges from 0.5 - 1 Ha
- Presently occupied by farmlots

## THEORETICAL FRAMEWORK



## SITE ANALYSIS

SCALE 1:3000 MTS



## SWOT ANALYSIS

### STRENGTHS

- Existing Heritage Tree
- Existing terraced parking area
- Presence of sightings of endemic birds
- Site is known to host a variety of plants used for different purposes

### WEAKNESSES

- Illegal Timber poaching
- Unsustainable farming practices
- Need for the cultivation of Tiger Grass
- Road traverses the middle of the site
- Difficult terrain

### OPPORTUNITIES

- Existing terraced planting can be used as a community garden
- Division of skywalk as additional pedestrian facility
- Site can be used to generate needed revenue for the PA

### THREATS

- Developments may harm existing ecosystems/damage heritage trees
- Skywalks can become the main highlight of the site instead of natural features

## PESTLE ANALYSIS

### POLITICAL

Lack of access to the proper government agencies that are responsible for the preservation of the resources of the area

### ECONOMIC

There is a need to develop occupation facilities within the BPNML to boost local economy and generate new jobs

### SOCIO-CULTURAL

The site has a variety of plants being used for medicinal, culinary, and cultural purposes

### TECHNOLOGICAL

There is a need to improve existing roads and ecotourism facilities to ensure safety of the visitors and occupants

### LEGAL

Human and financial resources are limiting factors of the PA. Partners are benefiting from the PA

### ENVIRONMENTAL

The site is home to rare endemic species of flora and fauna. The site is also one of the few tropical pine reserves in the country

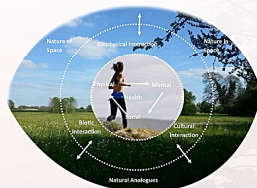
## DESIGN CONCEPT

### YEW TREE



A 500-year old Taxus wallichiana tree is currently situated on the site. This species of tree is known for its ethnomedicinal properties as its leaves and bark were found to be sources of taxol, a potent anticancer drug. The overall design aims to seek inspiration from its form. It also seeks to use the park as a venue where the PAs rich culture and history is celebrated and made known.

## CONCEPTUAL FRAMEWORK



Interdisciplinary perspective of human and ecosystem health. Seymour (2016)

## BUBBLE DIAGRAM

SCALE 1:3000 MTS



## LEGEND

- DROP-OFF POINT
- SKYWALK
- WELLNESS AND RESTORATION ZONE
- CRAFTING ZONE
- CRAFTING GARDEN
- EDIBLE GARDEN
- MEDICINAL GARDEN
- THERAPEUTIC GARDEN
- ARBORETUM AND NATURE TRAIL
- NATURAL HISTORY MUSEUM
- GREENHOUSE
- RESEARCH CENTER
- HERBARIUM
- PARK OFFICE A
- PARK OFFICE B
- COMFORT TOOM
- UTILITIES SHED
- PARKING LOT
- STORES
- COMMUNITY FIELD CULTIVATION AREA
- HERITAGE TREE (TREE PROTECTION ZONE)



PP-01  
ETHNOBOTANICAL PARK AND FIELD CULTIVATION AREA  
**AERIAL PERSPECTIVE**  
NOT TO SCALE



PP-02  
THERAPEUTIC GARDEN  
**SPOT PERSPECTIVE**  
NOT TO SCALE



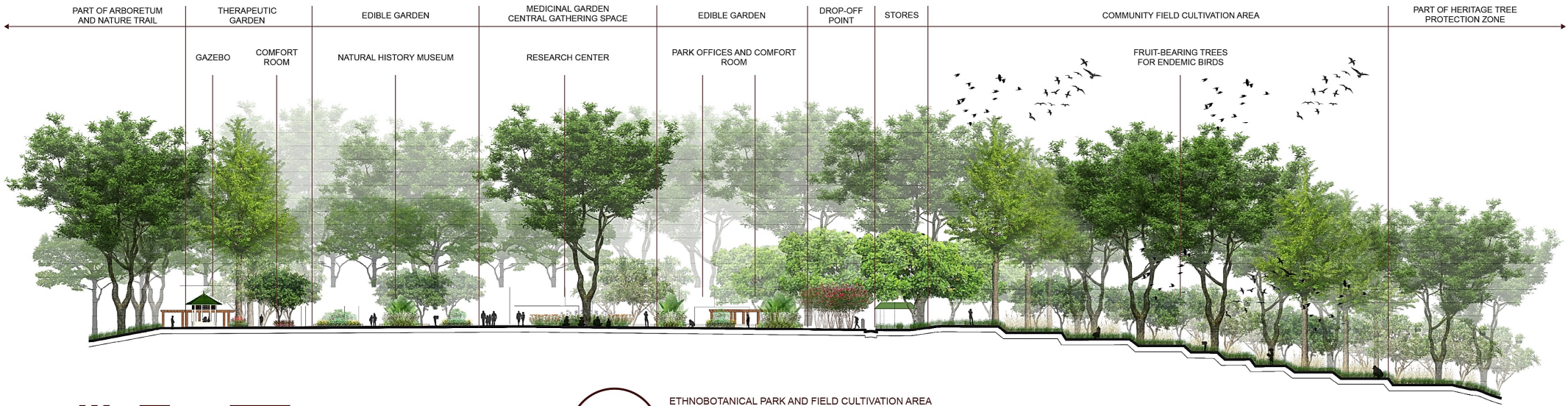
PP-03  
DROP-OFF POINT  
**SPOT PERSPECTIVE**  
NOT TO SCALE



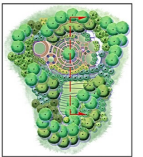
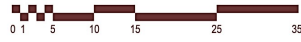
# PROJECT CRUSADE AGAS AY NABE-AS

THE BESSANG PASS NATURAL MONUMENT AND LANDMARK  
ETHNOBOTANICAL PARK

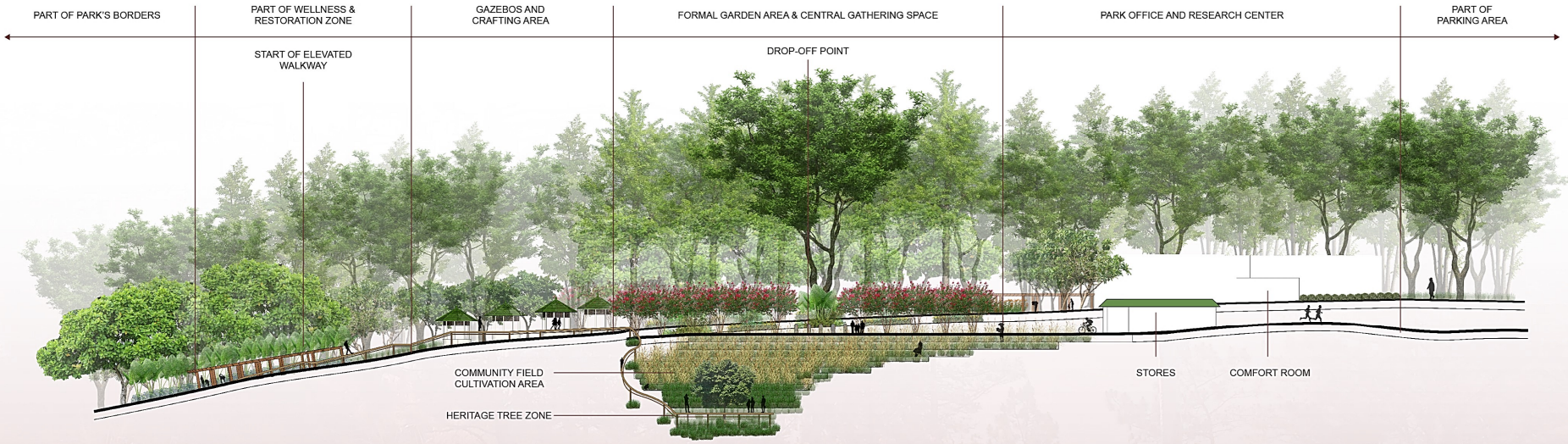
ALIANZA, LEIJH HANNE Y. | 2019 - 05679 | L ARCH 132



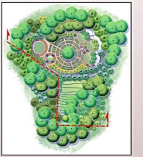
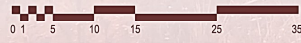
**SE-01** ETHNOBOTANICAL PARK AND FIELD CULTIVATION AREA  
**SECTION-ELEVATION Y - Y'**  
 SE-01 OF SE-02 SCALE 1:650 MTS.



**KEY PLAN**  
 SCALE 1:12000 MTS.



**SE-02** ETHNOBOTANICAL PARK AND FIELD CULTIVATION AREA  
**SECTION-ELEVATION X - X'**  
 SE-02 OF SE-02 SCALE 1:650 MTS.



**KEY PLAN**  
 SCALE 1:12000 MTS.



PROJECT CRUSADE  
**AGAS AY NABE-AS**

THE BESSANG PASS NATURAL MONUMENT AND LANDMARK  
 ETHNOBOTANICAL PARK