



# PROJECT CRUSADE

COMMUNITY-DRIVEN REVITALIZATION OF THE BESSANG PASS NATURAL MONUMENT/LANDMARK (BPNML) USING SUSTAINABLE AGRO-ECO TOURISM DEVELOPMENT

ALIANZA, LEIJH HANNEY. | 2019 - 05679 | LARCH 131

## PROJECT BACKGROUND

The Bessang Pass Natural Monument/Landmark (BPNML) is known as one of the protected areas (PA) with historical landmarks within the Philippines. Within the site lies the Bessang Pass Marker which celebrates the valor and victory of the 1,395 Filipino guerilla soldiers hailing from the 11th, 14th, 15th, 66th and 121st infantry regiments of the 3rd battalion of the United States Army Forces in the Philippines – Northern Luzon (USAFIP-NL) who participated in the Battle of Bessang Pass in June 1945 – leading to the liberation of the whole Luzon Island after the defeat of Japanese forces led by Gen. Tomoyuki Yamashita.

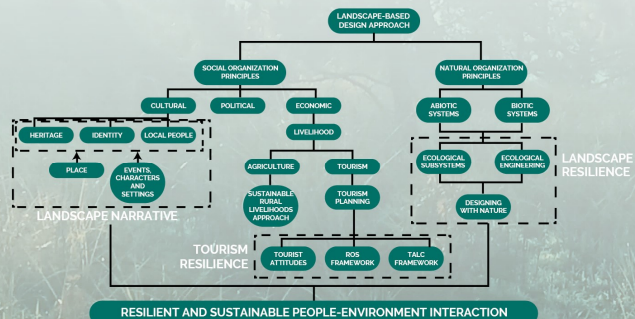
This PA is one of the few tropical pine reserves within the Philippines characterized with unique geological, biological, and ecological features (BPNML PAMP, 2021). Further, it is also dubbed as the summer capital of Ilocos Sur, with climates similar to that of Baguio City, and because of its steep, rolling terrains. Because of its rich historical and ecological resources, the site is known to have great potential for sustainable and resilient tourism. Thus, this project aims to create ecological, historical, and agricultural facilities driven by the local communities in the area. The addition of such facilities will boost local economy, and will create much more resilient communities within the area. This project showcases appropriate design interventions within the BPNML to create a synergy of ecological, historical, agricultural, and recreational developments within the area.

## DESIGN PHILOSOPHY

### "RESILIENT AND SUSTAINABLE PEOPLE-ENVIRONMENT INTERACTION"

This project seeks to bring the historical, ecological, and agricultural resources of the site through a resilient, landscape-based approach in design interventions. As the landscape is continually shaped by natural organization principles and anthropocentric principles over time, this is a direct link towards sustainable people-environment interactions. The creation of designs in this project will be guided using their Recreation Opportunity Spectrum, and the Tourist Area Life Cycle Framework. These frameworks takes the needs of the ecological systems in a landscape into account and helps create zones for tourism with regard to the carrying capacity of the area. It outlines 4 zoning classes depending on the resilience of the area, and the impact of the possible activities that will be done in a particular location. Simply put, this framework allocates high-impact activities to more resilient locations and low-impact activities to less resilient locations. With all these frameworks in mind, the ultimate goal of my design is to foster a sustainable people-environment interaction without degrading or disrupting already functioning systems within the PA.

## THEORETICAL FRAMEWORK



KEY PLAN  
SCALE 1:300,000,000 MTS.

## LEGEND

- 1 TAGUDIN-CERVANTES ROAD
- 2 AGRICULTURAL PARK
- 3 BPNML PARK GROUNDS
- 4 MARKET ROAD
- 5 NATURE TRAIL

BESSANG PASS NATURAL MONUMENT/LANDMARK (BPNML)  
**SDP-01 MASTER SITE DEVELOPMENT PLAN**  
SDP-01 OF SDP-04 SCALE 1:20000 MTS.



## DESIGN CONCEPT

"TO REMAIN AND TO CARRY ON: PRESERVING AND PROTECTING OUR CULTURAL, HISTORICAL, ECOLOGICAL, AND AGRICULTURAL RESOURCES"



USAFIP-NL PATCH



121ST INFANTRY REGIMENT PATCH

The BPNML is declared as a natural monuments because of its ecological resources and rich history. It is the site of the infamous "Battle of Bessang Pass" where the island of Luzon was liberated due to many Filipino guerrilla soldiers coming from the USAFIP-NL. The patches of the USAFIP-NL, and the 121st Infantry Regiment, which was the primary regiment that took most of the fire, had their battle cries engraved in it which says, "We Remained" and "Carry On". Seeking inspiration from their patches, this design seeks to preserve and to protect the existing cultural, historical, ecological, and agricultural resources of the BPNML in the same ways as the soldiers from the Battle of Bessang Pass protected and preserved our democracy and freedom. Moreover, the design sought inspiration from the Bolo, a weapon of choice by the 121st infantry regiment, and a staple harvesting tool of the farmers within the area, and numerous traditional symbols and patterns coming from the Kankaney Indigenous Peoples who were the first occupants of the area.



## SWOT ANALYSIS

### STRENGTHS

- Existing ENR Laws and policies are implemented by the LGU
- Site has high cultural and historical value and rich biodiversity
- Site has pre-existing ecotourism facilities
- Site has multiple farm plots dedicated to upland farming

### WEAKNESSES

- Site has risks of forest fires, landslides, rockfall and erosion
- Some areas are impassable due to the steep terrain
- Some areas lack proper slope stabilization facilities
- Improper waste disposal of tourists and occupants

### OPPORTUNITIES

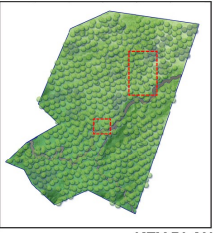
- Addition of natural and historical museum
- Establishment of materials recovery facilities
- Addition of ecological facilities and generation of new source of livelihood

### THREATS

- Unsustainable farming practices; unchecked development
- Disruption of functional ecosystems in the park
- More tourists could mean more pollution and overloaded carrying capacity of the site

## PESTLE ANALYSIS

<p><b>POLITICAL</b></p> <p>Lack of access to the proper government agencies that are responsible for the preservation of the resources of the area</p>	<p><b>ECONOMIC</b></p> <p>There is a need to develop ecotourism facilities within the BPNML to boost local economy and generate new jobs.</p>	<p><b>SOCIO-CULTURAL</b></p> <p>The site has great historical and cultural importance because of the Battle of Bessang Pass.</p>	<p><b>TECHNOLOGICAL</b></p> <p>There is a need to improve existing roadside and ecotourism facilities to ensure safety of the visitors and occupants</p>	<p><b>LEGAL</b></p> <p>Human and financial resources are limiting factors of the PA. Farmers are benefiting from the PA.</p>	<p><b>ENVIRONMENTAL</b></p> <p>The site is home to rare endemic species of flora and fauna. The site is also one of the few tropical pine reserves in the country</p>
--	---	--	--	--	---



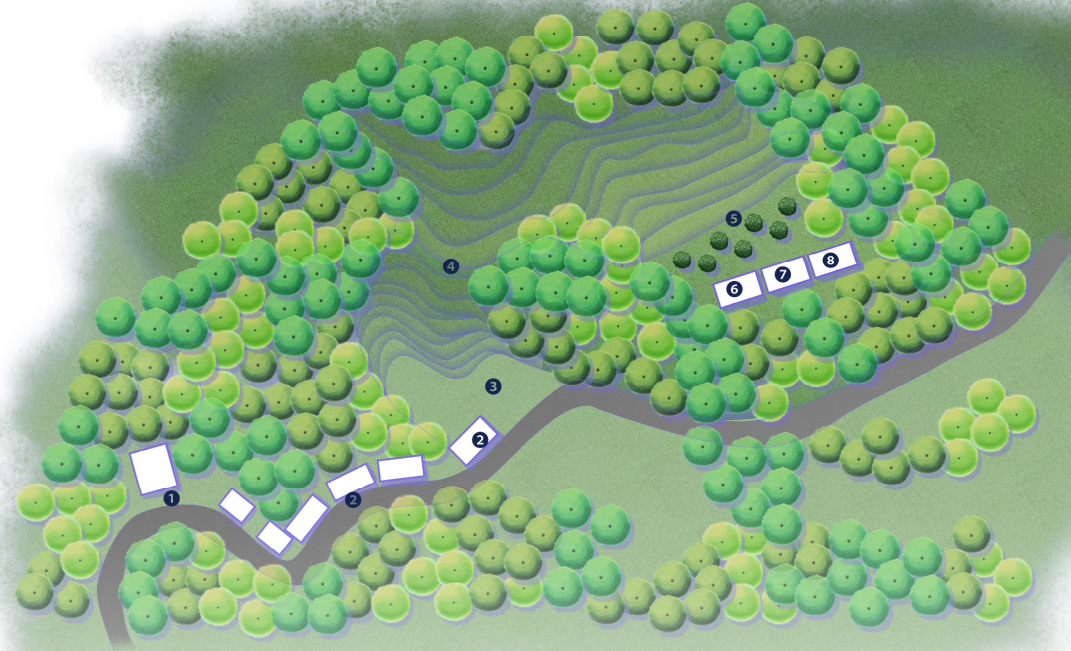
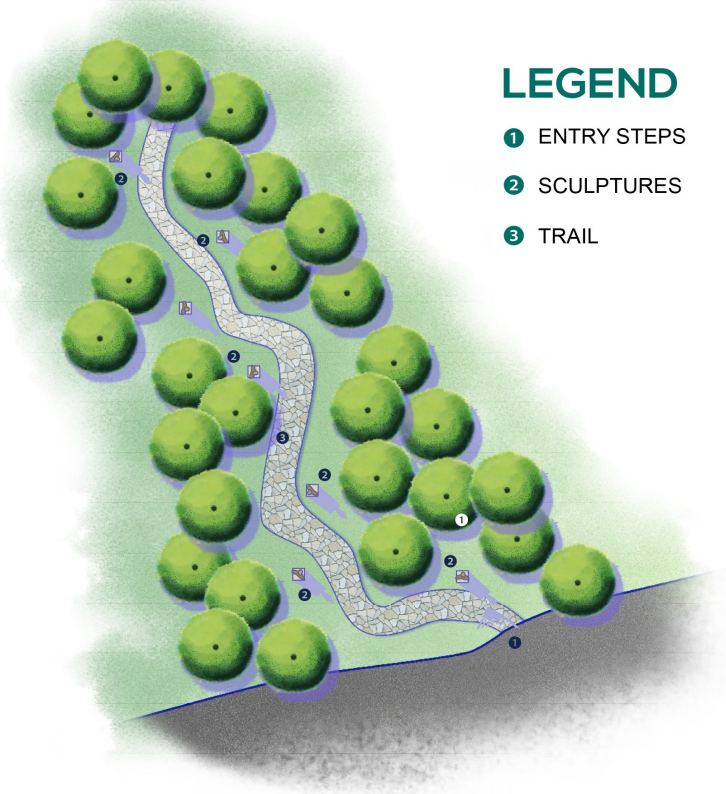
KEY PLAN  
SCALE 1:50000 MTS.

### LEGEND

- 1 VIEW DECK AND RESTAURANT
- 5 COFFEE PLANTS
- 2 SHOPS AND RESIDENTIAL UNITS
- 6 GAZEEBO
- 3 ENTRY
- 7 PROCESSING FACILITY
- 4 TERRACED PLANTING
- 8 MATERIALS RECOVERY FACILITY

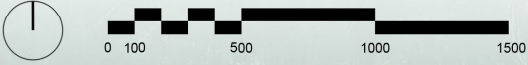
### LEGEND

- 1 ENTRY STEPS
- 2 SCULPTURES
- 3 TRAIL



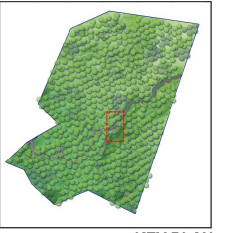
SDP-02 OF SDP-04  
**SDP-02** BPNML NATURE AND SCULPTURE TRAIL  
**SITE DEVELOPMENT PLAN**  
SCALE 15000 MTS.

SDP-03 OF SDP-04  
**SDP-03** AGRICULTURAL PARK  
**SITE DEVELOPMENT PLAN**  
SCALE 1:600 MTS.



## PROJECT CRUSADE

COMMUNITY-DRIVEN REVITALIZATION OF THE BESSANG PASS NATURAL MONUMENT/LANDMARK (BPNML) USING SUSTAINABLE AGRO-ECO TOURISM DEVELOPMENT



KEY PLAN  
SCALE 1:50000 MTS.



## LEGEND

- 1 SHOPS AND VIEW DECK
- 2 COMFORT ROOM
- 3 MATERIALS RECOVERY FACILITY
- 4 ENTRANCE
- 5 LAWN AREA
- 6 GAZEEBO
- 7 EXTENDED VIEW DECK
- 8 MONUMENT
- 9 RAMP
- 10 HISTORICAL MUSEUM
- 11 SOLAR PANEL SYSTEM
- 12 STAIRS
- 13 ECOLOGE
- 14 RAILING
- 15 PAMP OFFICE

SDP-04 BPNML PARK GROUNDS  
**SITE DEVELOPMENT PLAN**  
SDP-04 OF SDP-04 SCALE 1:600 MTS.



# PROJECT CRUSADE

COMMUNITY-DRIVEN REVITALIZATION OF THE BESSANG PASS NATURAL MONUMENT/LANDMARK (BPNML) USING SUSTAINABLE AGRO-ECO TOURISM DEVELOPMENT