

## PROJECT INTRODUCTION

Are you dulled by your environment? Do you feel like you're too busy and you just want to relax? Well, the Petalo Project is designed for people like you! The Petalo Project is a wonderful community park designed to satisfy the recreational aspect of the people and to appeal to the people's interests based on the picturesque site that our team has developed. It is filled with different areas that please your eyes with aesthetics of landscape and areas that you can bond and rest in with your family, friends, and peers.

## DESIGN CONCEPT

The project Petalo is a community park that has a curvilinear layout that boasts a colorful and mesmerizing environment as you become surrounded by nature. People of all ages can enjoy and relax in the park as its main function is to be the heart of the neighborhood. The design emphasized the accessibility of one space to another and to be one with nature at any part of the park. Mimicking the shape of a flower and integrating it into the pavilion in which rose as the central attraction of the site. The park is also surrounded by native trees and flowers, as well as common tropical plants and flowers.

## DESIGN PHILOSOPHY

"We borrow from nature the space upon which we build." - Tadao Ando

## SITE DETAILS

The chosen site for this project is a lot measuring 40 meters by 90 meters (3,600 square meters), located in Geneva Gardens Subdivision, in Novaliches, Quezon City.

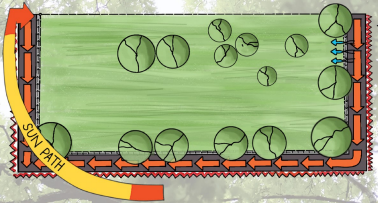
Observations in the current lot include it being open and rectangular in shape. A variety of tree species can also be seen at the lot's corners, as well as wide grass in the area. Since the lot is within a private residential village, the firm saw an opportunity to create a public space that will cater to their personal and social needs.



PROJECT 'PETALO' SITE DEVT. PLAN  
SCALE 1:200 MTS.



# PROJECT PETALO

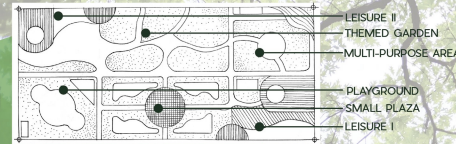


The site inventory and analysis comes from the view from Google Earth, Google Map, and Google Streets. In summary, the site is located in a private residential neighborhood which makes it a good location to design the park. The site also has existing trees which we kept to provide shade and aesthetics. The elevation of the land is also relatively flat but the lawn is unkempt and a lot of wild grass is present in the area, so it is best to treat this.

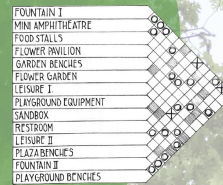
## SOFTSCAPE & HARDSCAPE PALETTE



## FORM COMPOSITION



## PROXIMITY MATRIX

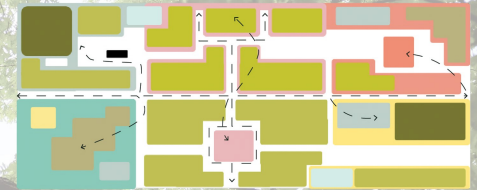


## THEORETICAL & CONCEPTUAL FRAMEWORK

The theory applied in Project Petalo is Place-making Theory, for this project provides active-ness, usefulness, interactivity, and being neighborly.



Project Petalo is active as it provides different activities for the community just like the playground area and multi-purpose area. It is useful as it features areas for relaxation and gatherings. Then, it is neighborly as it is in the heart of a private village that can cater the community itself. Lastly, it is interactive as it is planned to be the center of the community to connect and socialize with one another.



DIAGRAM

## KALINAW

### The Themed Garden



'KALINAW' SITE DEVT. PLAN  
SCALE 1:200 MTS.

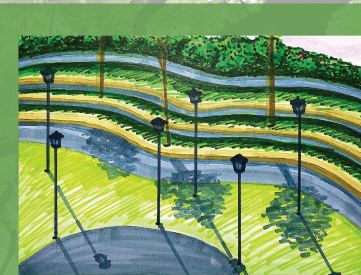


The themed garden also known as "Kalinaw", contains various plants which are native or common in the Philippines. Once the users walk into the area, they would be greeted with medium to tall-sized trees, like dita and several Manila Palm trees beside the benches. The main attraction is the flowers, specifically the Poinsettia, Blue Plumbago, Jasmine, and Golden Thryallis. These flowers resemble the Philippine flag in its colors positioned in different areas of the themed garden. In addition, the use of a leaf-shaped polycarbonate roof helps the users with some shade while navigating through the garden. The users may relax and enjoy the view from all the trees surrounding the garden and three grouped flowers. The feeling you would get just by walking below the roofed pathway added by the beauty of nature makes you appreciate a simple walking or seating in Kalinaw.

## SISIDLAN:

### The Multi-purpose Area

The mini amphitheater has a total area of 503 sq. m which contains step seating, restroom and utilities, and a multipurpose area at the center. The step seating is made of WPC and has planting boxes at the edges. Trees were scattered throughout the area even on step seating to provide a cooler temperature. Additionally, there are three restrooms which are provided for male, female, and PWD and a utility room of the park.

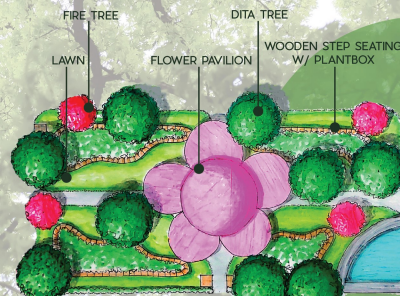


'SISIDLAN' SITE DEVT. PLAN  
SCALE 1:200 MTS.

## MARILAG:

### The Small Plaza

The small plaza is a 20x40 land with a purpose of relaxation, viewing, and walking. The small plaza contains 4 areas of elevated grass slopes filled with wooden step seatings with plant boxes within them. In the center of the area, a rounded platform surrounded by water with a flower pavilion is the focal point of the plaza and has a good top view. Its primary purpose is to let people relax by the wooden step seatings, but other uses for the area is sightseeing towards the themed garden and a pathway that people can go through to get to the different areas of the site.



'MARILAG' SITE DEVT. PLAN  
SCALE 1:200 MTS.

## IBO:

### The Playground



'IBO' SITE DEVT. PLAN  
SCALE 1:200 MTS.



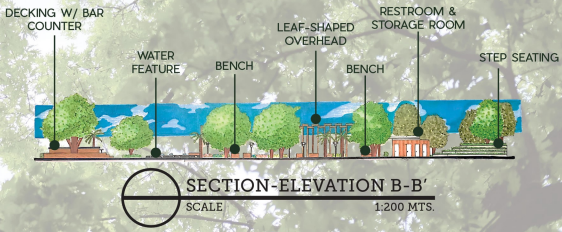
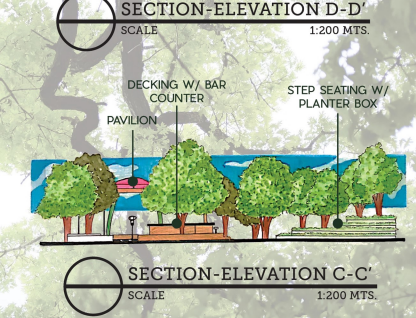
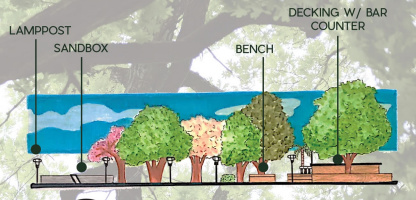
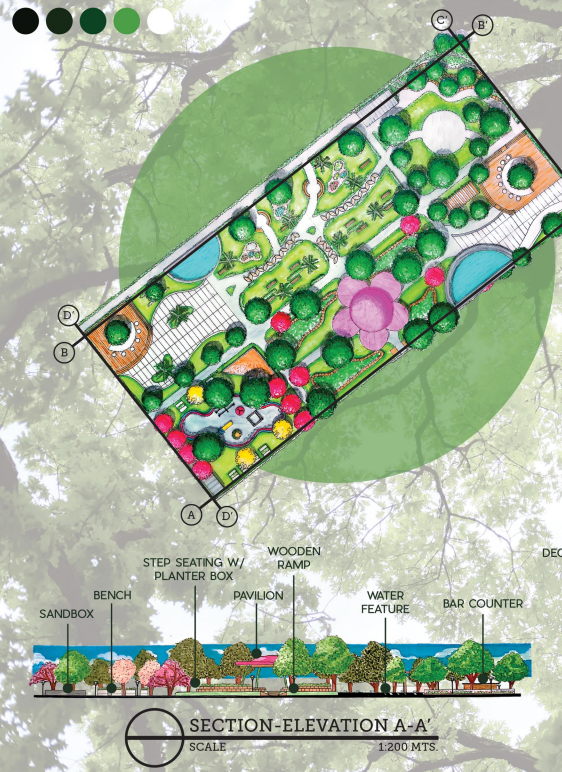
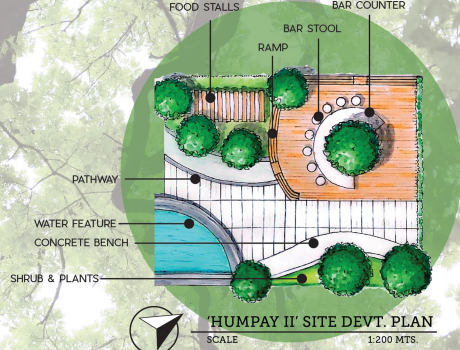
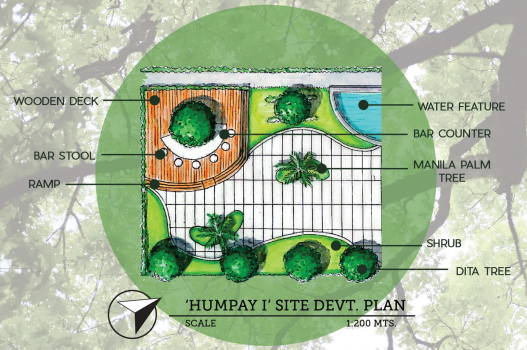
The playground acts as a kid-friendly and lively space at the community park, where children can play and socialize safely. It is distinguished by its vibrant colors, which are intended to draw children to the play area. Moreover, the swing set, seesaw, slide, monkey bars, and carousel roundabout, among other features in this area, provide a variety of activities for kids to improve their physical skills while having fun.



The leisure areas located on the opposite ends of the community park serves as a social hub for the users. Food stalls with delectable foods are accessible in the area, and diners may enjoy al fresco dining at a bar counter built in the wooden decking. Conversely, the long curvilinear seating provides a space for people to rest and chat under the shaded area. The people of the community can walk their pets in this area of the park since this area has a good walkability area.

# HUMPAY

## The Leisure Space



## THE SKETCH MODEL:

