

NORTHWEST PANAY PENINSULA NATURAL PARK

BEYOND THE BLUES

One of Panay Island's two terrestrial protected areas is the Northwest Panay Peninsula Natural Park (NPPNP). NPPNP is located in the northern-west corner of the island of Panay, with a total land area of 12,009.29 hectares. Its territory is divided between the municipalities of Libertad, Pandan, Buruanga, Malay, and Nabas. The first two are in the province of Antique, while the last three are in the province of Aklan. The rich biodiversity that this protected area supports emphasizes its ecological significance. The Greater Negros-Panay Biogeographic Region includes NPPNP. It is a recognized Important Bird Area (IBA) as well as one of the region's Key Biodiversity Areas (KBAs).



SITE DEVELOPMENT PLAN

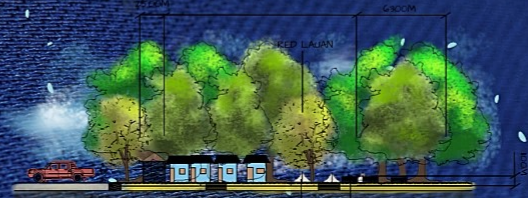
DESIGN CONCEPT:

Panay has always been known with its breathtaking white sand beaches, especially the world famous Boracay Island. The idea of Beyond the Blues aims to give attention to the landscape that gives the blue water of Boracay. It's called beyond, instead of behind, for its promising environment that suits as another ecotourism of Panay.

DESIGN PHILOSOPHY:

From the Environmental Determinism Theory approach which Environment, especially its physical factors such flora and fauna, determines the pattern for human culture and societal development.

"Ecology and spirituality are fundamentally connected, with deep ecological consciousness, ultimately, spiritual awareness"



softscape palette



hardscape palette



MATERIALS LEGEND:

- A. INTERLOCKING UNIT PAVERS
- A.1 40MM THK. PATTERN KEYHOLE, SET ON CONCRETE BED, COLOR YELLOW
- A.2 40MM THK. PATTERN KEYHOLE, SET ON CONCRETE BED, COLOR RED
- B. CONCRETE
- D.1 100X100X100MM THK. PRECAST CONCRETE BLOCK, COLOR GREY, FINISH: EXPOSED GRAVELTA AGGREGATE
- D.2 CONCRETE DRIVEWAY REINFORCED, 150 MM THK. STANDARD FINISH, 300 PSI, COLOR PLAIN
- D.3 100X100X100MM THK. PRECAST CONCRETE BLOCK, COLOR GREY, FINISH: BROOM FRESH
- C. METALWORKS
- F.1 304/316 SUS. FABRICATED STAINLESS STEEL, 150 MM THK. COLOR RED, PAINTED ACRYLIC, FINISH COATED WITH ANTI-RUST COATING VARNISH
- B.2 BAMB. NUTS AND BAMBOO
- O.1 SEE STRUCTURALS AND DETAILS DESIGN FOR MATERIALS SPECIFICATIONS, NPA HUTS AND SANITARY FOR DESIGN TO SUPPORTIVE
- E. ROOFING
- J.1 1.5" BUBBLED AND FIBER CEMENT TILE ROOFING, 300X300X10MM THK. COLOR BRIGHT RED, FOR STAINING, SEE STRUCTURALS DETAILS FOR INSTALLATION
- O.2 LEAVY
- L1 FROD GRASS; COMPRESUS ANONOPUS L2 CANABAO GRASS; PASPALUM CONJUGATUM, 300MM ALLOWABLE HEIGHT BEFORE TRIMMING

NORTHWEST PANAY PENINSULA NATURAL PARK

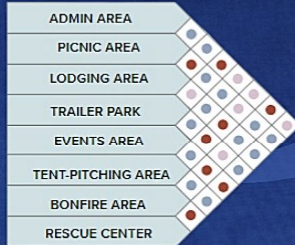
BEYOND THE BLUES



Strength	Weaknesses
<ul style="list-style-type: none"> -the area has a high value of biodiversity -has many unutilized zones where water meets the land -play an important role as watershed, in climate control and as protection against erosion and landslides 	<ul style="list-style-type: none"> -garbage from the incoming tides, beach-goers and the daily activities of the people who live and work in the area litters on the beach sand -converted agricultural land
Opportunities	Threats
<ul style="list-style-type: none"> -Diverse topography -ecotourism industry for the locals 	<ul style="list-style-type: none"> -mining, illegal logging, and poaching -Hydropower project (may become a "door" for further intrusions inside the protected area proposed project would surely disrupt/destroy various endemic species of plants and animals)

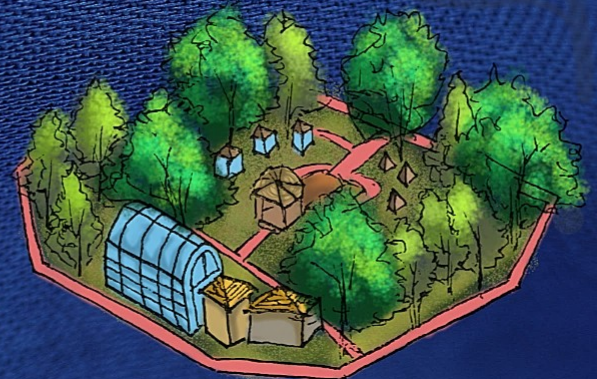
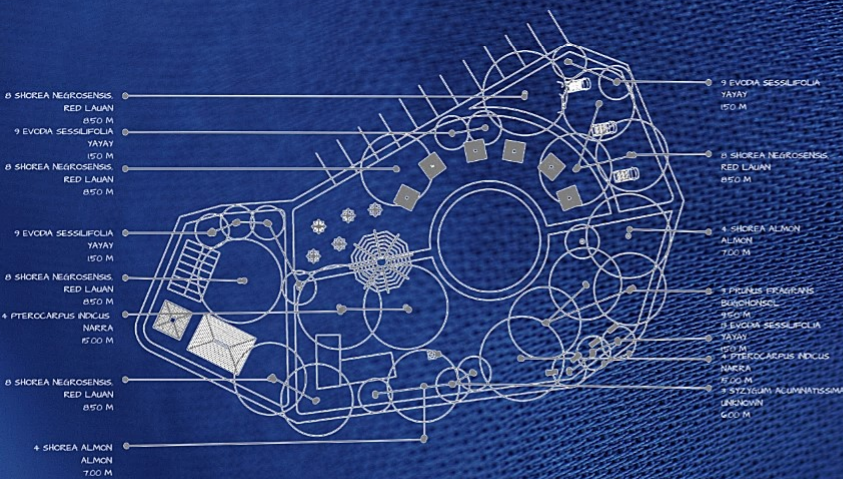
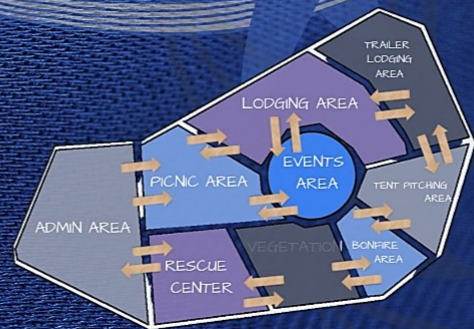
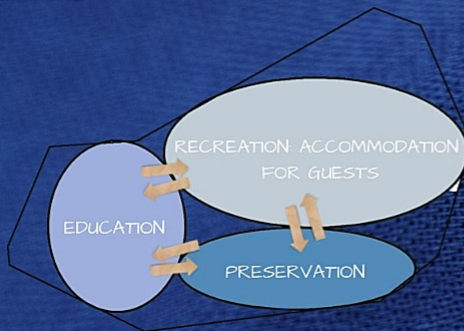
Political	Economic	Social
<ul style="list-style-type: none"> -Change against the inclusion of Northwest Panay Peninsula Natural Park to A Hydropower Project in Malay, Adm. Established by former President Proclamation no. 145 dated April 24, 2002 issued by Gloria Macapagal Arroyo -Hydropower project (may become a "door" for further intrusions inside the protected area proposed project would surely disrupt/destroy various endemic species of plants and animals) 	<ul style="list-style-type: none"> -recent prohibition of mining, illegal logging, and poaching -in-labour projects such as hydro gas and biomass crops, making where the main capital was retained by the government -using economies on the middle zone -Offering nature tours through the NW Panay Peninsula and visit marinating in Subana Municipality, the emergence benefits the local stakeholders by supplying them in guides, porters and other field personnel. 	<ul style="list-style-type: none"> -drills by JICA and Thailand enter - since the 1970s, the ACP people were eventually pushed to an already small parcel of land on which they were allowed to continue practicing their traditional industry -Locals are lured by DENR to plant to avoid covering forest and their agricultural land
Technological	Legal	Environmental
<ul style="list-style-type: none"> -Animal Rescue Center -Wild Farm escape project in the town of Malay, Iloilo City and Boracay Island. The site lies along the coastline with elevations between 110m and 300m and has excellent view resources. -Establishing Research and Education (The focus of research is the conservation of endangered species to ensure their occurrence in the wild. Also, educate children in schools and show them the threatened biodiversity of Panay's reserves). 	<ul style="list-style-type: none"> -Subdivision initiated by Public (PHILIPPINE INTERACTIVE FOR ENVIRONMENTAL CONSERVATION) -Forest Ranger -Quarrying of Sand -LCA and the Provincial Government and PhilaCo's facilitation of the NW Panay Biodiversity Management Council 	<ul style="list-style-type: none"> -play an important role as watershed, in climate control and as protection against erosion and landslides -the area has a high value of biodiversity -Same to countless endangered species, endemic tree and plant, and water channels that supply over 100,000 people with fresh resources -garbage collected from the incoming tides, beach-goers and the daily activities of the people who live and work in the area -has many unutilized zones where water meets the land -Large area act as corridors for many "Hotspot" with Diversity, provides more of Boracay

Proximity Matrix



DESIGN CONCEPT:

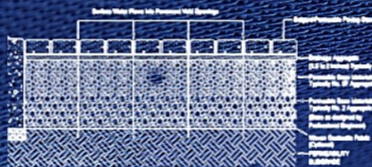
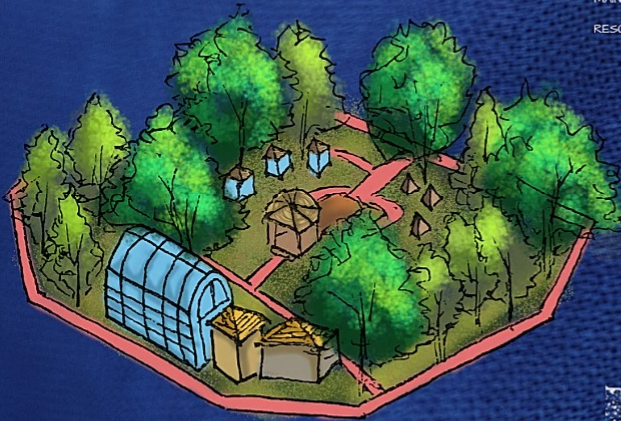
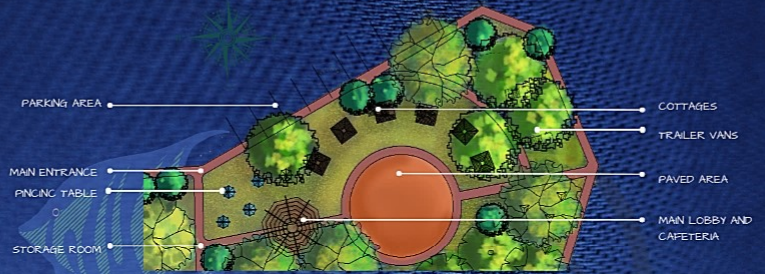
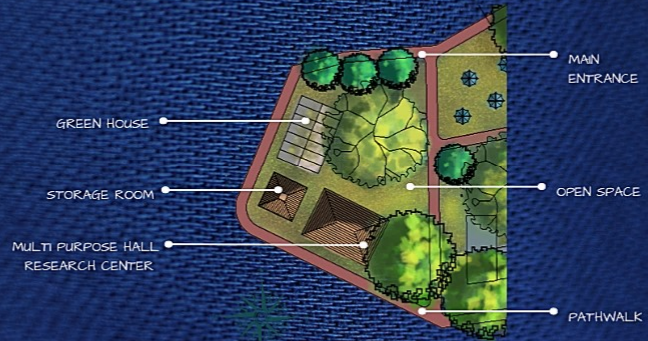
Panay has always been known with its breathtaking white sand beaches, especially the world famous Boracay Island. The idea of Beyond the Blues aims to give attention to the landscape that gives the blue water of Boracay. It's called beyond, instead of behind for its promising environment that suits as another ecotourism of Panay.



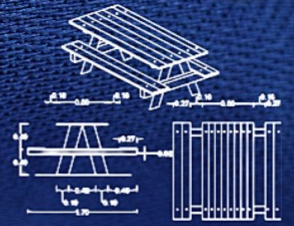
QUANTITY	SCIENTIFIC NAME	COMMON NAME	SPACING	PLANTING HEIGHT	REMARKS
8	Shorea negrosensis	Red Lauan	As shown	7.50 M	Evergreen
9	Evodia sessilifolia	Yayay	As shown	1.50 M	Perennial
4	Shorea almon	Almon	As shown	7.00 M	Evergreen
3	Syzygium acuminatissima	As is	As shown	6.00 M	Evergreen
3	Prunus fragrans	Bugohonsol	As shown	9.50 M	Evergreen
4	Pterocarpus indicus	Narra	As shown	15.00 M	Evergreen

NORTHWEST PANAY PENINSULA NATURAL PARK

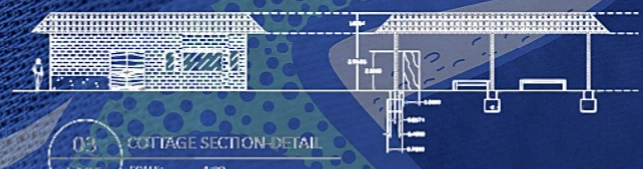
BEYOND THE BLUES



01 PAVING SECTION-DETAIL
LAD5 SCALE: 1:80



02 PICNIC BENCH SECTION-DETAIL
LAD5 SCALE: 1:20



03 COTTAGE SECTION-DETAIL
LAD5 SCALE: 1:20