



SALOG NIN PAGTUBOD

NAGA RIVER REHABILITATION IN RELATION TO PROMOTING HERITAGE CONSERVATION IN NAGA CITY, CAMARINES SUR

ARVIN D. ATOLE
Bachelor of Landscape Architecture
adatole@up.edu.ph | arvin atole

Environmental Landscapes Studio Laboratory,
College of Architecture, University of the Philippines

Asst. Prof. José Dan Villa Juan
LA200 Thesis Adviser

ABSTRACT

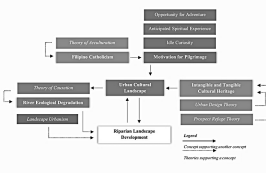
Visible pilgrimage elements are the physical manifestation and meaningful association people make to their landscapes. Hence, people's lack of awareness and underappreciation for a pilgrimage landscape determines the necessity of preservation actions in the vicinity. The same fate exists in the Naga River, a major river that crosses the center of Naga City, Camarines Sur. The city's history flourished from founding a riverside community to becoming the Pilgrim City and the Queen City of Bicol. One of its most prestigious religious ceremonies is the Peñafrancia Fluvial Procession. True to the title of the research, "Salog nin Pagtubod," which translates as "river of faith." The study aimed to create a riparian landscape design that incorporates the Naga River's present cultural landscape with its associated tangible and intangible cultural heritage.

The method is employed with a Descriptive Research Strategy, which consists of two parts: understanding the cultural landscape and the design development. Naga River's cultural landscape assessment has undergone four data collection: online survey, cultural mapping, cross-examination with another pilgrimage site, and site inventory. The result showed that the motivation of Ina's devotees is mainly to gain personal growth and advancement. It showed that spacious and strengthened spaces for viewing along the riverbank are a factor in their attendance in the pilgrimage activity. The place attachment of respondents to the Naga River showed that the landscape with the most substantial connection with place affect, dependence, and identity is the riverwalk on a higher platform. Concerning Ina Devotees' Attitude towards the Naga River Rehabilitation, they felt strongly about the importance of the process due to its historical and religious interests and improvements in the environment. Most of the concerns and aspirations of the devotees revolve around safety, maintenance, awareness, and accessibility. Aside from the survey results, the paper found additional tangible cultural properties associated with the fluvial procession, a well-known intangible cultural property.

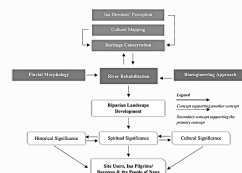
The assessment, obtained from understanding the river's cultural landscape, assisted in developing a master site development plan. It integrated heritage conservation, including accessibility for devotees to travel from one tangible cultural property. Most importantly, the Daungan ni Ina, one of the identified tangible cultural properties, and its surrounding area were subjected to improvement through a Landscape Architectural design. The conservation of the site's heritage characteristics and attributes implied preventing the river's heritage deterioration over time.

THESIS FRAMEWORKS

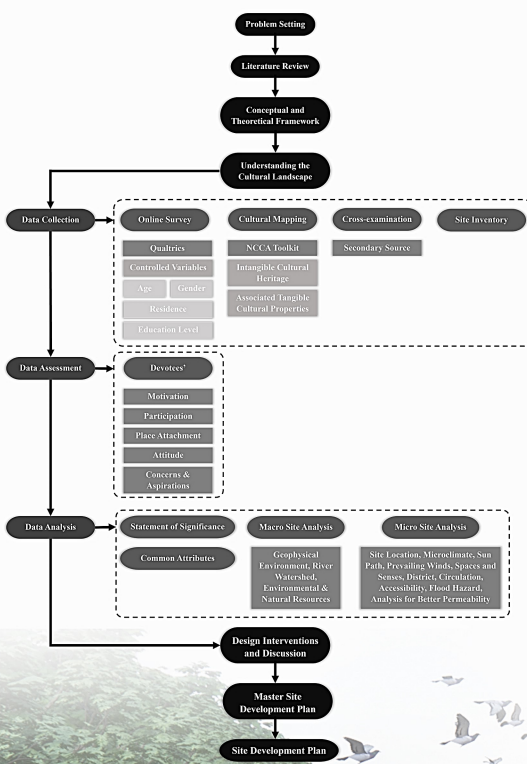
THEORETICAL FRAMEWORK



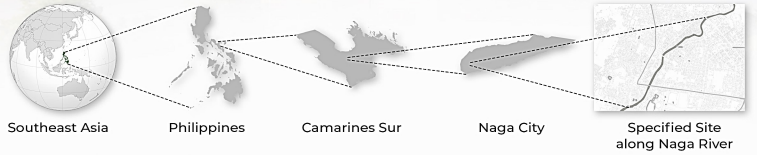
CONCEPTUAL FRAMEWORK



METHODOLOGICAL FRAMEWORK

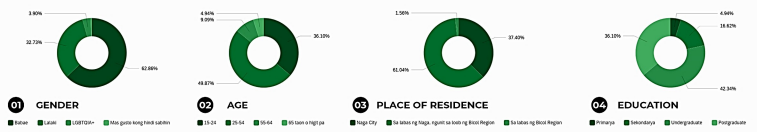


SITE LOCATION

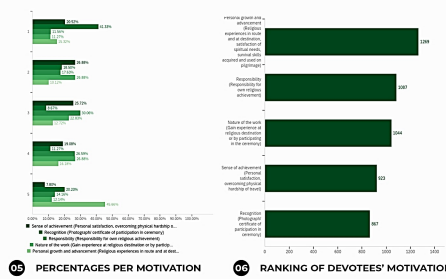


QUALTRICS SURVEY RESULTS

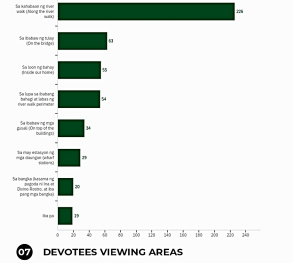
A | DEMOGRAPHIC INFORMATION OF DEVOTEE RESPONDENTS



B | DEVOTEES' MOTIVATION FOR PILGRIMAGE



C | DEVOTEES' PARTICIPATION DURING FLUVIAL PROCESSION



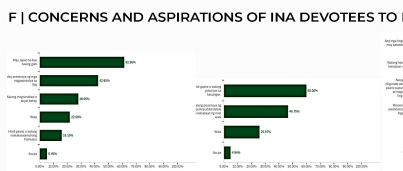
D | RESPONDENTS' PLACE ATTACHMENT WITH NAGA RIVER

Statements (Quotations)	Mean	Standard Deviation	Interpretation
Alluvial Soil Past the Riverwalk The landscape makes me feel secure to attend the celebration. (Place Affect)	3.34	1.3	Neither agree nor disagree
The landscape provides me the space in viewing the fluvial procession. (Place Dependence)	3.31	1.25	Neither agree nor disagree
I feel connected to the landscape. (Place Identity)	3.65	1.18	Somewhat agree
Riverwalk (lower area) The landscape makes me feel secure to attend the celebration. (Place Affect)	3.64	1.17	Somewhat agree
The landscape provides me the space in viewing the fluvial procession. (Place Dependence)	3.35	1.28	Neither agree nor disagree
I feel connected to the landscape. (Place Identity)	3.75	1.11	Somewhat agree
Riverwalk (high area) The landscape makes me feel secure to attend the celebration. (Place Affect)	3.7	1.22	Somewhat agree
The landscape provides me the space in viewing the fluvial procession. (Place Dependence)	3.56	1.16	Somewhat agree
I feel connected to the landscape. (Place Identity)	3.81	1.08	Somewhat agree
On the Bridge The landscape makes me feel secure to attend the celebration. (Place Affect)	3.39	1.25	Neither agree nor disagree
The landscape provides me the space in viewing the fluvial procession. (Place Dependence)	3.39	1.22	Neither agree nor disagree
I feel connected to the landscape. (Place Identity)	3.72	1.15	Somewhat agree
Wharf Station The landscape makes me feel secure to attend the celebration. (Place Affect)	3.57	1.19	Somewhat agree
The landscape provides me the space in viewing the fluvial procession. (Place Dependence)	3.4	1.22	Neither agree nor disagree
I feel connected to the landscape. (Place Identity)	3.71	1.08	Somewhat agree

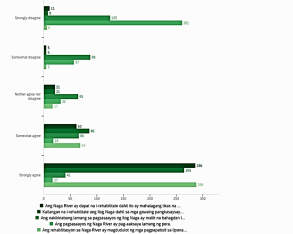
E | DEVOTEES' ATTITUDE TOWARDS NAGA RIVER REHABILITATION

Statements	Mean	Standard Deviation	Interpretation
The Naga River should be rehabilitated as it is an important natural resource	4.58	0.88	Strongly Agree
The Naga River needs to be rehabilitated because of its historical and religious interests.	4.55	0.83	Strongly Agree
The only beneficiaries of the Naga River rehabilitation are only a small percentage of the population.	2.51	1.37	Somewhat Disagree
Rehabilitating the Naga River is just a waste of money.	1.63	1.10	Strongly Disagree
Rehabilitation on the Naga River will bring about social and environmental improvements.	4.63	0.77	Strongly Agree

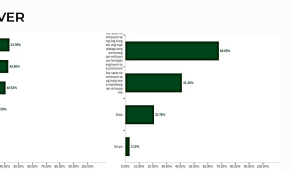
9B | SUMMARY OF DEVOTEES' PLACE ATTACHMENT WITH NAGA RIVER



9C | SUMMARY OF ATTITUDE INTERPRETATION



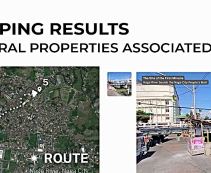
10 | SUMMARY OF ATTITUDE CHOICE COUNT



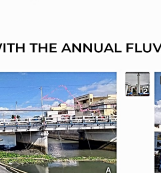
11 | SAFETY CONDITIONS



12 | MAINTENANCE CONDITIONS



13 | ACCESS CONDITIONS

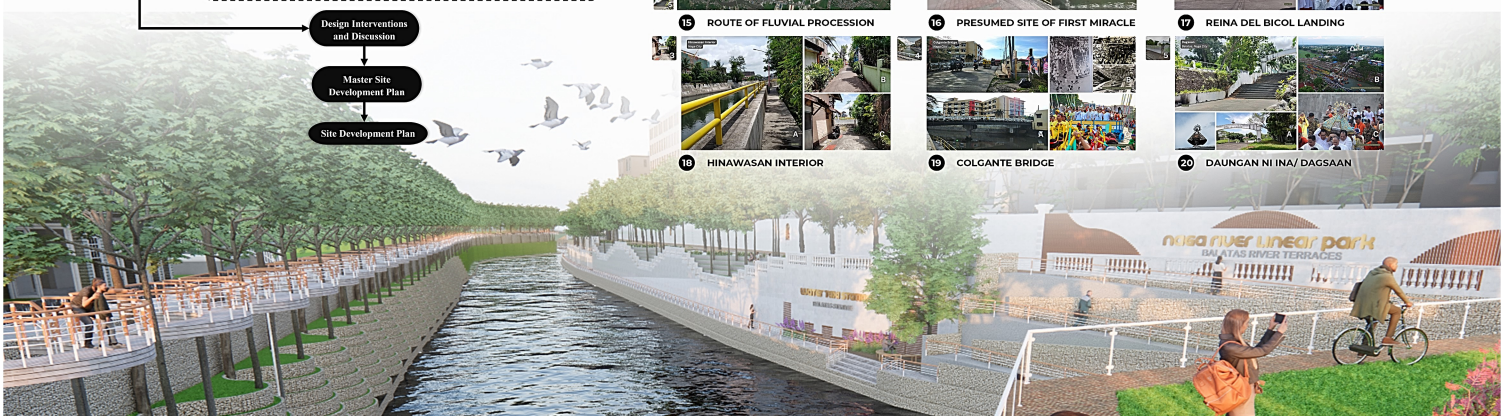


14 | AWARENESS CONDITIONS

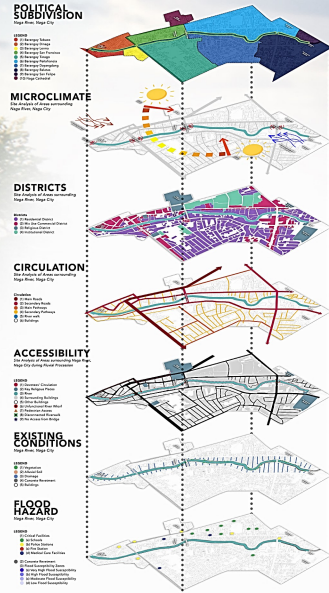


CULTURAL MAPPING RESULTS

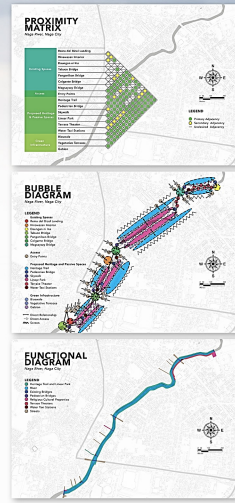
A | TANGIBLE CULTURAL PROPERTIES ASSOCIATED WITH THE ANNUAL FLUVIAL PROCESSION



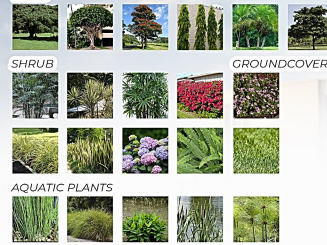
ANALYSIS
MICRO SITE ANALYSIS



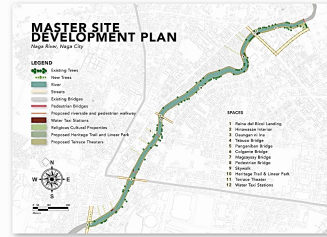
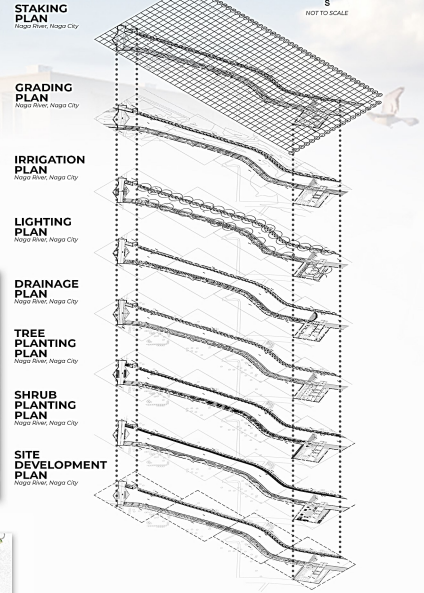
SYNTHESIS
DESIGN DEVELOPMENT



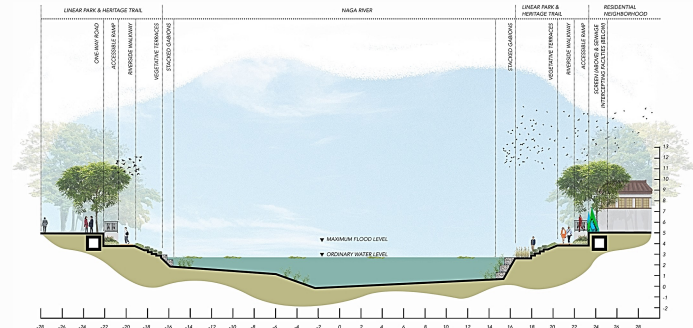
PLANT PALETTE



CONSTRUCTION DRAWINGS



PROPOSED HERITAGE ELEMENTS



DESIGN VISUALIZATION

