

BELTON PARK



A COMMUNAL SPACE FOR HOLISTIC DEVELOPMENT

PROJECT INFO/NAME
 Belton Park is part of the North Belton Residences, (a residential space located in the busy district 6 of Quezon City, Philippines). It is a communal space for holistic development where it allows people to gather and connect with nature within a fast-paced commercial city. The objective of this project is to provide people with a haven that boasts their overall well-being as they traverse through the landscape. Analysis of the condition of the site and proper planning and design of the community park were carefully considered.

DESIGN CONCEPT
 Relaxation in Urban Living: Connecting People to Open Space
 The selected site is located near a hospital, a gym, and a highway – all of which are common high-stress places; thus, the objective of the park is to create a place that promotes serenity and connects users to an oasis within the city. The designers also aim to provide people with a communal space that promotes holistic well-being.

DESIGN PHILOSOPHIES
Sensory Stimulation Theory
 This theory states that learning can be enhanced by stimulating the five senses, especially the visual sense. Stimulation through the senses is achieved by exposure to a great variety of colors, varying volume levels, strong statements, visually presented facts, and a variety of techniques and media.

Symbolic Interactionism Theory
 This theory states that humans respond to elements of the environment based on the personal meanings that they associated with them. Such meanings are heavily influenced by interaction with other people, objects, events or ideas.

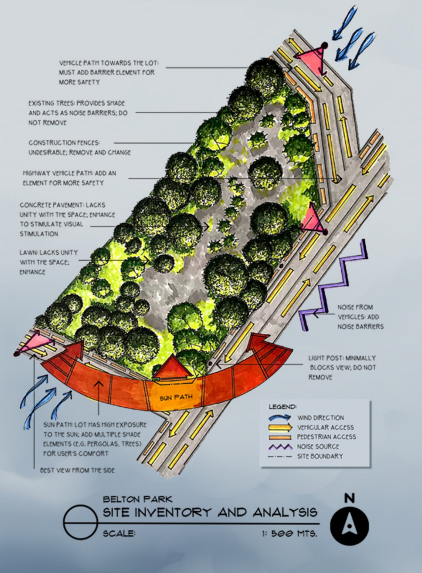
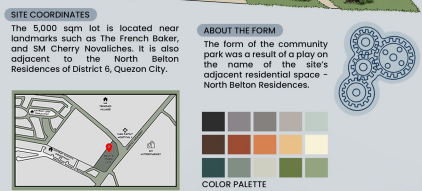
Biophilia Hypothesis
 This theory states that as human beings, we possess an innate tendency to seek and form a connection with nature and other forms of life.

SWOT ANALYSIS
Strengths
 - The lot is surrounded by many commercial businesses.
 - It is empty which means any modifications can be accommodated.
 - There are numerous trees and greenery throughout the property.

Weaknesses
 - A highway is adjacent to the lot; hence, there is constant noise from oncoming traffic.
 - The lot is a relatively large space which means construction and building materials would be expensive.

Opportunities
 - The site can be developed into a community park that provides people a green open space.
 - It can serve as a focal point in the busy district of Novaliches.
 - It can be a space for events, recreation (play areas), and relaxation (sensory landscapes).

Threats
 - Because the site is an open area, rainfall may prevent users from using the space during the rainy season.
 - Additionally, the summer months may be too hot and humid for users.

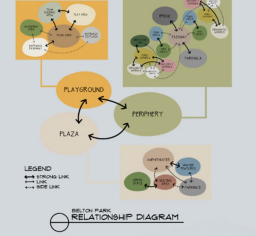


BELTON PARK

Form and Diagrams

RELATIONSHIP DIAGRAM

The relationship diagram illustrates the major and minor components of the park such as the plaza, the periphery, and the playground.



FUNCTIONAL DIAGRAM

The functional diagram presents a rough placement of the major spaces of the park. Here, we can also see the relationships and circulations between the spaces.

REFINED FUNCTIONAL DIAGRAM

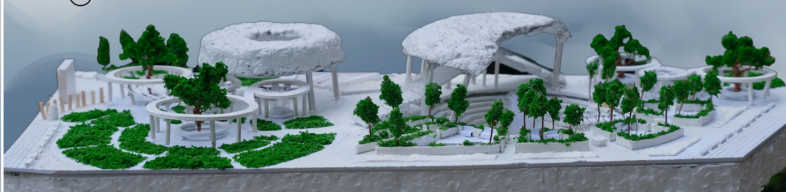
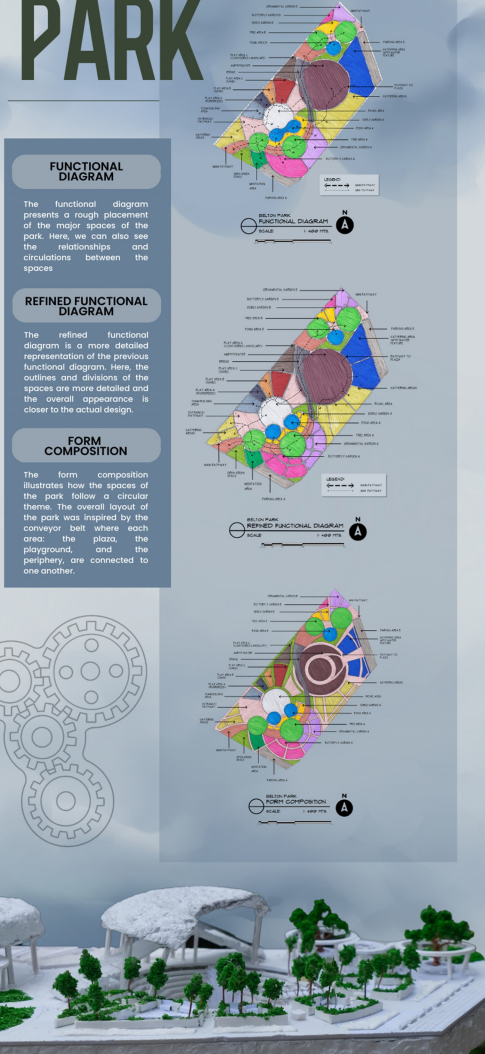
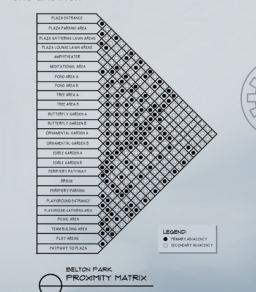
The refined functional diagram is a more detailed representation of the previous functional diagram. Here, the outlines and divisions of the spaces are more detailed and the overall appearance is closer to the actual design.

FORM COMPOSITION

The form composition illustrates how the spaces of the park follow a circular theme. The overall layout of the park was inspired by the conveyor belt where each part of the plaza, the playground, and the periphery, are connected to one another.

PROXIMITY MATRIX

The proximity matrix shows us the spatial relationships between the spaces of the park. Here we can see how distant the spaces of the park are from one another.



BELTON PARK

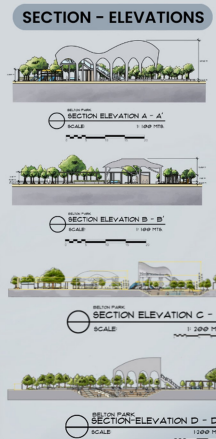
SECTIONS AND SITE DEVELOPMENT PLAN



SITE DEVELOPMENT PLAN

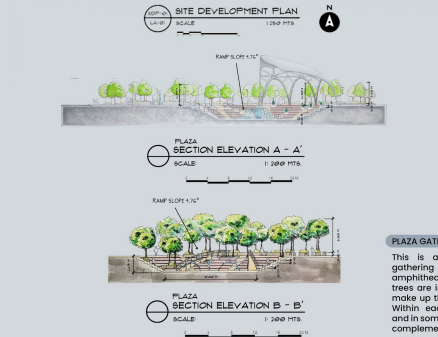
Belton Park is a residential community park that provides a communal space for holistic well-being. Amidst the fast-paced urban living, it is our hope that this park may connect people to open spaces, foster relationships, and bring them closer to nature. The objective of this project is to provide a haven wherein improved well-being can be achieved through traversing the landscape.

The SDP illustrates the entirety of the park. The design was based on the analysis of the site conditions. It encompasses a plaza, a periphery, and a playground.



PLAZA

The plaza is designed following the overall circular theme. The amphitheater is considered the main feature, closely related to the surrounding gathering areas, and on the east side of the plaza runs a parking space.



PERIPHERY

Staying true to the theme, the periphery displays circular pergolas surrounded by sensory gardens. A bridge runs across the park from Periphery Area A to Periphery Area B.

PERIPHERY POND AREA
The water feature uses glass as an enclosure. It functions as a small aquarium where children can enjoy watching and feeding the fish. The seating area is made of both wood and metal. The wooden planks for seating.



PERIPHERY TREE AREA
A large tree is placed at the center of the pergola to provide shade to users. It also contains a seating area underneath that provides users a space to relax and enjoy a view of the garden.



MEDITATION AREA
This is the meditational area. The water feature is a small wishing well that creates a serene and still atmosphere. A wooden, semi-private fence was erected for enclosure and privacy, and large trees were planted to provide a natural shade. In this area, sand, gravel, and greenery contribute to a variety of interesting textures.



PERIPHERY BRIDGE

This is the meditational area. The water feature is a small wishing well that creates a serene and still atmosphere. A wooden, semi-private fence was erected for enclosure and privacy, and large trees were planted to provide a natural shade. In this area, sand, gravel, and greenery contribute to a variety of interesting textures.



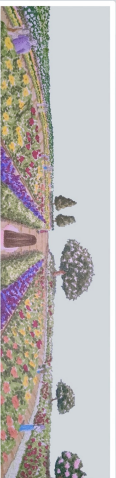
PERIPHERY PATHWAY PERGOLA

This is the shaded pathway that connects the pergolas. For the main structural frame, dark-colored steel was used, and for its accents, lighter-colored composite wood was used.



PERIPHERY GARDENS

Here are the sensory gardens of the plaza periphery which reflect various shades of vibrance. To the far left are the butterfly gardens; to the far right are the captivating fragrant ornamental gardens; and at the center are the edible gardens that consist of mouthwatering shades of reds and yellows.



PLAYGROUND

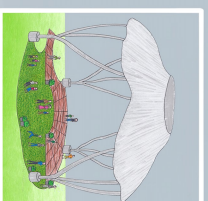
A circular picnic area serves as the main feature of the playground. It is surrounded by different play areas that accommodate a wide demographic. To the left are gathering areas similar to the plaza, and to the right is a pathway that leads directly to the plaza itself.



PICNIC AREA FLOOR PLAN
The picnic area floor plan illustrates the base plane of the picnic area. On one side, wood was used; and on the other, turf grass was used.

PLAYGROUND PICNIC AREA

The picnic area is covered almost completely by turf grass. The only exception is to match the roof of the picnic table. The base plane is covered by turf grass and wood to create texture, mitigate risk, and promote a sensory experience. In this area, parents and/or guardians may watch over their children from afar. It gives ample view of the entire playground area and thus, is optimally located for this purpose.



PLAYGROUND ACTIVITY TOWER

This is a children's activity tower with dynamic shapes and bright colors. Some of its important features include pocket spaces, climbing areas, a bridge, and multiple slides. Sand covers the base area for a softer landing.



PLAYGROUND ACTIVITY TOWER

Turf grass covers the landscape to reduce risks of injury and to prevent mud stains. The irregular contouring provides opportunities for a more creative and sensory experience, and even picnics if the weather permits.



LANDSCAPE ARCHITECTURE
SECTION ELEVATION A - A'
SCALE 1:100 FT/S



LANDSCAPE ARCHITECTURE
SECTION ELEVATION B - B'
SCALE 1:100 FT/S



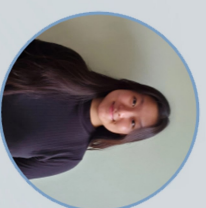
BOON
BoonDocks refer name representative designs and create



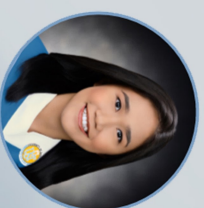
JACINTH FAYE
Jacinth Faye A. Calera is a former medical professional that advocates for environmental design and the local landscape.



GILLIAN REESE
An environmentalist aspires to shape the future. She hopes to use nature projects as a tool to promote the concept of aesthetic better formed in beautiful study B Landscape.



CHARLIZE TAT
Having an appreciation for nature, she is committed to creating a sustainable culture and sustainable biophilic designs for study B Landscape.



KORINNE MICA
Korinne Sotero is a first-year student in landscape architecture. She is interested in planning open spaces and playing sports in her art style as she studies.



PATRICIA MER
As an aspiring landscape architect, she has a deep understanding of the acquired knowledge and experience when designing a landscape benefit from.