

MINOYANGAN IBATAN

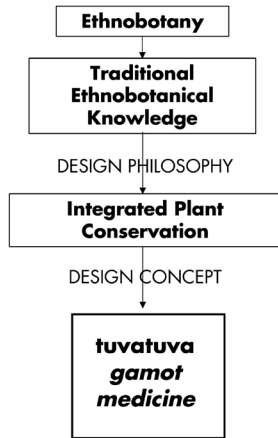
Batanes Botanical Garden and Arboretum

by Jose Boncan

"Flora to treat ailments can be found amidst the lush landscape of the Batanes islands, from rolling grassy hills, to montane forests."

CONCEPTUAL FRAMEWORK

THEORETICAL FRAMEWORK



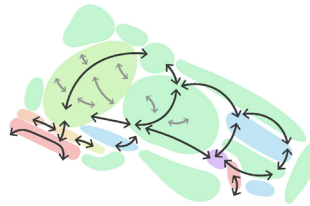
DESIGN TRANSLATION

Tuvatuva manifests itself in the landscape typologies present throughout the botanical garden and arboretum. Various plants of ethnobotanical importance from different biomes are present throughout.

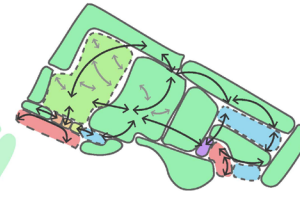
The journey to "find a cure" is thus repeated as one proceeds through the site, preserving traditional knowledge for years to come.

DESIGN PROGRAM

BUBBLE DIAGRAM



FUNCTIONAL DIAGRAM



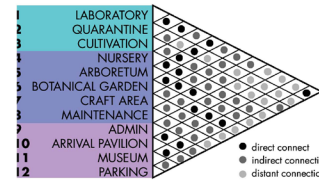
- arboretum
- botanical garden
- arrival area
- museum
- admin
- nursery/cultivation/quarantine
- lab
- parking

ZONING

The garden and arboretum are laid out in zones by **lowland grassland, highland grassland, and mountain forest**, based on the predominant biomes in Batanes.

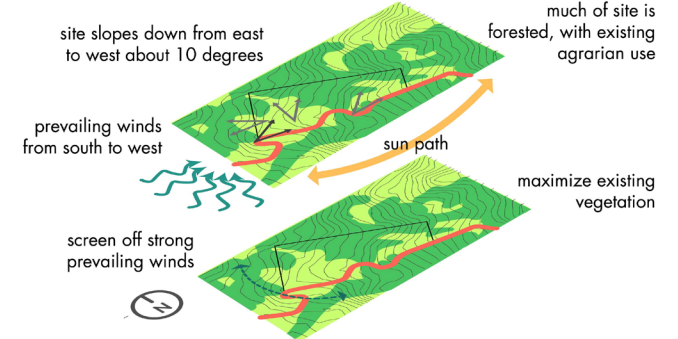


PROXIMITY MATRIX

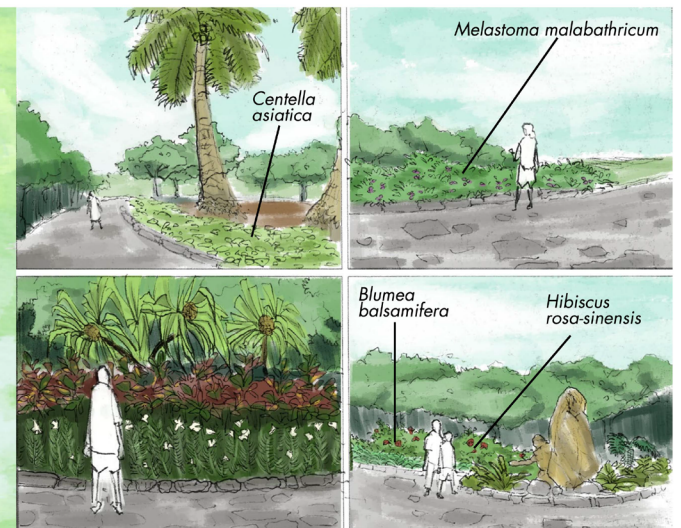


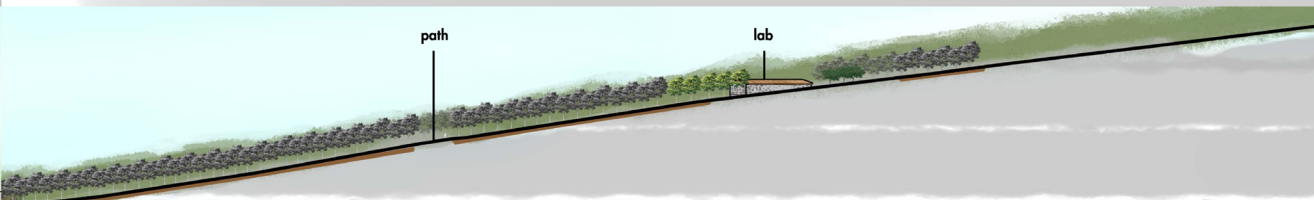
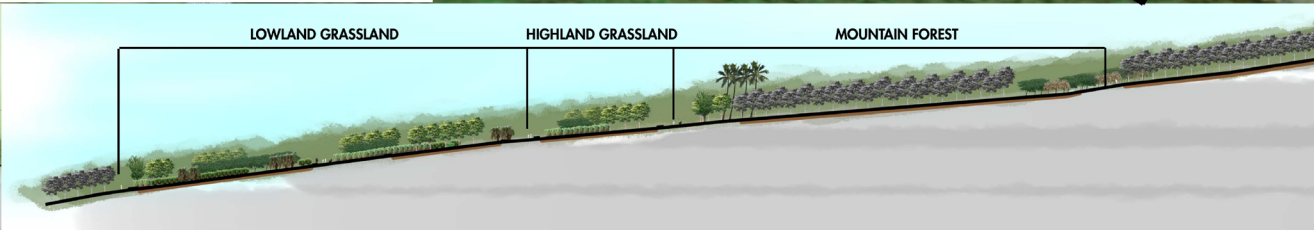
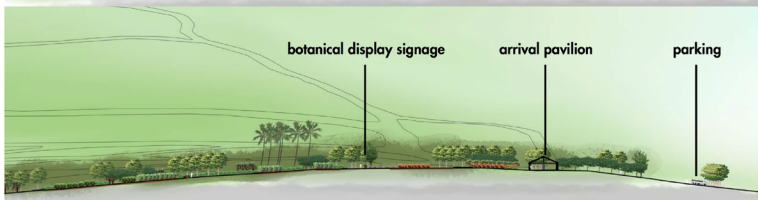
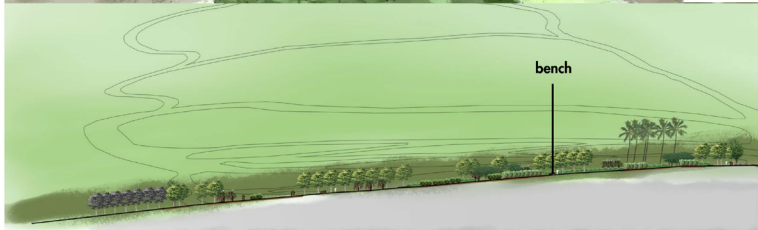
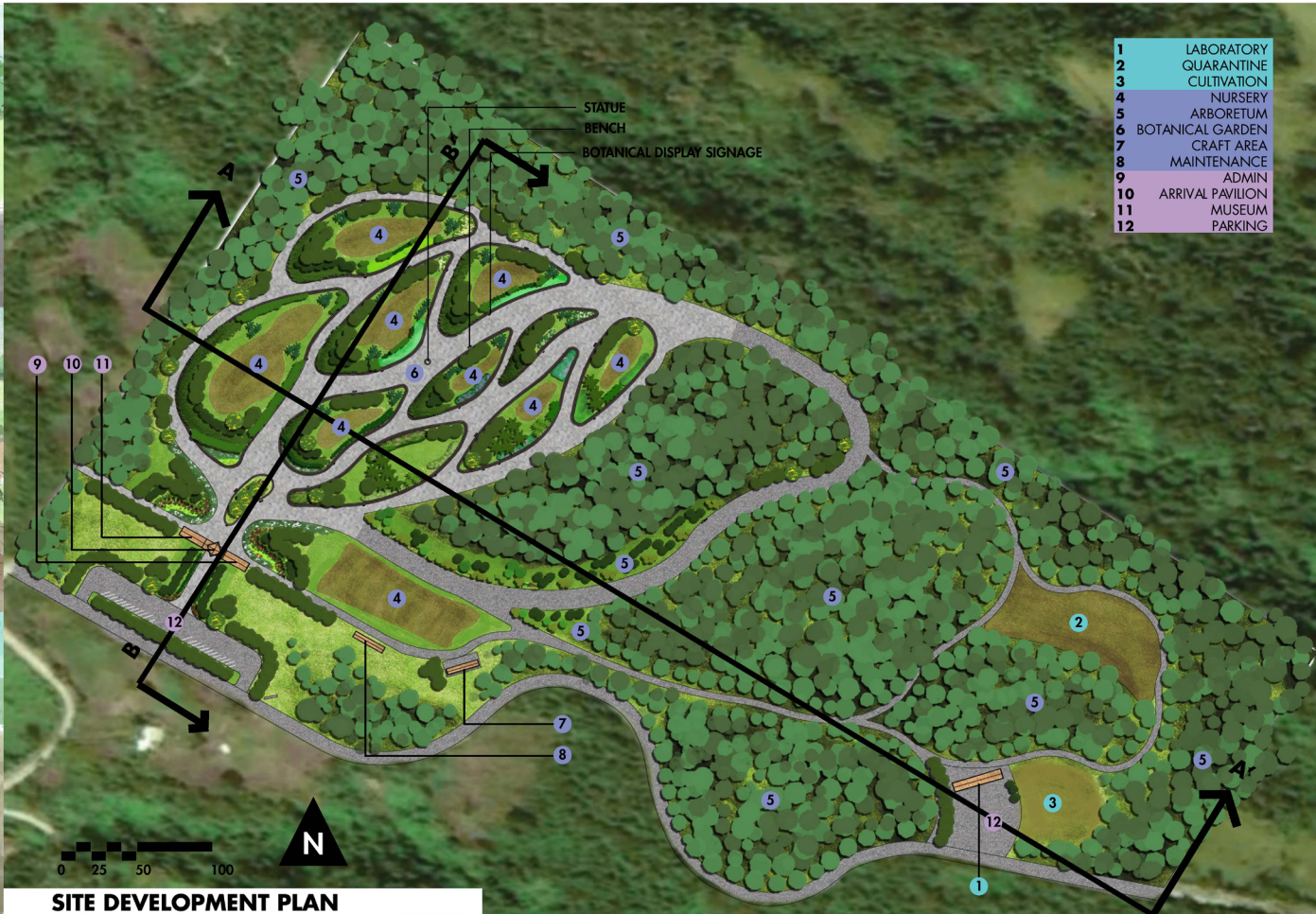
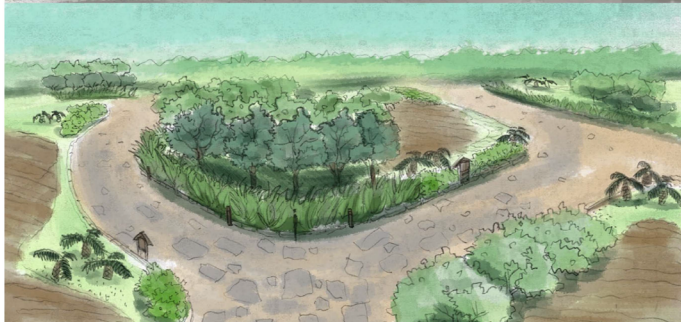
- lowland grassland
- highland grassland
- mountain forest

SITE INVENTORY & ANALYSIS



SELECTED PLANT PALETTE





SECTION-ELEVATION A-A'



SECTION-ELEVATION B-B'

