

# THE LIWANAG HUB

BONGALON, CHRISTIANNE CLARISSE B.

II - BS ARCHITECTURE

The **Liwanag Hub** is a mixed-use interactive community landmark hub highlighting the Maginhawa experience. Each space is representative of a slice of life in the district, commemorating its culture. Its walls frame and display the interior as if a gallery providing preview and inviting onlookers to explore further and to join the leisure and productivity promoted by the spaces. Its open public area, likewise, encourages this participation and interactivity—through spaces for active movement.

The hub unites culture and community to provide a visual and physical experience that feels both familiar and new. In its understanding of its environment and users, the spaces respond to the existing structures as well as the needed new spaces. The simplicity of its orthogonal form summarizes this familiarity, whereas the few undulating shapes conveys little of the new.

Liwanag hub is a visual communication of the street's exploring, unbounded culture—its openness.

## THE CONCEPT

**OPEN** is the keyword driving many aspects of this design. It summarizes the idea and the translated form, especially notable design priorities of the hub:

### ENVIRONMENT

The design is open for natural light and ventilation through spatial openness. The double roof minimizes heat absorption. Large window walls, high ceilings, and greenery regulate light and temperature to minimize use of artificial light and ventilation.

### CULTURE

The design is open for natural light and ventilation through spatial openness. The double roof minimizes heat absorption. Large window walls, high ceilings, and greenery regulate light and temperature to minimize use of artificial light and ventilation.

### COMMUNITY

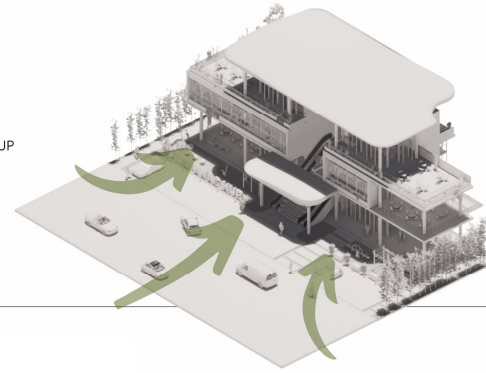
The design opens up communal spaces for the public. It provides home, storage and volunteer space for the community pantry, first organized by Ana Patricia Non during the pandemic. Familiar food spaces are also distributed throughout the building.

## THE SITE

The site is a **1132 square meter lot** in 101 Maginhawa Street, UP Village, Diliman, Quezon City.

Maginhawa Street is 2.2 kilometers in length and traverses UP Village, Teachers Village (East and West), and Sikatuna Village.

Maginhawa and its adjacent streets declared as the Maginhawa Arts and Food Hub through City Ordinance No. SP-2439, s-2015.



## ACCESSIBILITY & VISIBILITY

The site is primarily accessible and visible directly from the Maginhawa road and sidewalk, the front of the property.

### AN INVITING FRONT EXTERIOR

With accessibility and visibility mainly isolated to the front, the design sets out to create an inviting exterior—one that represents the experiences within the structure and would motivate users to partake in this community. Large window walls allow for this visibility from the outside. Column details, art spaces, and greenery provide the visual appeal.



## THE NEUTRAL CANVASS

The hub utilizes contrast of colors to make certain spaces stand out. Finishes are dominantly neutral in color.



- WHITE STUCCO FINISH
- GREY PAINT FINISH
- COLORED METAL PANEL CLADDING



## THE POP OF COLORS

Graffiti and other forms of street art are popular art forms in the street. Mural walls and blocks were incorporated in the design to serve both as a platform for artistic expression for local artists, as visual representation of the colorful Maginhawa culture. The vibrancy, in contrast with the muted colors, make it stand out even from the exterior.



FOOD PLAZA



COMMUNITY PANTRY



GREEN WALKWAY

### GREEN SPACE

Spaces for vegetation and landscaping are distributed throughout the area, from walkways, the playground, to plant boxes at the 2nd and 3rd floor level.



OUTDOOR PLAYGROUND

### FREEDOM WALL

The centerpiece of the walls is right at the end top of the front stairs and escalators and the very middle of the building. This freedom wall is reserved for artistic commemoration in Maginhawa and, therefore, has added monumental function to it.



LIWANAG HUB





**GROUND FLOOR LEVEL**

**SECOND FLOOR LEVEL**

**THIRD FLOOR LEVEL**

**THE COMMUNITY LEVEL**

The ground level spaces are allocated for active and public use.

For community service: the community pantry, donation center, and volunteers' space are located here.

For communal leisure: Outdoor playgrounds, a multipurpose open space, and the food plaza.

For cost maintenance, food stall spaces for rent are distributed throughout the building besides the plaza.

**THE PRODUCTIVITY SPACE**

The 2nd level is allocated for co-working and study spaces as the major demographic around the site are students. Food stalls and a coffee bar are also allocated here.



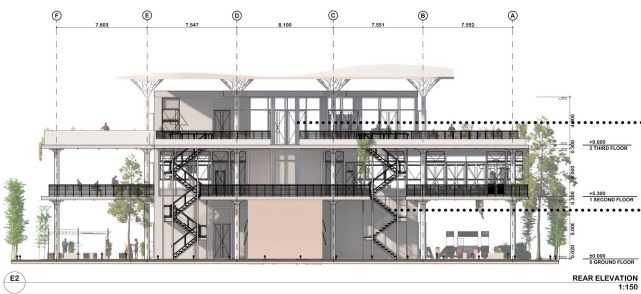
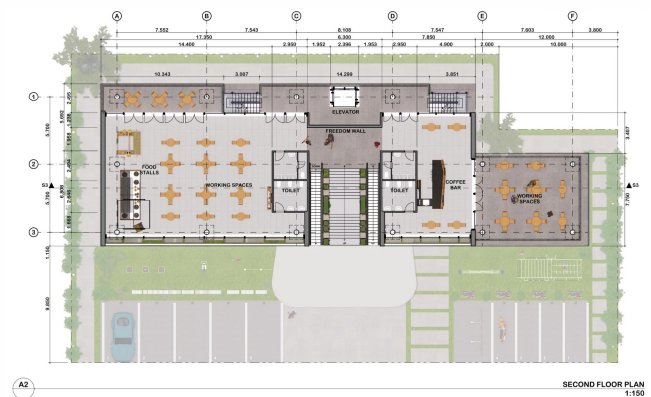
CO-WORKING SPACE AND COFFEE BAR

**ROOFTOP PRIVACY**

The main personnel office is located in the 3rd floor along with an intimate setting rooftop restaurant.



ROOFTOP RESTAURANT



**ACCESSIBILITY TO OTHER FLOOR LEVELS**

- ..... ELEVATOR
- ..... FRONT STAIRS
- ..... ESCALATORS (UP & DOWN)
- ..... FIRE EXIT STAIRS

