

HIKARI: SIMPLE & CLEAN TWO-STOREY RESIDENTIAL TOWNHOUSE

The proposed development of a 50 x 50 area revolved around the concept of Hikari, translating to both "light" and "simple & clean". Light refers to vast areas of the landscape being open which users can play and walk around. Outdoor elements included planter boxes for backyard farming and gathering spaces associated with seating area and a fireplace. The two-storey residential house depicts simplicity of both exterior and interior look emphasizing the white finish for cleanliness.



Site Development Plan



Front Elevation



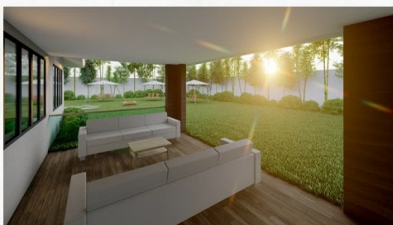
Left Elevation



Rear Elevation



Right Elevation



Patio



Second Floor Bathroom

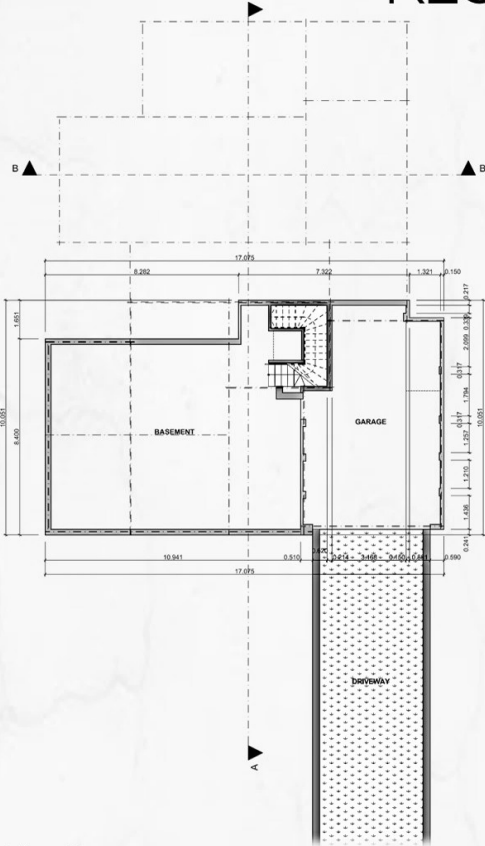


Living Room

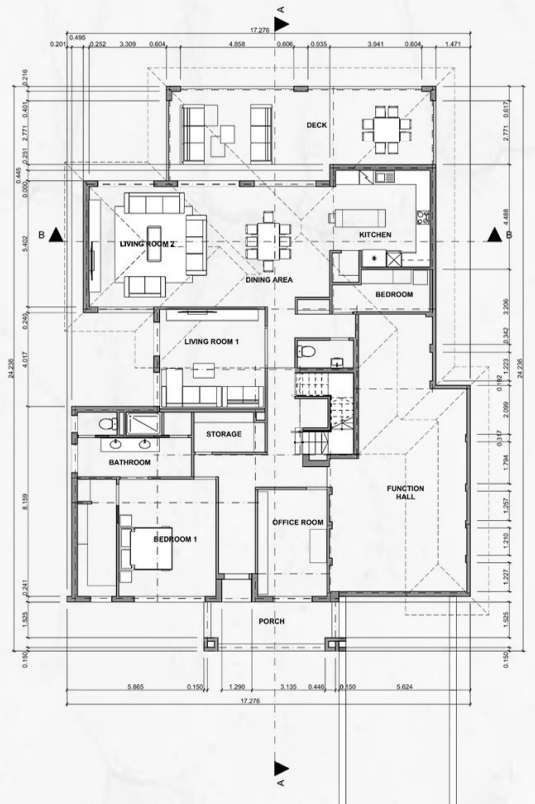


Kitchen & Dining Area

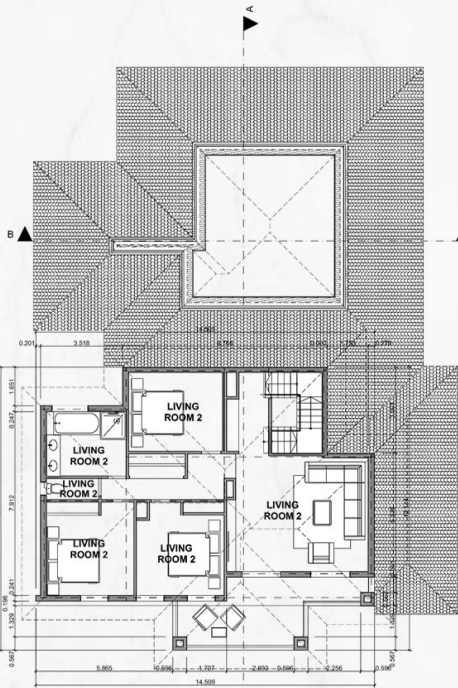
HIKARI: SIMPLE & CLEAN TWO-STOREY RESIDENTIAL TOWNHOUSE



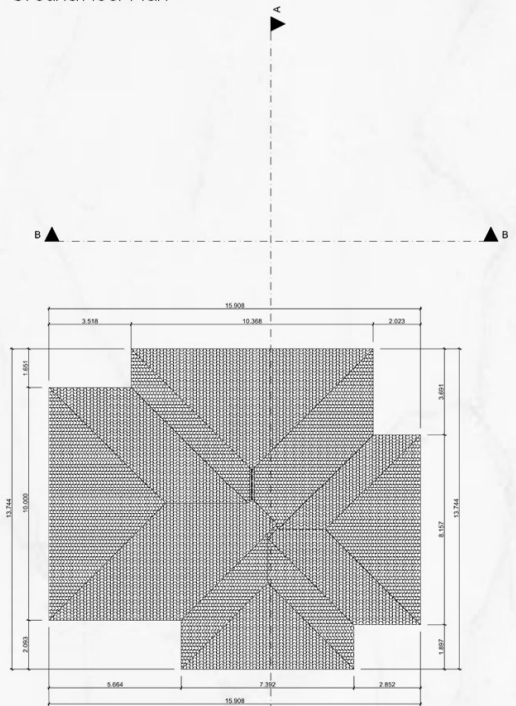
Basement Floor Plan



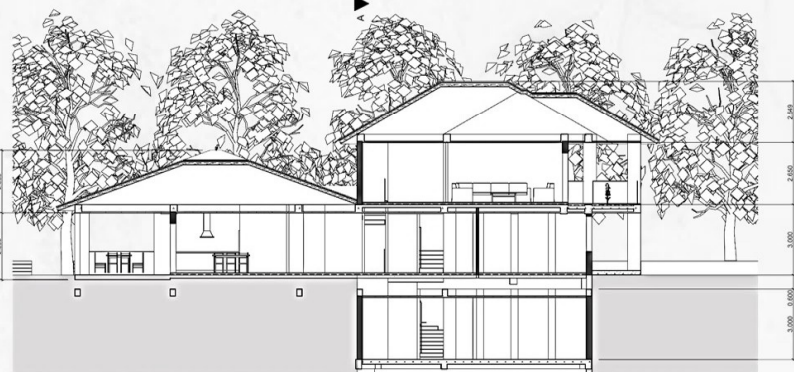
Ground Floor Plan



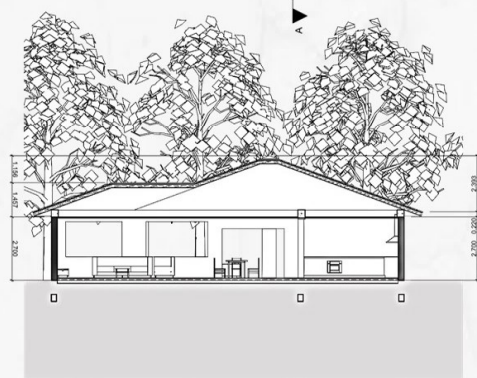
Second Floor Plan



Roof Plan



Cross Section A - A'



Cross Section B - B'