

# SPACE PROGRAMMING

## STRICT PROTECTION ZONE



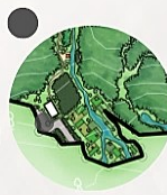
## BOTANICAL PARK



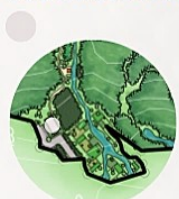
## EXISTING FARM



## PARKING AREAS



## VISITOR'S CENTER



## RESTING PODS



## PLAZA



## FOCAL POINTS



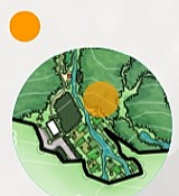
## PLAY AREA



## CANOPY WALK



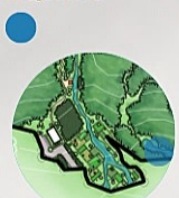
## HERBS & SPICES



## PICNIC GROUND



## AQUATIC



## FRAGRANT & FOLIAGE



# ABEL LOCO

A BOTANICAL PARK FEATURING FOCAL POINTS AS WAYFINDING MECHANISMS

Formerly known as Bigbiga Spring Watershed Forest Reserve, Bigbiga Protected Landscape is a terrestrial ecosystem with shrubland areas and agroforestry.

It functions as a major source of water that freely flows for domestic and irrigation and one has regulation through the Narvacan Water District.

## DESIGN CONCEPT

The design approach of the proposal consists mainly of the three focal points showcasing a general product and overview of the weaving process carefully situated at a reasonable distance for wayfinding.

Educational Medicinal Culinary Conservational Experiential



## BUBBLE DIAGRAM



- EXISTING FARM LOTS
- PARKING AREA
- VISITOR'S CENTER
- RESTING PODS
- PLAZA
- FOCAL POINTS
- PLAY AREA
- CANOPY WALK
- HERBS & SPICES GARDEN
- PALM PICNIC GROUND
- FRAGRANT & FOLIAGE GARDEN
- AQUATIC GARDEN
- DIRECTLY CONNECTED
- INDIRECTLY CONNECTED



## FUNCTIONAL DIAGRAM

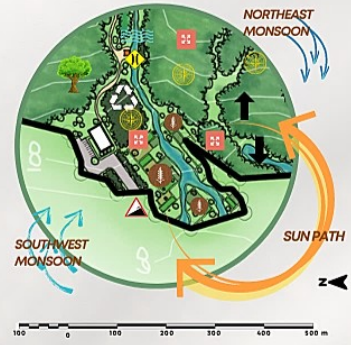


- EXISTING FARM LOTS
- PARKING AREA
- VISITOR'S CENTER
- RESTING PODS
- PLAZA
- FOCAL POINTS
- PLAY AREA
- CANOPY WALK
- HERBS & SPICES GARDEN
- PALM PICNIC GROUND
- FRAGRANT & FOLIAGE GARDEN
- AQUATIC GARDEN
- MAJOR FOOTPATH
- MINOR FOOTPATH



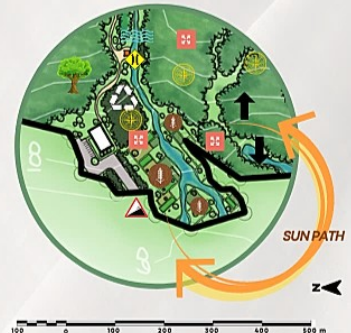
WELCOME SIGNAGE

# SITE INVENTORY



- EXISTING FARM LOTS
- HILLY ENTRANCE
- UNUTILIZED SPACE
- HIGH ELEVATION
- LOW ELEVATION
- IMPROVISE AND WOBBLY BRIDGE
- AREA BOUNDARY IN HECTARES
- AMBIGUOUS NAVIGATION
- ABUNDANT TREES
- CRITICAL RIVER

## SITE ANALYSIS



- INCORPORATE NATURE TRAIL
- DROP-OFF & PARKING AREA
- EXPERIENTIAL SPACE
- LOW MAINTENANCE GARDEN
- CATCH BASIN/AQUATIC ELEMENT
- NEW DURABLE BRIDGE
- RESTING PODS & PASSIVE GROUND
- FOCAL POINTS AS WAYFINDING
- CANOPY WALK
- BIOSWALE

## PHILOSOPHY

"regulating the relationship between man and his environment"

It creates a physical and social milieu that encompasses the meaningful frame for the activities of man.

## THEORY

The Aleatoric Milieu: An Architectural Theory on Proxemics and Navigation Design

## FRAMEWORK





Diverse flora and fauna

**Strategies:**

- Conserve and protect
- Incorporate focal points, surrounded and shaded by flora, to offer experiential landscape to every nook of the botanical garden.

- Distinctly separated resting shed
- No source of income-generating project
- Limited PA personnel/Lack of regular supervision

**Strategies:**

- Additional resting sheds
- Focal Point O3 & the Visitors' Center to exhibit and sell byproducts
- Hiring of additional PA staff/Training of tour guides/Training of Emergency Response Team and provision of complete accessories with procurement of gadgets smartphone they can use in patrolling

Potentials of Bigbiga PL/Untapped and undeveloped ecotourism values

**Strategies:**

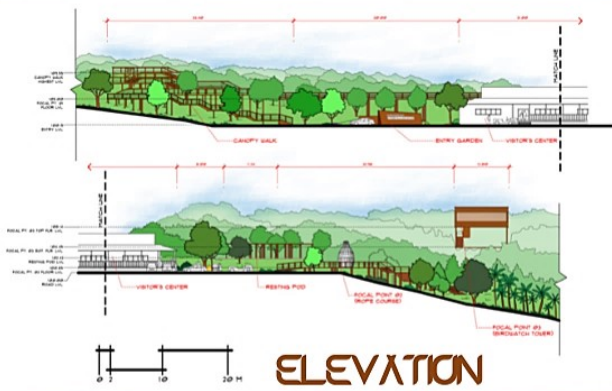
- Incorporate nature trail resembled as weaving to connect it with the rest of the area
- Development of an observatory tower thru the Focal Point O3
- Development of canopy walk
- Construction of resting sheds in designated areas using indigenous materials like Amakan material, a wooden bamboo ply similar to the weaving products.
- PA Management Office thru the Visitor's Center

· Steep elevation

· Improvise and wobbly bridge in the river

**Strategies:**

- Use of on-ground and elevated trails/canopy walk/situate a drop-off & parking areas
- New bridge made of local materials closed to weaving



ELEVATION



SECTION



SITE DEVELOPMENT PLAN

FOCAL POINT O3 AREA

AERIAL PERSPECTIVE

