

SPACE PROGRAMMING

STRICT PROTECTION ZONE

EXISTING FARM LOTS

ENTRANCE

RESTING SHEDS

WEAVING STATIONS

VIEW DECK



ABEL LOCO

A NATURE TRAIL FEATURING WEAVING STATIONS

Formerly known as Bigbiga Spring Watershed Forest Reserve, Bigbiga Protected Landscape is a terrestrial ecosystem with shrubland areas and agroforestry.

It functions as a major source of water that freely flows for domestic and irrigation and one has regulation through the Narvacan Water District.

DESIGN CONCEPT

It mainly focuses on the introduction of the weaving process while preserving the resources in the protected landscape.

Educational



Conservational



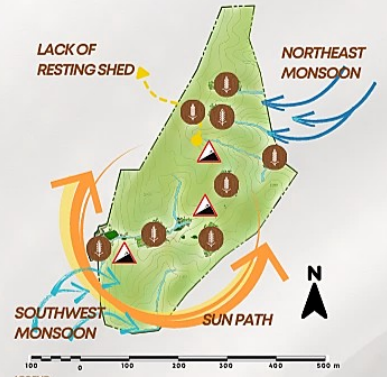
BUBBLE DIAGRAM



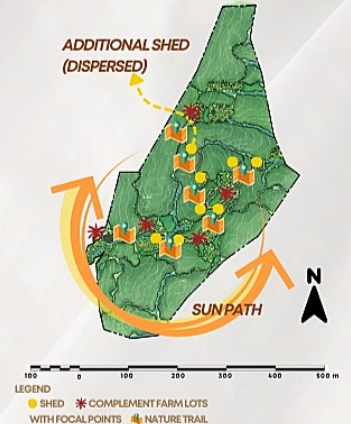
FUNCTIONAL DIAGRAM



SITE INVENTORY



SITE ANALYSIS



PHILOSOPHY

"regulating the relationship between man and his environment"
It creates a physical and social milieu that encompasses the meaningful frame for the activities of man.

THEORY

The Aleatoric Milieu: An Architectural Theory on Proxemics and Navigation Design

FRAMEWORK



SPOT PERSPECTIVE - VISITORS' CENTER

PESTLE & SWOT ANALYSIS

POLITICAL

ECONOMIC

SOCIAL

- Committed PAMB Members and PASu
- No IPAF (Integrated Protected Area Fund)

- Gathering of different wood species in the forest
- Development of ecotourism values

- Willingness of residents to participate in the conservation and protection of the landscape (as per the management plan)

TECHNOLOGICAL

LEGAL

ENVIRONMENTAL

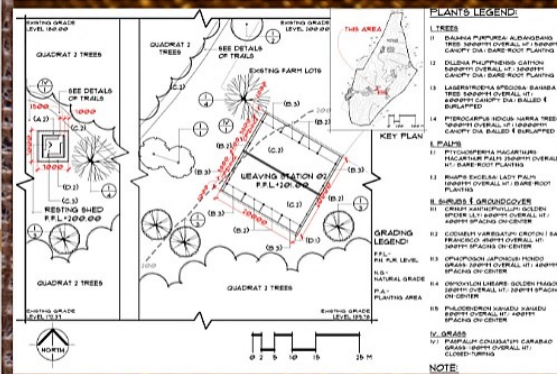
- Limited gadgets and equipment for patrolling

- BPL was legislated under ENIPAS (RA 11038) – strengthened management programs and projects, expansion of PAMB membership

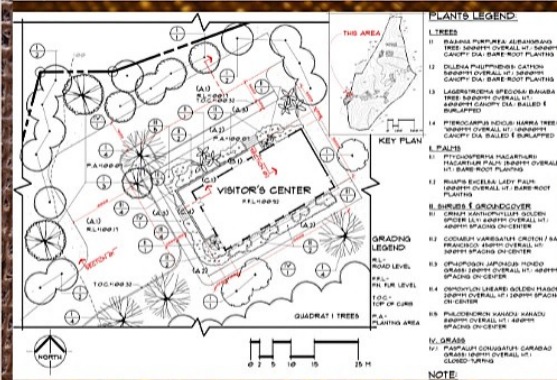
- Rich biological diversity, which are utilized by residents
- Illegal loggers from neighbouring barangays

BLOW-UP PLANS

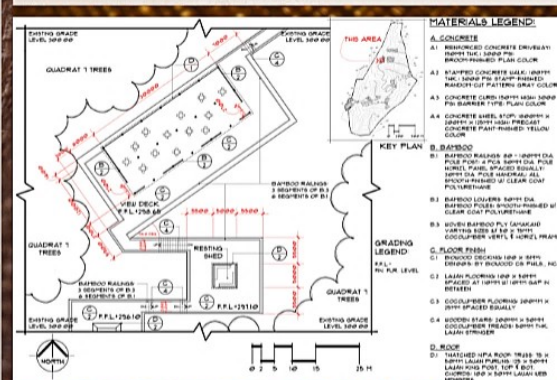
WEAVING STATION AND RESTING SHED



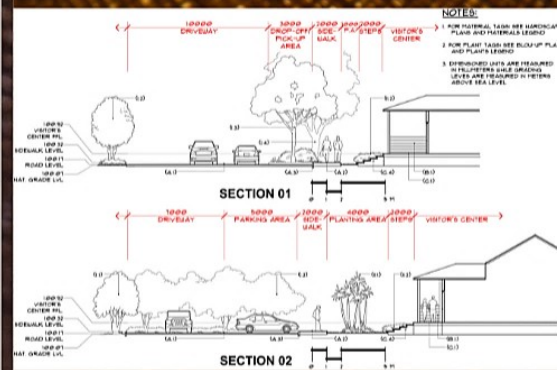
VISITOR'S CENTER



VIEW DECK



BLOW-UP SECTIONS: VISITOR'S CENTER



S

Diverse flora and fauna

Strategies:

- Conserve and protect
- Incorporate weaving stations, surrounded and shaded by flora, to educate spectators about the weaving process (the local's pride)

W

Distinctly separated resting shed

- No source of income-generating project
- Limited PA personnel/Lack of regular supervision

Strategies:

- Additional resting sheds
- Visitors' Center to exhibit and sell byproducts; put donation and grants box
- Hiring of additional PA staff/Training of tour guides/Training of Emergency Response Team and provision of complete accessories WITH procurement of gadgets smartphone they can use in patrolling

O

Potentials of Bigbiga PL/Untapped and undeveloped ecotourism values

Strategies:

- Birdwatching sites with graded trail
- Development of view decks
- Construction of resting sheds in designated areas using indigenous materials like Amakan material, a wooden bamboo ply similar to the weaving products.
- An indicative map of trekking sites
- PA Management Office
- Designated entrance

T

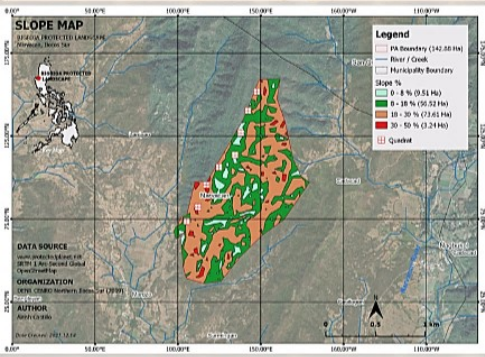
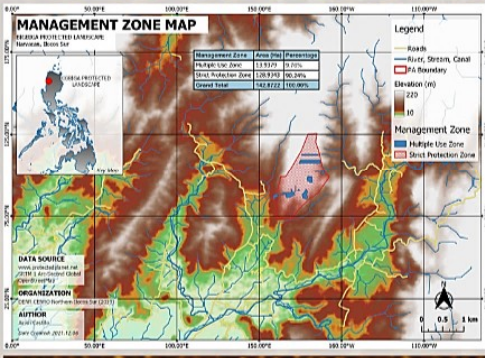
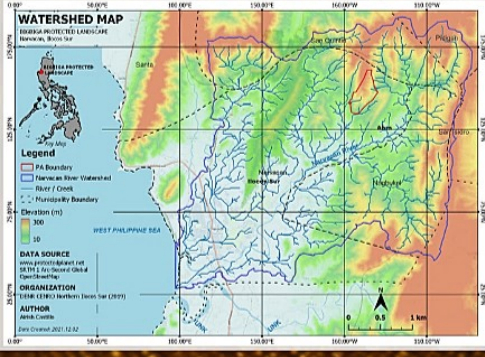
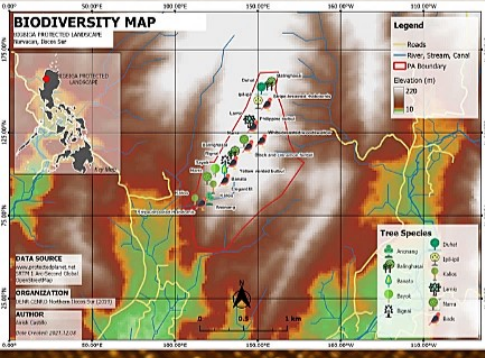
Steep elevation

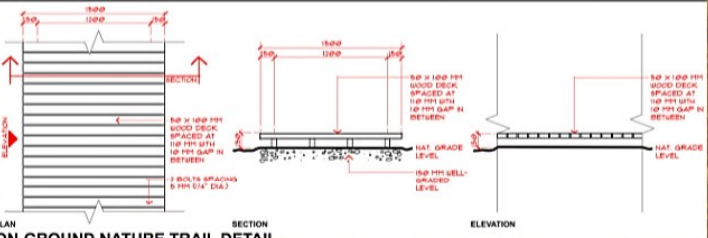
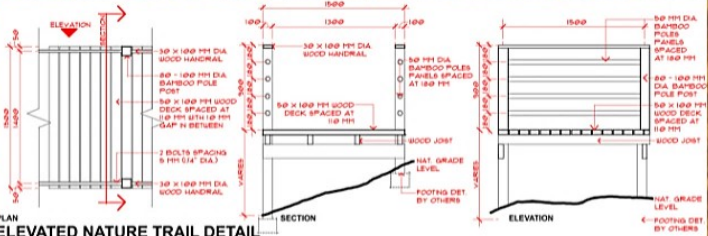
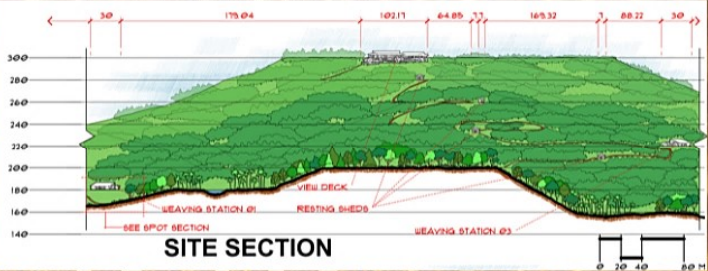
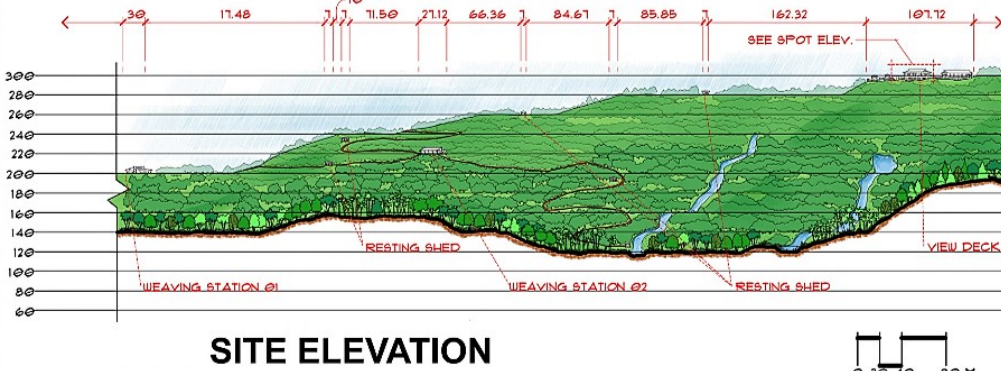
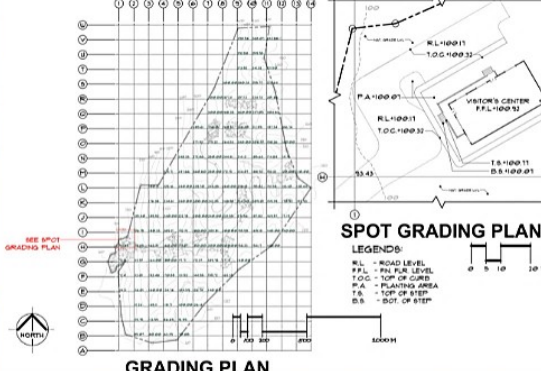
Unregulated/Illegal resource use such as:

- gathering of fuelwood/firewood species and minor forest products
- Wildlife hunting (abuyo, monitor lizard, honeybees)
- Poaching

Strategies:

- Use of on-ground and elevated trails
- Offices/Areas for the PA staff to regulate the illegal sourcing





FOOT LOOM OR "TILAR" WEAVING / "PAGHABHI"

THE GENERAL PROCESS OF WEAVING:

HARVESTING → COLLECTING → SPINNING → WEAVING

IN-DEPTH PROCESS OF WEAVING:

START: Weaving is setting up the warp, vertical threads of the loom before weaving them for weaving.

1ST: Weaving is setting up the warp, vertical threads of the loom before weaving them for weaving.

WEAVING: Weaving is setting up the warp, vertical threads of the loom before weaving them for weaving.

3RD: ROLLING OF THREADS: The threads are rolled and laid out in a bamboo warp beam (part of the loom) to prevent them from becoming tangled.

PROXIMITY MATRIX

ENTRY	●
VISITORS' CENTER	●
RESTING SHEDS	●
WEAVING STATION 1	●
WEAVING STATION 2	●
WEAVING STATION 3	●
VIEW DECK	●

LEVEL OF PROXIMITY

- Adjacent
- Nearby
- Not related

SITE DEVELOPMENT PLAN



- LEGEND:**
- ENTRY (A)
 - VISITORS' CENTER (B)
 - RESTING SHED (C)
 - STATION 01 (D)
 - EXISTING FARM LOT (E)
 - STATION 02 (F)
 - STATION 03 (G)
 - VIEW DECK (H)

