



THE TERRACES

maghinawa street's food & art hub

The building aims to synergize maghinawa's local food and art cultures in a structure with recognizable form

concept



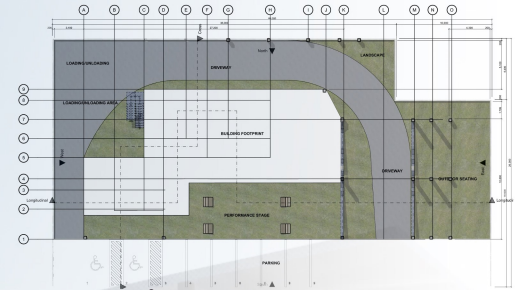
synergy



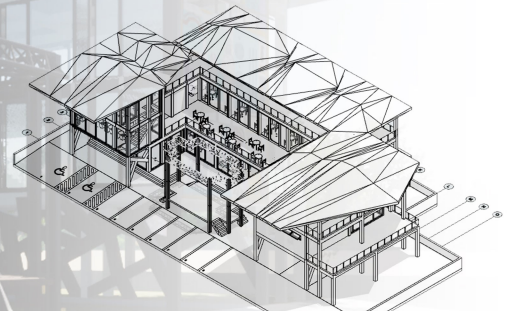
local



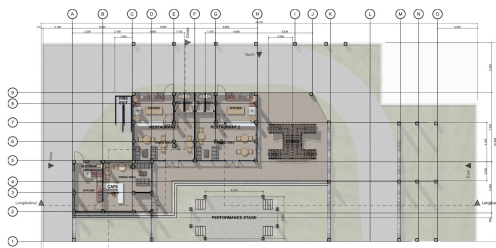
recognizable



site development



isometric view

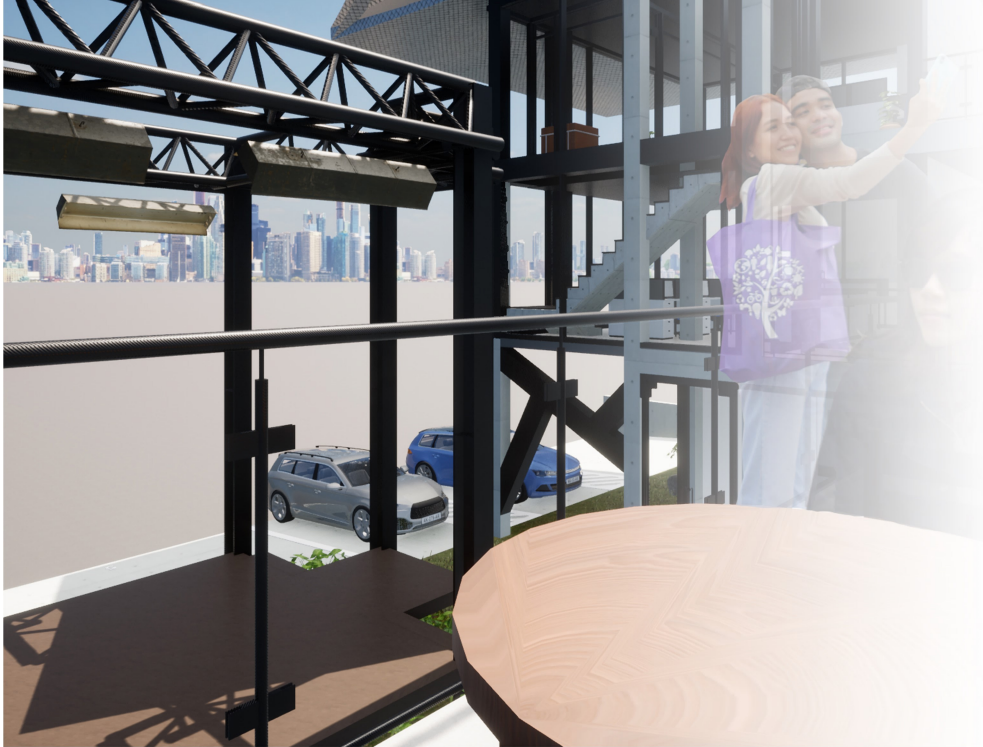


ground floor

dining: geared towards food, the ground floor features two restaurants offering a sit-down dining experience and a cafe

performance: a central stage highlights the performing arts





second floor

the crux: geared towards synergy, the al fresco dining spaces offer unobstructed views of the performance space below.

art exhibition: adjustable panels allow for a flexible gallery space capable of accommodating different art forms

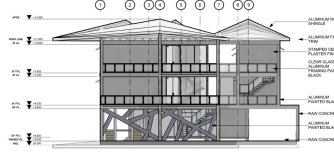
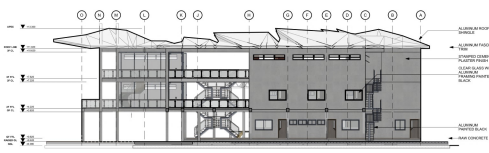
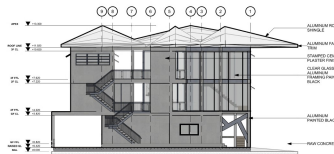
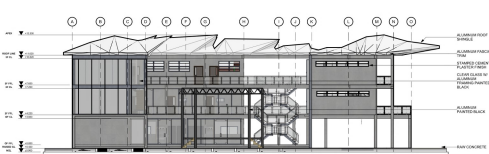


third floor

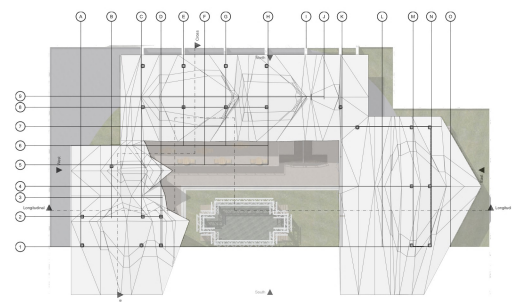
art production: geared towards creation, the third floor features co-working spaces, and dance and music rehearsal studios



elevations



roof



sections

