

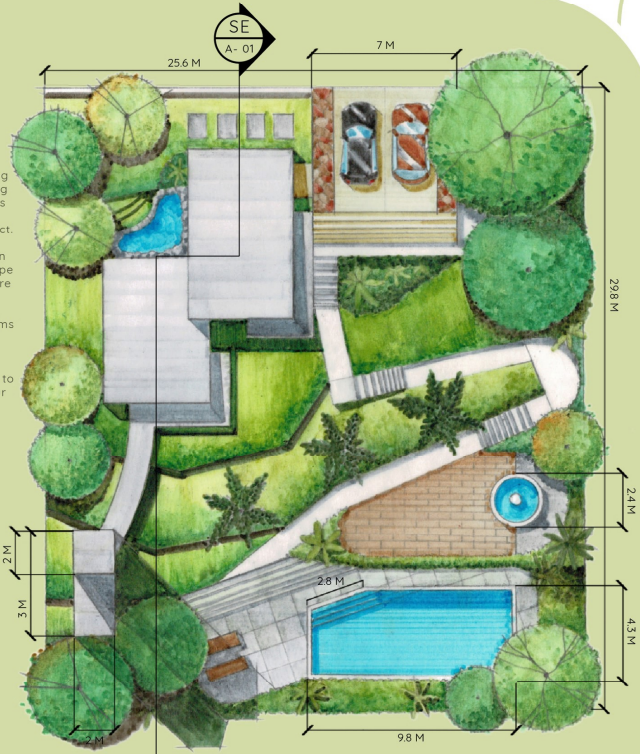
# URBAN SANCTUARY

THE UTOPIA PROJECT

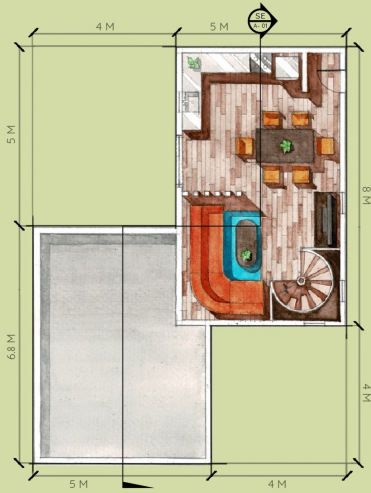
## THE UTOPIA PROJECT VISION

Creating functional living spaces while maintaining a healthy environment is the main motivation behind the Utopia Project. With the current rapid urbanization, it has been a challenge for landscape architects alike to restore the balance between natural and man-made, therefore the project aims for the construction of sustainable modern housing that welcomes ample space for nature to thrive in the midst of our urban lifestyle.

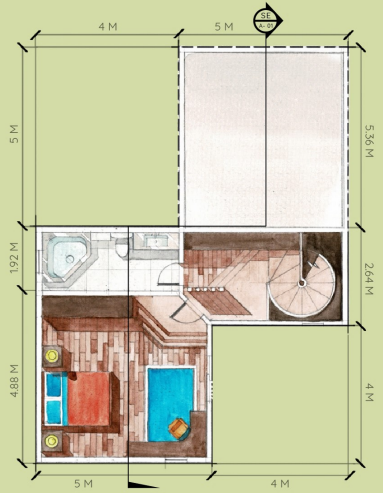
The Urban Sanctuary is a two-story residence, with large living spaces and one master bedroom. It features a large tower structure overlooking the expansive garden spaces of the site.



SITE DEVELOPMENT PLAN SCALE 1:250

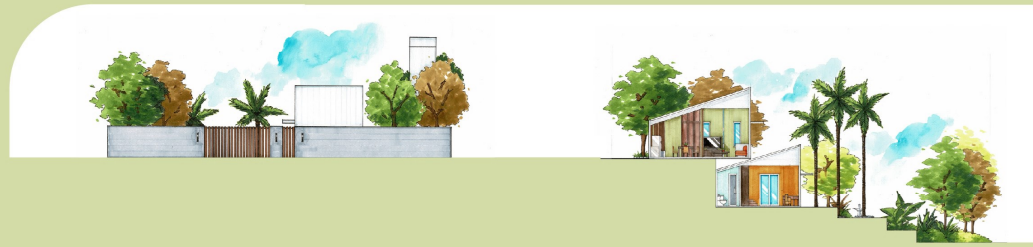


UPPER FLOOR PLAN SCALE 1:150



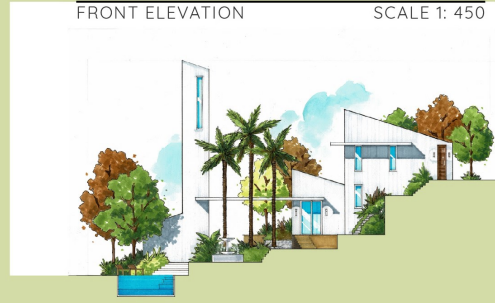
LOWER FLOOR PLAN SCALE 1:150

FUTURA ATELIER  
Architectural Firm

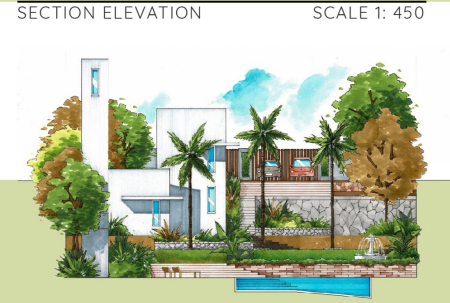


FRONT ELEVATION SCALE 1: 450

SECTION ELEVATION SCALE 1: 450



SIDE ELEVATION SCALE 1: 450



REAR ELEVATION SCALE 1: 450

## URBAN SANCTUARY FEATURES

The Urban Sanctuary features carefully-carved terraces and large trees that bring vacation right to your doorstep. With retaining walls made of bricks and rocks, the garden areas are designed to look most natural in contrast to the contemporary design of the residence. As it's easy to get lost in the hustle and bustle of work and study life, the urban sanctuary allows easy access to nature for rejuvenating and stress-relieving activities.

It features a large fountain and an expansive pool for relaxation or water activities, all of which are surrounded with an abundance of trees and foliage. It also features a large parking deck with room for two vehicles. With ample room for landscape features, the site is designed to make you feel safe and secure in the sanctuary of nature.

