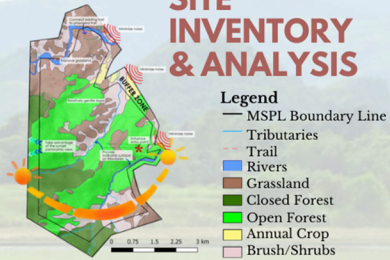


THE PARK OF Untold Stories

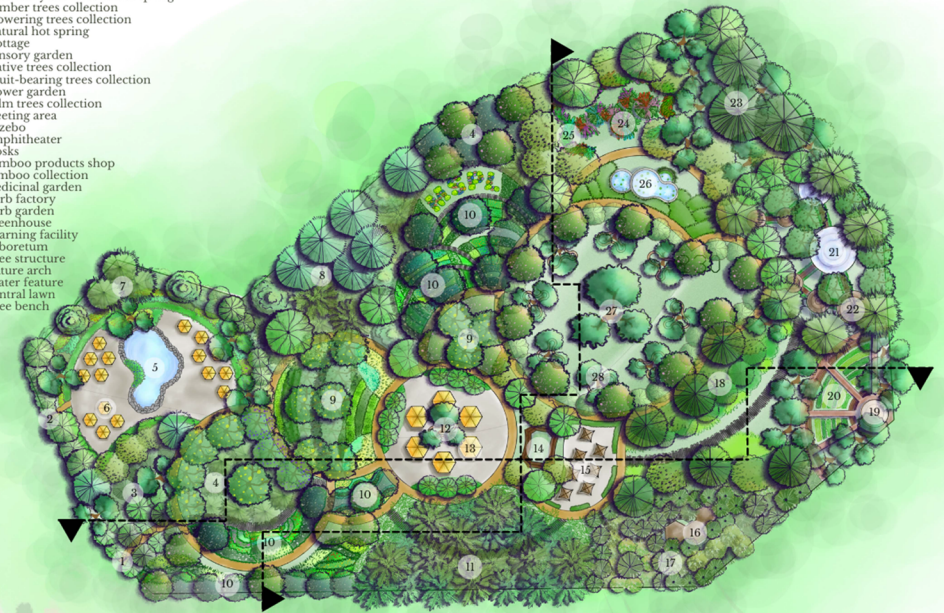
MANLELUAG SPRING PROTECTED LANDSCAPE

Manleluag Spring Protected Landscape (MSPL) is known because of its natural hot springs. Aside from the spring, the PA is also known because of its importance in biodiversity. MSPL is dominated by thick forests and is a home to over 90 bird species and some endangered mammals. Culturally speaking, the locals have interesting stories and legend about Manleluag Spring Protected Landscape.

SITE INVENTORY & ANALYSIS



- 01 Main entrance
- 02 Secondary entrance to hot spring
- 03 Timber trees collection
- 04 Flowering trees collection
- 05 Natural hot spring
- 06 Cottage
- 07 Sensory garden
- 08 Native trees collection
- 09 Fruit-bearing trees collection
- 10 Flower garden
- 11 Palm trees collection
- 12 Meeting area
- 13 Gazebo
- 14 Amphitheater
- 15 Kiosks
- 16 Bamboo products shop
- 17 Bamboo collection
- 18 Medicinal garden
- 19 Herb factory
- 20 Herb garden
- 21 Greenhouse
- 22 Learning facility
- 23 Arboretum
- 24 Tree structure
- 25 Nature arch
- 26 Water feature
- 27 Central lawn
- 28 Tree bench



SITE DEVELOPMENT PLAN



DESIGN PHILOSOPHY

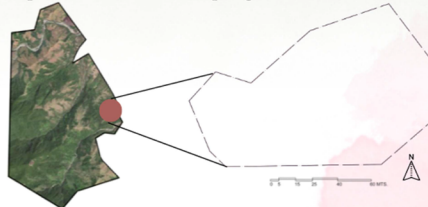
Story-telling Landscapes

Story-telling landscapes is based on the narrative theory that states that people are essentially storytellers. It starts from the assumption that narrative is a basic human strategy for coming to terms with fundamental elements of our experience.



CHOSEN LOCATION IN MSPL

- The location is:
- on the multiuse zone.
 - lacking in trees as compared to the other areas.
 - near the entrance.
 - presence of natural hot spring.



DESIGN CONCEPT

Pluma

Pluma is one of the primary writing instruments for centuries. Our heroes used it to write our history, especially during the Spanish era. The design takes inspiration from pluma. Just as it was used to preserve and narrate our history through paper, landscape elements for this design will be used to showcase what was, what is, and what will Manleluag Spring Protected Landscape be, through a botanical garden.

SWOT ANALYSIS

Strengths

- The site is accessible to the visitors.
- A natural hot spring is on the site.
- Site is relatively flat.

Opportunities

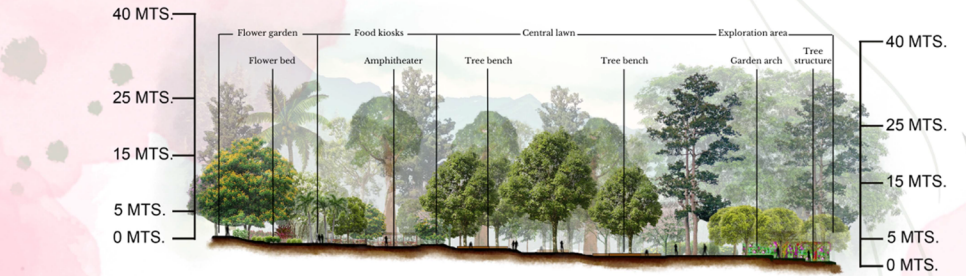
- There are residential areas surrounding the site.
- Near the site is a major road.
- There are proposed activities by the gov't and NGOs.

Weaknesses

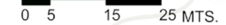
- Most area of the site is barren.
- The site has an irregular shape.

Threats

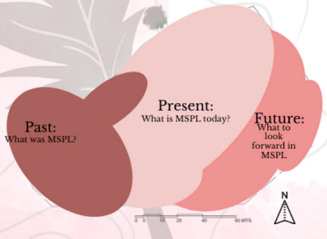
- A major road leading to the site may impose danger to the visitors.
- The site is prone to landslide or soil erosion due to its topography.



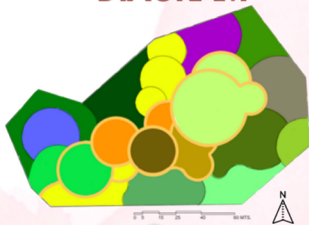
LONGITUDINAL SECTION-ELEVATION



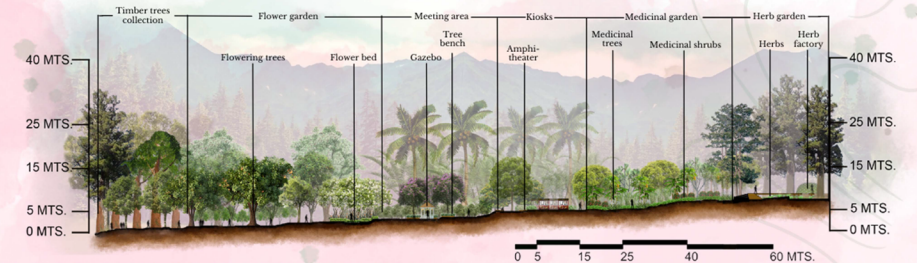
ZONES



FUNCTIONAL DIAGRAM



- Flower garden
- Timber trees collection
- Natural hot spring
- Sensory garden
- Meeting area
- Amphitheater and food kiosks
- Exploration area
- Learning facilities
- Palm trees collection
- Bamboo garden
- Medicinal garden
- Herb garden
- Arboretum
- Native trees collection



CROSS SECTION-ELEVATION





WATER FEATURE SPOT PERSPECTIVE

The water feature reflects the meaning of the word, Manleluag, which means "boiling" in Pangasinense through the use of water bubbler.

HERB GARDEN SPOT PERSPECTIVE

The herb garden features some of the traditional medicinal plants and herbs used by the Indigenous Sambal-Bolinao of Pangasinan.



FLOWER GARDEN SPOT PERSPECTIVE

The flower garden highlights the MSPL letters, strengthening the identity of the site. The flowers used were commonly found in Pangasinan.

AERIAL PERSPECTIVE

