

DALAHIK COMMUNITY PARK

Dalahik is a Cebuano word meaning "the point reached on the seashore by the waves." In line with the main theme of the community park, the design incorporates the concept of waves throughout the park design. This flow guides the people towards the "shores" of the park, namely the small plaza, garden, playground, and picnic area.

We can also perceive this within the context of our personal lives, wherein the sea represents the hardships and problems that people experience every day. From the seas which bring wealth to our country, it is also the place for the fisherfolk, the seamen, and all others who endure countering the rough seas.

DESIGN PHILOSOPHY

- Psychology of Space-Site Volumes**
Present in the elements is the base plane, vertical plane, and overhead plane, which provides significant impact on a person's psychological behavior.
- Symbolism-Place Concepts**
The small plaza shaped like a dome is a pearl and the curvilinear community park as a whole is a dynamic sea, embracing and celebrating Filipino culture.
- Placemaking Theory**
In general, the design project is intended for sociability, access, linkages, and comfort.
- Cultural Landscape Theory**
The elements of the community park are modelled and inspired after various trademarks of Philippine culture.

PROJECT GOALS

- For leisure and recreation
- De-stressing and Relaxation
- Celebration of the Filipino Culture

PHILIPPINE CULTURE

We embodied the Filipino concept in the design to show what the Philippines is all about and keep the culture alive that has been usually forgotten.

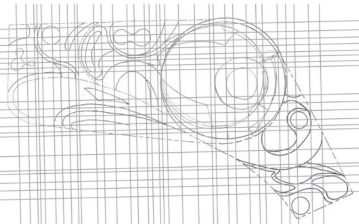
PHILIPPINE PEARL

Pearl is the national gem of the Philippines and has a significant representation of the country. It shows the sophistication and craftsmanship that runs through the Filipino blood.

SEA WAVES

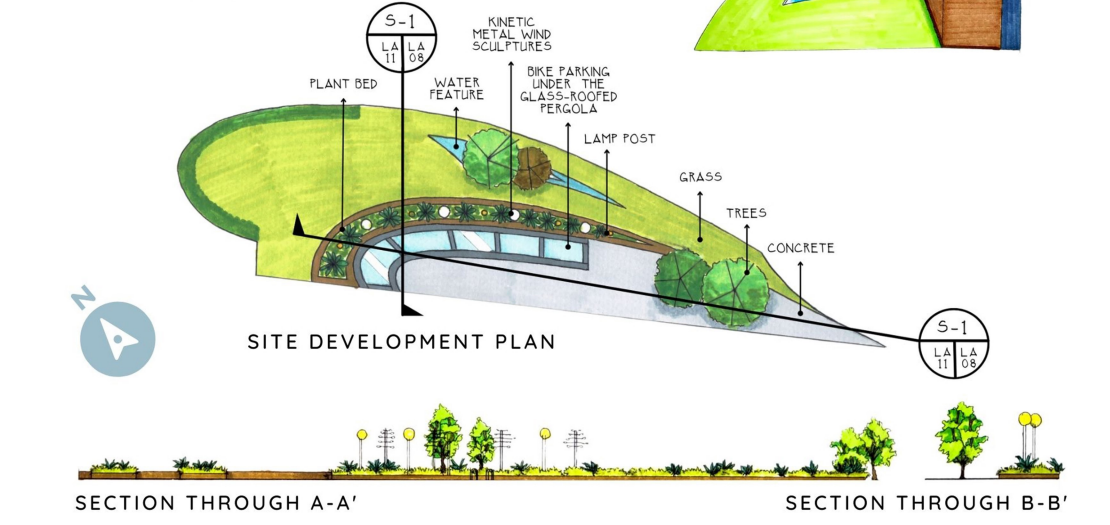
With the inspiration of "sea waves," the design featured curvilinear lines in the representation of our Filipino fisherfolk and in the larger, the sea played in the Philippine history.

STRENGTHS <ul style="list-style-type: none"> Accessible to roadways Situated in a Residential Area Serves local residents and nearby communities Less transportation costs for residents Provides open view from the street and neighborhood 	WEAKNESSES <ul style="list-style-type: none"> Food-risk area because of the nearby river Susceptible to vehicle noise due to adjacent roads
OPPORTUNITIES <ul style="list-style-type: none"> Creation of new developments Build connections of the community through shared spaces Facilitate development that encourages interesting activities Economic growth for the local area 	THREATS <ul style="list-style-type: none"> Seasonal flooding is likely, depending on rainfall that will cause devastation in the area Growth of future developments and establishments in the area will result in an influx of large population, causing congestion and pollution in the area



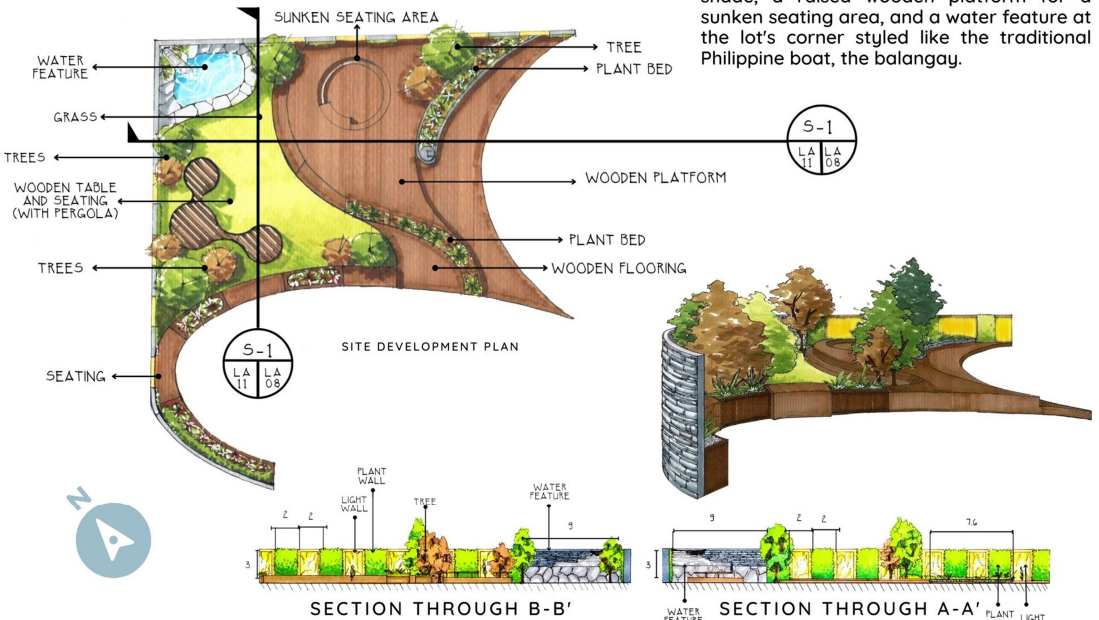
PARK ENTRANCE

Upon entering the the park, a sign will be first seen that reads "Dalahik" in Baybayin. The entry is connected to the bike parking area. The built entry plaza is separated from the bikes by a plant bed and entrance island, with kinetic installations, greenery, and water elements flanking the path.



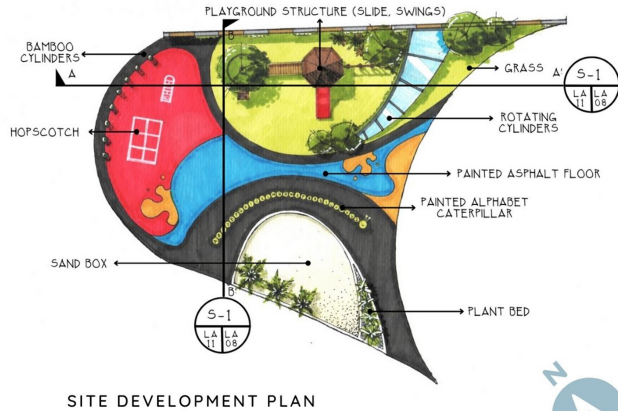
PARK PICNIC AREA

Visitors may visit the picnic area with plenty of chairs and hardwood floors. There are also grasses for lounging, a pergola for shade, a raised wooden platform for a sunken seating area, and a water feature at the lot's corner styled like the traditional Philippine boat, the bangalay.

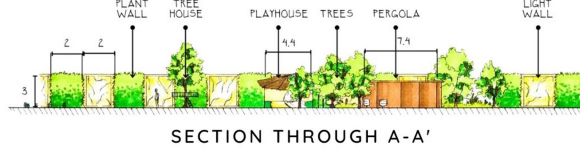


PARK PLAYGROUND

Palm trees and plants add color to the playground where kids can play. It is paved in national flag colors and includes traditional Filipino games, a treehouse structure, and a sandbox. Children will learn through cylinder puzzles of national symbols, alphabet floor painting, and musical drums.

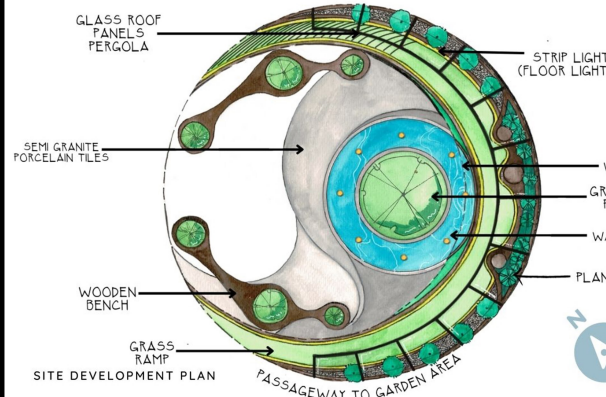


SITE DEVELOPMENT PLAN

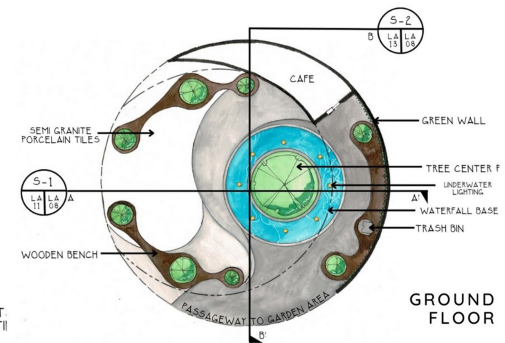


SMALL PLAZA

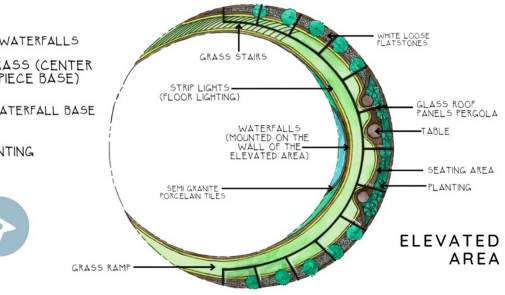
The plaza will be the park's focal point, with an elevated part accessible through ramp and stairs. The focus of the ground level is a bani tree and waterfall, while a pergola of glass panels shapes the raised area. A café is situated beneath the elevation, surrounded by a large green wall and more seats.



SITE DEVELOPMENT PLAN



GROUND FLOOR

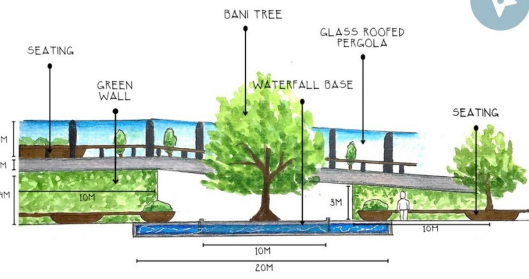
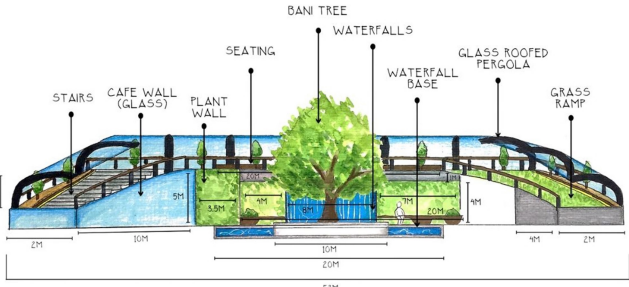


ELEVATED AREA

SMALL PLAZA

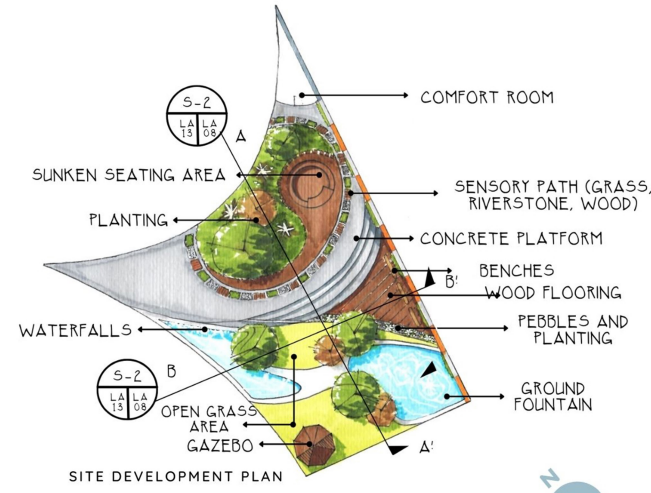
The main purpose of the flat and wide elevated area is for walking, seating, and gazing at the scenic view below and the wholeness of the community park.

The falling water behind the erected tree serves as a backdrop to highlight the central cynosure and it also portrays the hundreds of waterfalls that our country has.

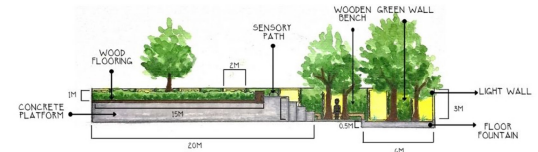


PARK GARDEN

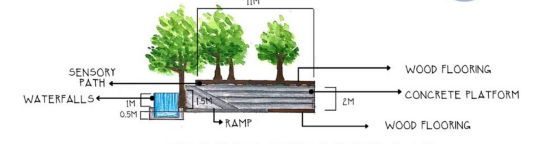
The garden section is accessed from beneath the plaza elevation. A sensory path is established, and a lounging area with aromatherapeutic plants and a barefoot-friendly floor fountain where guests may submerge their feet and feel the flow of water.



SITE DEVELOPMENT PLAN



SECTION THROUGH A-A'



SECTION THROUGH B-B'