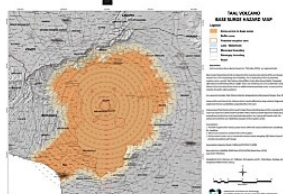
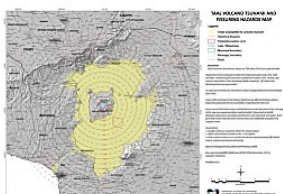
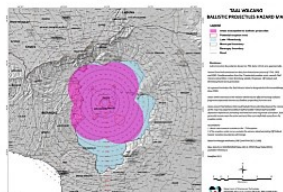
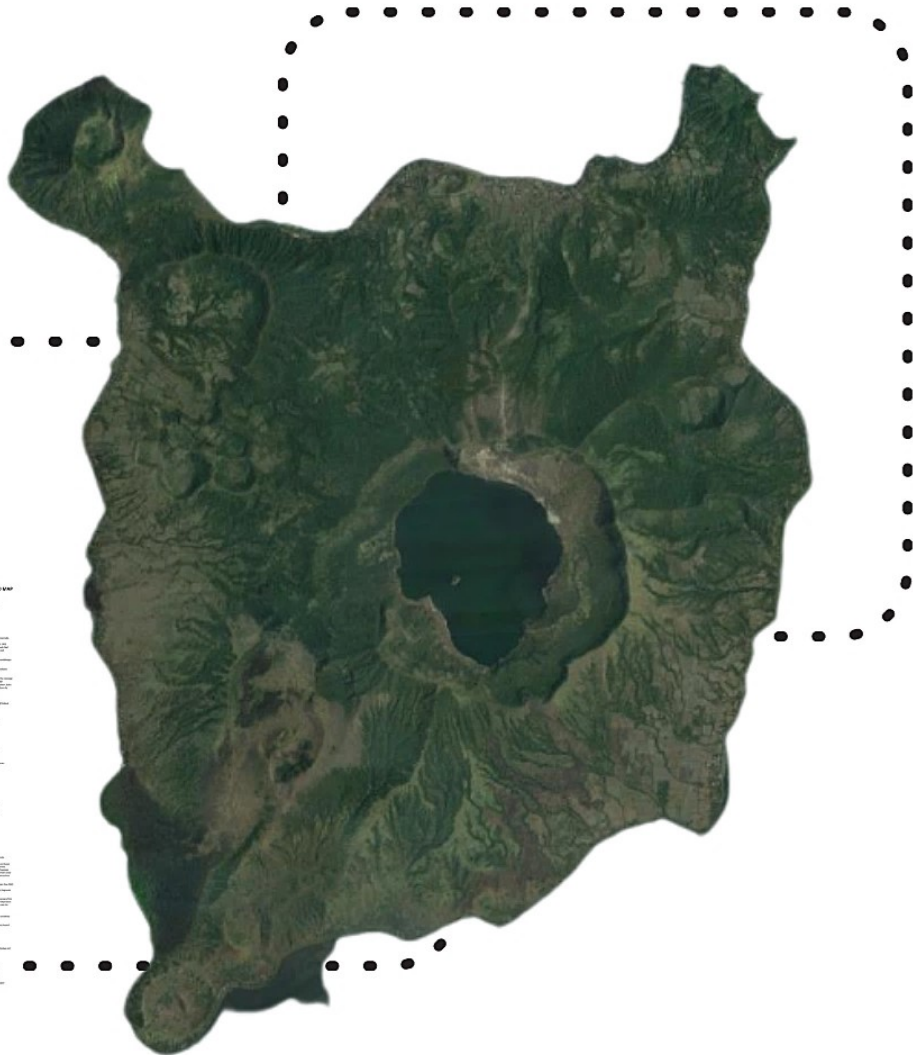
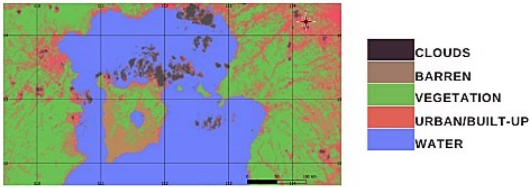
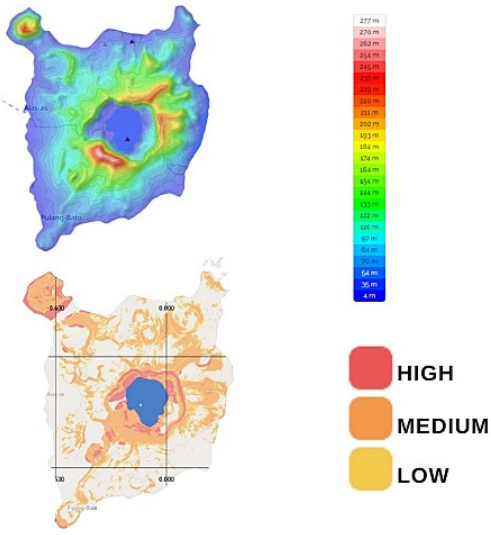


IKINTAL ANG TAAL

WE FIRST DEFINE ARCHITECTURAL REHABILITATION AS A DESIGN PROCESS AFFECTED BY SPECIFIC, CONTEXTUAL CONSTRAINTS. WE THEN DESCRIBE SOME DIFFICULTIES RELATED TO INTEGRATING DATA RELATED TO USERS, IN PARTICULAR TO DISABLED USERS, IN THIS DESIGN PROCESS, FROM A COLLABORATIVE ENGINEERING (CE) POINT OF VIEW. IN THE THIRD PART, WE PROPOSE THAT PRODUCT LIFECYCLE MANAGEMENT (PLM) METHODS AND TOOLS MAY ASSIST CE IN ARCHITECTURAL REHABILITATION.

WHEN PROTECTED LANDSCAPES SERVE AS POPULAR RECREATIONAL RESOURCES AND DESTINATIONS, THEN THEY MAY HOLD SIGNIFICANT USE VALUES FOR THOSE PEOPLE THAT VISIT THEM. RECOGNITION OF THESE RECREATIONAL BENEFITS OF PROTECTED LANDSCAPES PROVIDE A SOUND ECONOMIC RATIONALE FOR THEIR MANAGEMENT. THIS STUDY PROVIDES ESTIMATES OF THE RECREATIONAL VALUE VIA BENEFIT TRANSFER OF TAAL VOLCANO PROTECTED LANDSCAPE IN THE PHILIPPINES. ONE STUDY SITE IN THE PHILIPPINES WAS SELECTED AND USED IN A POINT ESTIMATE TRANSFER APPLICATION. LIKewise, A METAREGRESSION TRANSFER FUNCTION MODEL WAS ESTIMATED BASED ON SELECTED 'STUDY SITES' FROM THE US. RESULTS SHOW THAT POINT ESTIMATE TRANSFER APPROACH PROVIDED A CONSERVATIVE ESTIMATE OF THE RECREATIONAL VALUE OF THE SITE THAN THE INTERNATIONAL META-REGRESSION BENEFIT FUNCTION TRANSFER APPROACH. THE ESTIMATED AVERAGE WELFARE ESTIMATE OF RECREATIONAL ACCESS USING POINT ESTIMATE TRANSFER WAS PHP 26 PER PERSON PER TRIP IN 2011 AND PHP 1,696 PER PERSON PER TRIP IN 2011 USING THE META-REGRESSION BENEFIT TRANSFER FUNCTION.

KEY WORDS: ACCESS VALUE, BENEFIT TRANSFER, CONSUMER SURPLUS, PROTECTED LANDSCAPE, RECREATION



Crater

A crater is a bowl-shaped depression on the surface produced by volcanic activity. These are formed by the outward explosion of rocks and other materials from a volcano. Craters may create an unsightly appearance on the earth's topography but with this design, people will see the beauty in disaster.

The design aims to imitate a crater of different sizes to categorize families of floras for the botanical/arboretum garden. This garden will feature an explosion of plants, from groundcovers to mature trees.

From the entrance, the visitors will be guided by the "lava walk" or the pathway, leading them to the different circles/craters of plants.

In these craters, there are many activities that will be catered in accordance with the 4 healing constructs: Psychological, Self-efficacy, Social, and Functional.

Healing

To create a space that is healing and will represent its natural and environmental context.

The environment cannot cause healing to occur but can facilitate engagement in behaviors and emotions that support healing; the environment can induce physical and emotional responses such as happiness, joy, and relaxation; and the built environment can enhance individual control and functionality—all of which are antecedents to healing.-DuBose et al, 2018

Four healing constructs by Medical Subject Headings (MeSH): Psychological, Self-efficacy, Social, Functional

thatched pavilion

2500 mmht

pavilion

2500 mmht

pond

conservatory

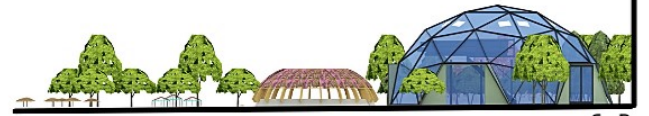
35000 mmht

education center

16000 mmht



S-A



S-B

