

NILAD

An Incremental On-Site Resettlement Plan for Baseco

Delena, M.T.

PROJECT BACKGROUND

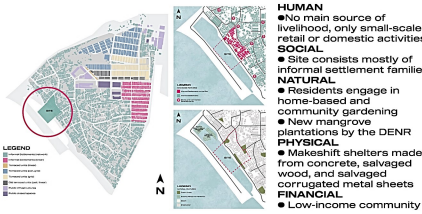
As a result of fast-paced migration into Baseco, most of the houses in the area are improvised and often overcrowded. Without legal tenure, most of the residents in this area do not have access to city services and often cannot save enough to move to formal housing.

In many cases, the government's solution to housing informal settler families is off-site resettlement. However, uprooting these families would have various implications, as these communities are so economically, spatially, and socially integrated with their urban contexts.

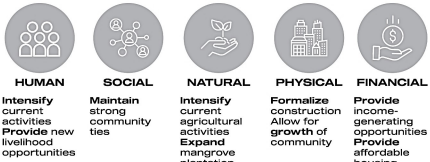
This study aims to develop an on-site resettlement plan for the residents of Baseco Compound that improves their physical living conditions while improving their access to city necessities such as livelihood, recreation, health, and security. This on-site resettlement plan offers incremental housing options to allow for future expansion of the community and commercial, livelihood, and community spaces to support the users' needs and activities.



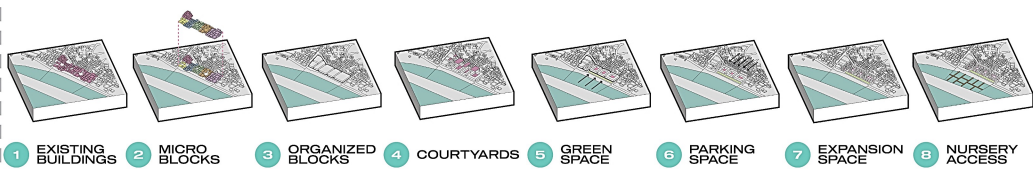
SITE CONDITIONS



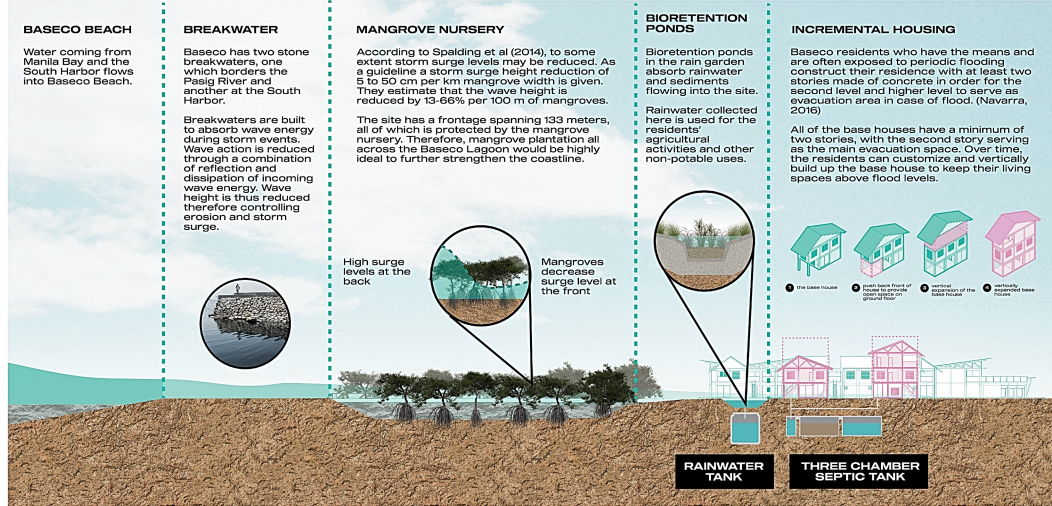
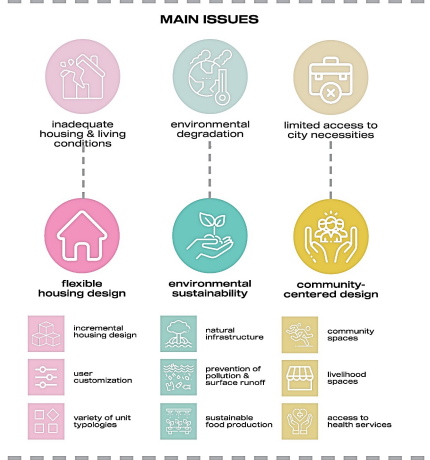
OPPORTUNITIES



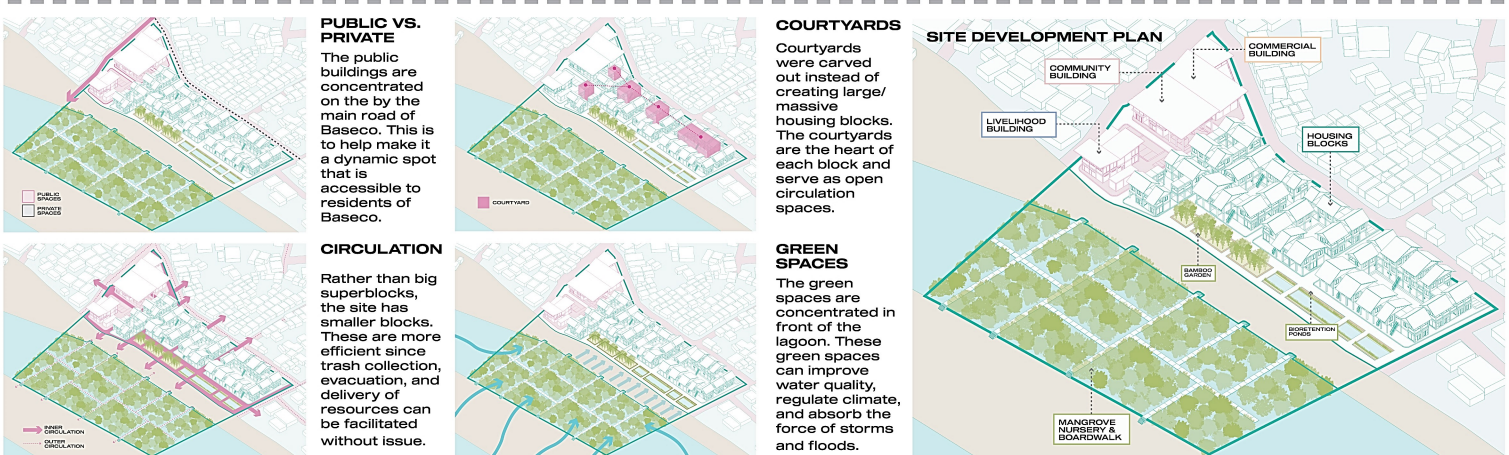
DESIGN MORPHOLOGY



DESIGN CONCEPTS



SITE DIAGRAMS

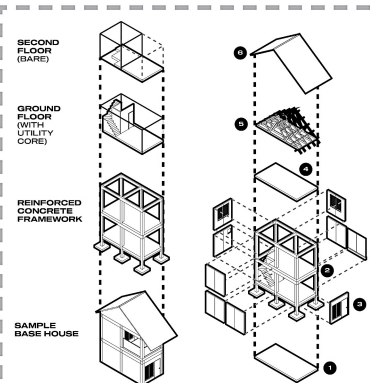
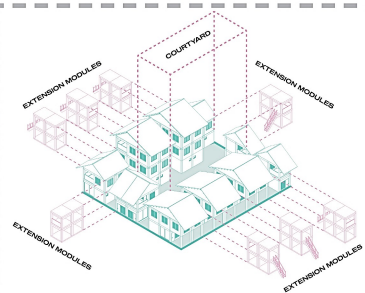




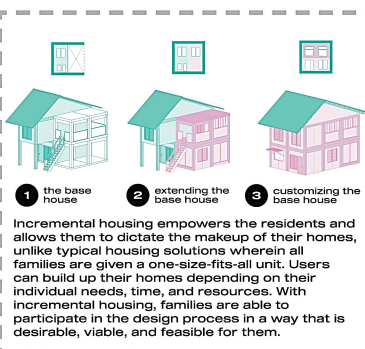
TYPICAL BLOCK

STRUCTURAL DIAGRAM

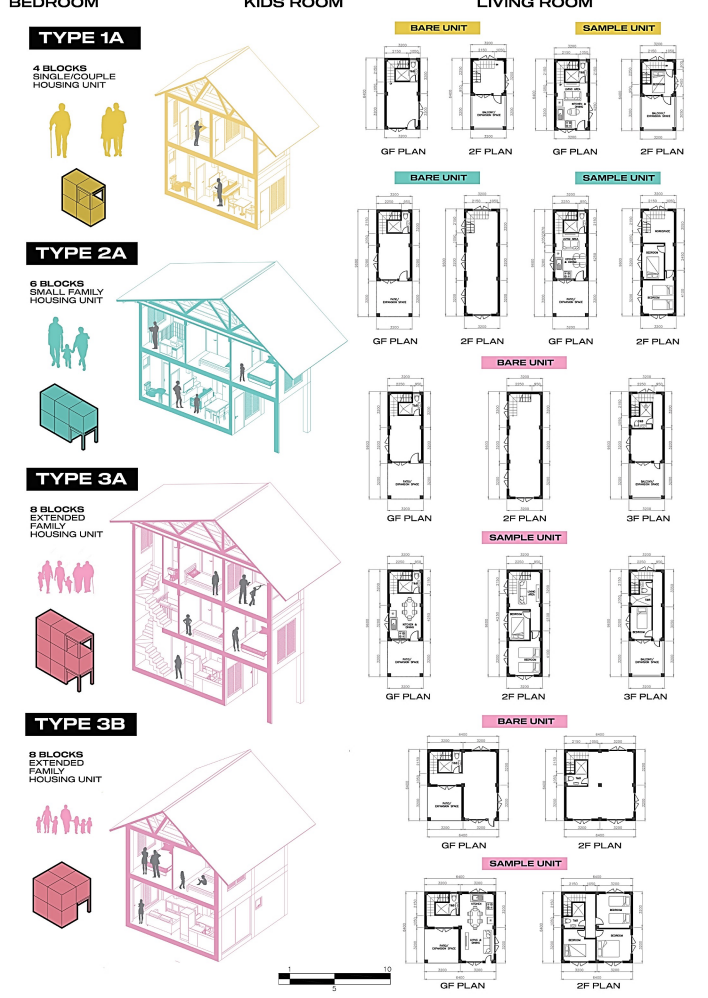
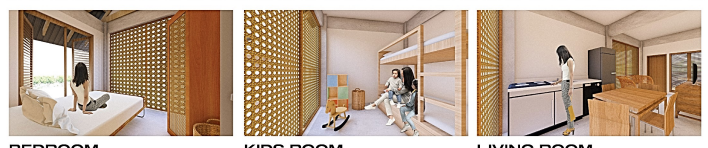
TYPICAL BASE HOUSES



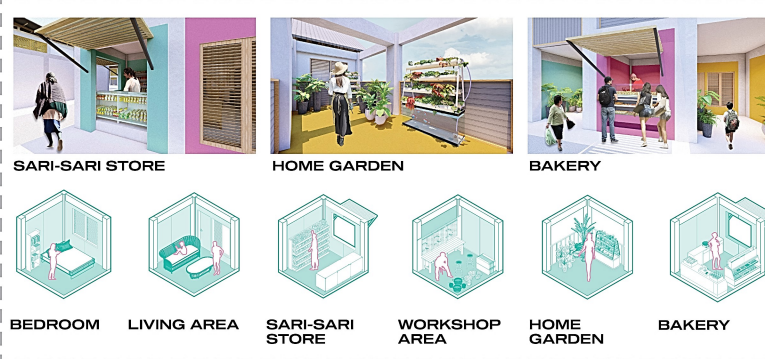
INCREMENTAL PHASES



- 1 REINFORCED CONCRETE SLAB
- 2 REINFORCED CONCRETE FRAMEWORK
The reinforced concrete framework of each base house is provided along with the utility core.
- 3 EPS SANDWICH PANELS
EPS Sandwich Panels can be used for the walls. They are durable, lightweight, and have good thermal and soundproof insulation. They are also cost-efficient, since they do not require any special equipment for installation. These panels can easily be cut, modified, or replaced depending on the user's preference. Alternative materials for the walls and partitions include marine plywood, bamboo screens, etc.
- 4 GYPSUM BOARD
- 5 ROOF TRUSS SYSTEM
- 6 DOUBLE PITCH ROOF



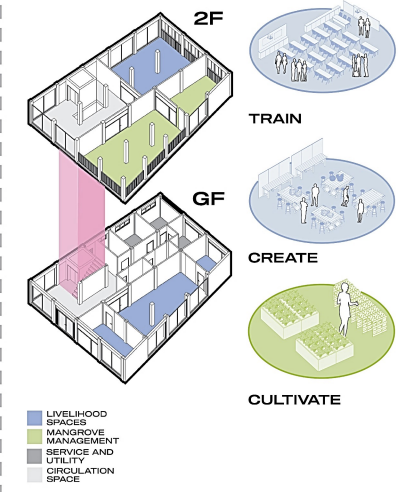
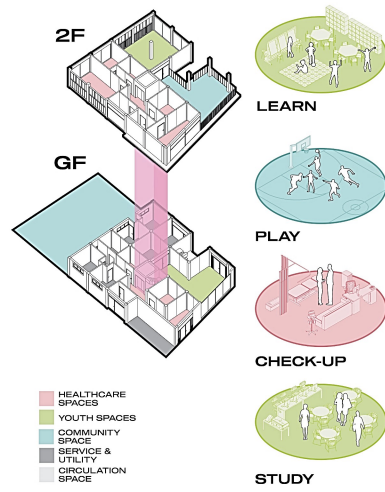
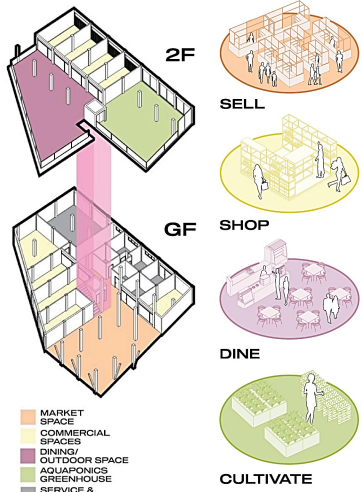
EXTENSION MODULE USES



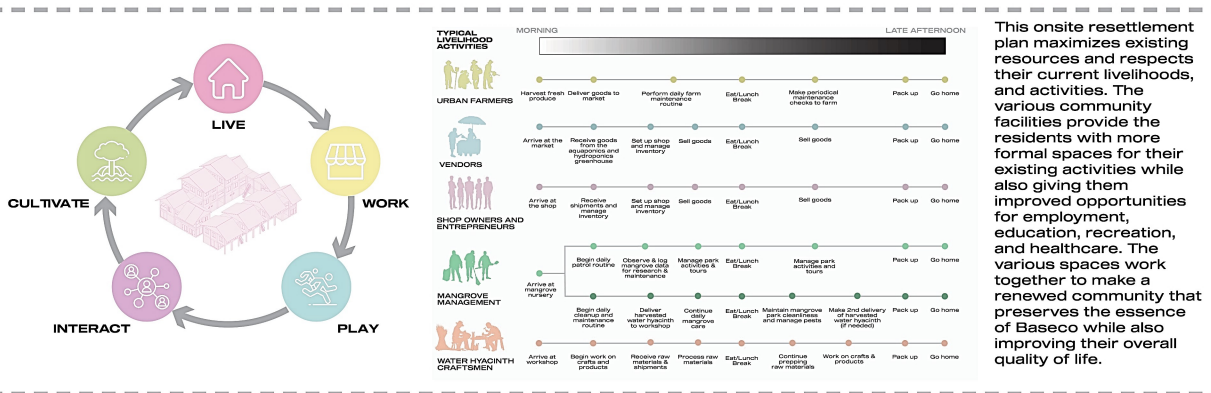
COMMERCIAL BUILDING

COMMUNITY BUILDING

LIVELIHOOD BUILDING



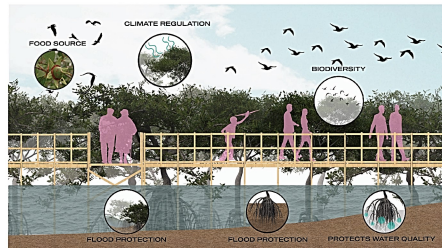
TYPICAL ACTIVITIES



This onsite resettlement plan maximizes existing resources and respects their current livelihoods, and activities. The various community facilities provide the residents with more formal spaces for their existing activities while also giving them improved opportunities for employment, education, recreation, and healthcare. The various spaces work together to make a renewed community that preserves the essence of Baseco while also improving their overall quality of life.

MANGROVE BOARDWALK

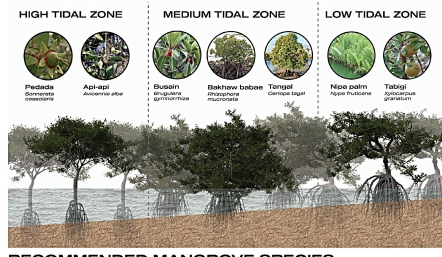
RAIN GARDEN



SOCIO-ECONOMIC BENEFITS



ENVIRONMENTAL SERVICES

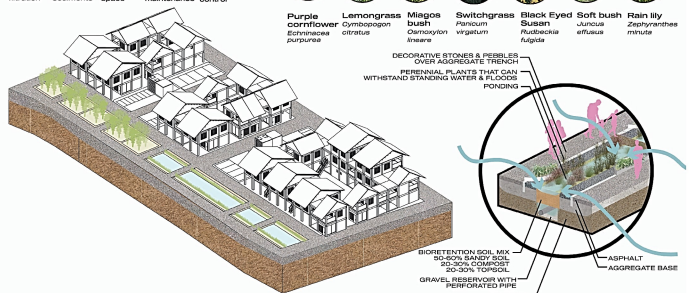


The development also has a mangrove nursery and boardwalk made from bamboo. The mangrove boardwalk can generate educational, research, recreation, livelihood, and even ecotourism opportunities, making it an attractive spot for the residents. The mangrove nursery also serves as a valuable addition to the community since there is a lack of existing green space in Baseco.

BENEFITS & SERVICES



POSSIBLE PLANT SPECIES



The rain gardens have bio-retention ponds which can absorb and filter any remaining rainwater flowing toward the site. This protects the houses in the area while also providing them with more open green space. The bio-retention ponds collect the rainwater in the rainwater storage tank, which is used as a secondary non-potable water source for the resident's agricultural activities and other uses. Next to the rain gardens is the bamboo garden, which provides sun shading and privacy, absorbs carbon in the atmosphere, doesn't require the use of pesticides, and helps inhibit soil erosion. The bamboo planted in these gardens can also be used to build or replace parts of the mangrove boardwalk.

