

Talingap

A Proposed Ecotourism Development of Libunao Protected Landscape
for the Conservation of Tardictic Hornbill
Brgy. Nagculluban, Sinait, Ilocos Sur, Philippines
by Hazel Grace R. Esmino



Political

Libunao Protected Landscape has an area of **46.7 hectares** and is located in **Brgy. Nagculluban, Sinait Ilocos Sur.**



Social

Brgy. Nagculluban has a population of **430** and **household of 130** with the **smallest household size of 4.17 or 4 persons per hectare.**



Legal

People seem to be unaware of the importance of **PA, PA management, PA policies,** and **metes and bounds of the PA.**



Economic

The **endangered and endemic species** can **attract researchers and ecotourism enthusiasts,** which can promote **sustainable ecotourism.**



Technological

Underdeveloped ecotourism due to the **undeveloped site and unpaved roads.**



Environmental

Biological resources in the area are **threatened by illegal activities,** specially the **endemic and endangered species.**

Strengths

SOC. A yearly consumption of free flowing water coming the Libunao Spring is also a manifestation of a **healthy LPL with resources** that can be **benefitted by the communities.**
ECON. The **endangered species** will enable greater efforts to monitor and promote the area in **sustainable ecotourism.**

Weaknesses

ENVI. Biological **resources** in the area which include **endemic species** are **threatened** by **illegal activities** like **timber poaching.**
ENVI. **Limited source of livelihood** can result in **pressure of LPL.**
LEG. The **lack of LGU policy** for LPL protection.

Opportunities

ECON. Promote **tourism products and services** from Libunao Protected Landscape LPL.
ECON. Develop and **promote sustainable ecotourism** for the Protected Area (PA).
TECH. Develop underdeveloped or **unpaved access road** to increase the **potential of ecotourism.**

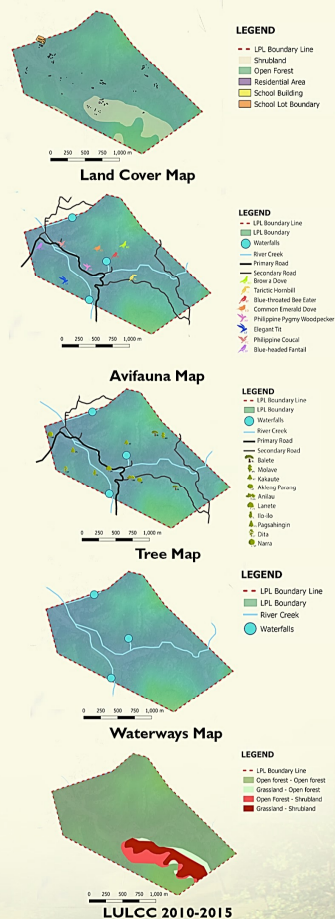
Threats

ENVI. **Pressures in LPL** due to **fuelwood harvesting, timber poaching,** and **upland cultivation.**
ENVI. Migration of birds, specifically **Tardictic Hornbills,** due to **illegal logging activities.**

Vision

Conservation of Tardictic Hornbills and at the same time, giving livelihood opportunities to the residents of the local community and increasing the economic growth of the municipality.

Site Inventory

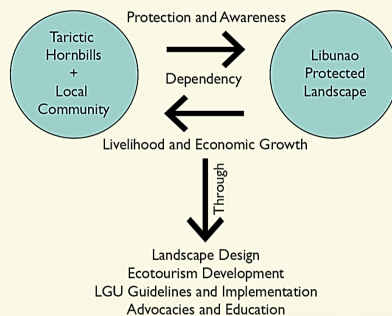


Design Concept

Tali or Lubid (n)

A strong thick cord made by braiding together strands of natural fibers such as hemp or artificial fibers.

Species in the PA including the endangered species, **Tardictic Hornbills, depend** on the **natural resources** inside the PA for their survival. Thus, the concept **"tali"** or rope will be used for the design. Rope can be seen as a **symbol of "dependency"** like how the **communities near Libunao depend** on the watershed to maintain and **sustain their livelihood** and how the different species **depend on the natural resources in the LPL.**



Design Philosophy

EcoEvolution and EcoAdaptation

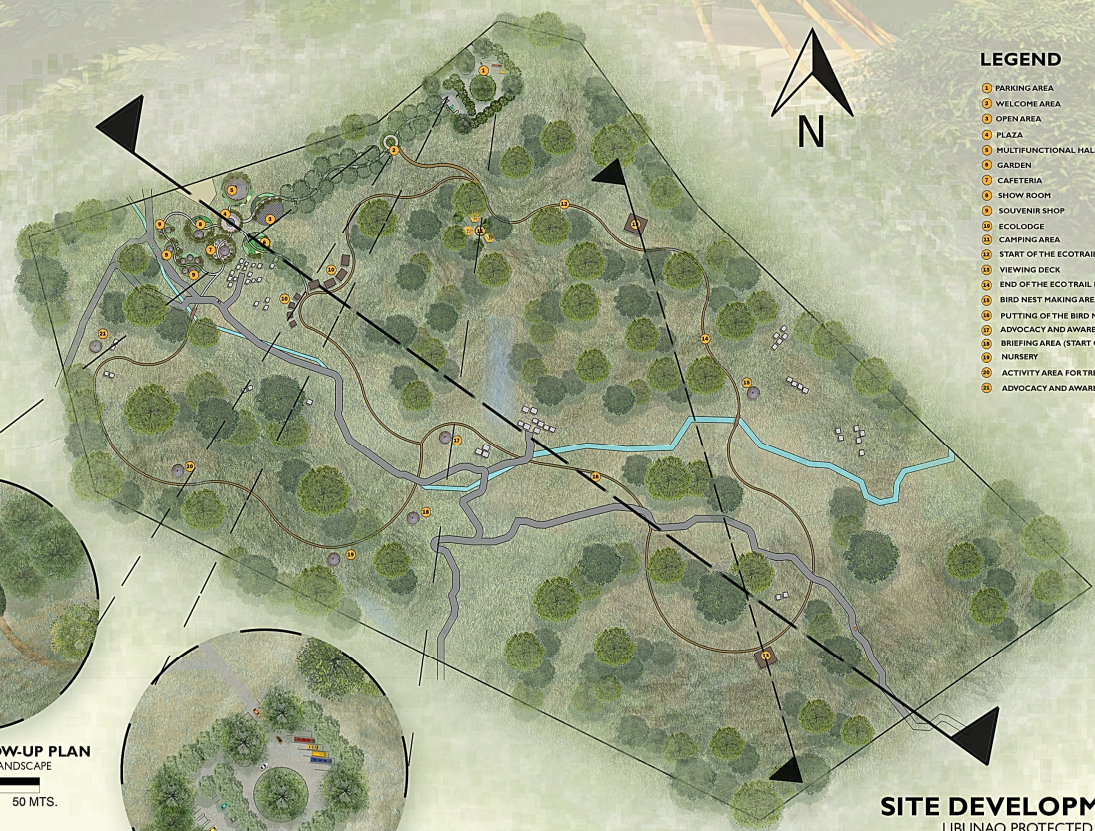
"The environment and the economy are really both two sides of the same coin. If we cannot sustain the environment, we cannot sustain ourselves" - Wangari Maathai.

The **environment** is the **source** of basic **human needs** but human activity may reduce the environment's ability to provide service. On the other hand, humans can also **protect the environment** by planting trees and cleaning. Human and environmental **interactions** go hand in hand. **Protection** of the PA and provision of **livelihood** to the people can be effectively obtained through **ecotourism.**

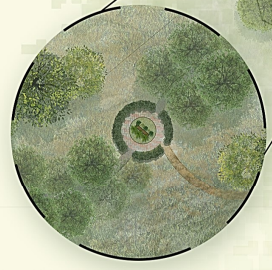


Softscape Palette

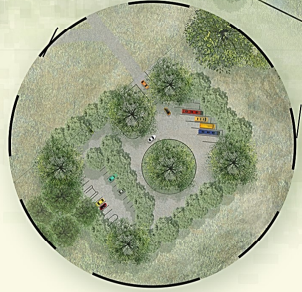
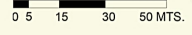




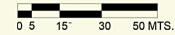
- LEGEND**
- 1 PARKING AREA
 - 2 WELCOME AREA
 - 3 OPEN AREA
 - 4 PLAZA
 - 5 MULTIFUNCTIONAL HALL
 - 6 GARDEN
 - 7 CAFETERIA
 - 8 SHOW ROOM
 - 9 SOUVENIR SHOP
 - 10 ECO LODGE
 - 11 CAMPING AREA
 - 12 START OF THE ECOTRAIL PART I (GATHERING OF TWIGS)
 - 13 VIEWING DECK
 - 14 END OF THE ECOTRAIL PART I (GATHERING OF TWIGS)
 - 15 BIRD NEST MAKING AREA
 - 16 PUTTING OF THE BIRD NEST IN TARTIC HABITAT
 - 17 ADVOCACY AND AWARENESS ROOM ABOUT TARTIC HORNBILL
 - 18 BRIEFING AREA (START OF ECOTRAIL FOR TREE PLANTING)
 - 19 NURSERY
 - 20 ACTIVITY AREA FOR TREE PLANTING
 - 21 ADVOCACY AND AWARENESS ROOM ABOUT TREE PLANTING



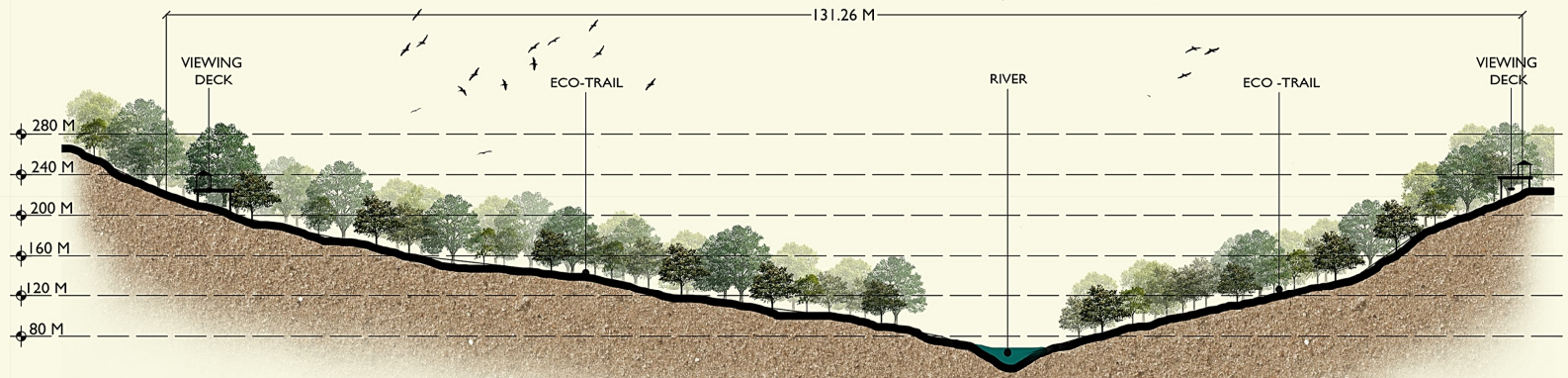
WELCOME AREA BLOW-UP PLAN
LIBUNAO PROTECTED LANDSCAPE



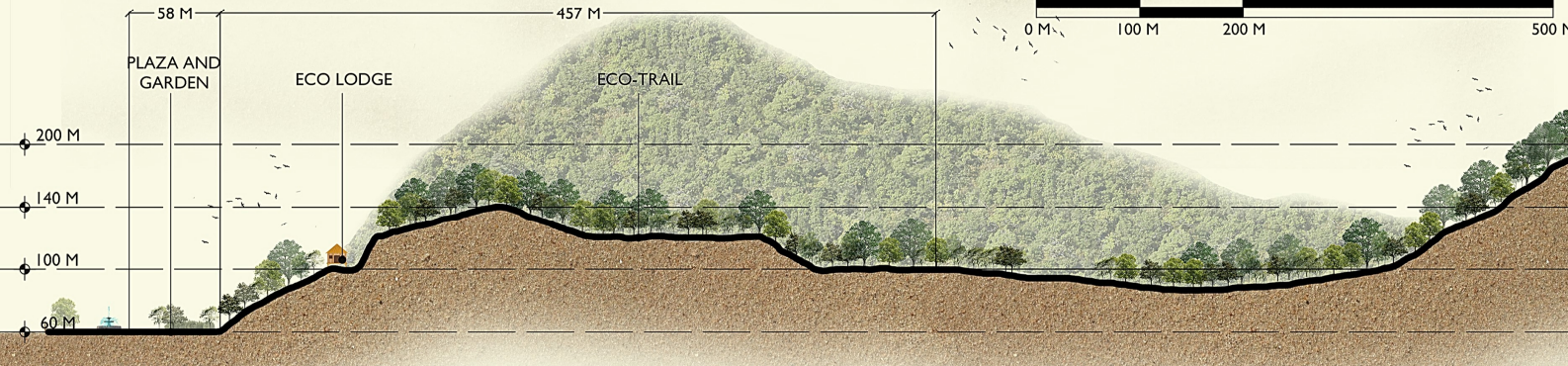
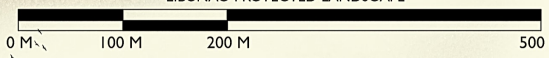
PARKING AREA BLOW-UP PLAN
LIBUNAO PROTECTED LANDSCAPE



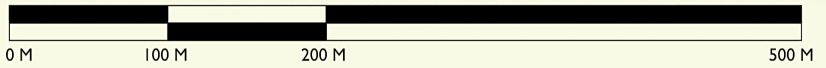
SITE DEVELOPMENT PLAN
LIBUNAO PROTECTED LANDSCAPE

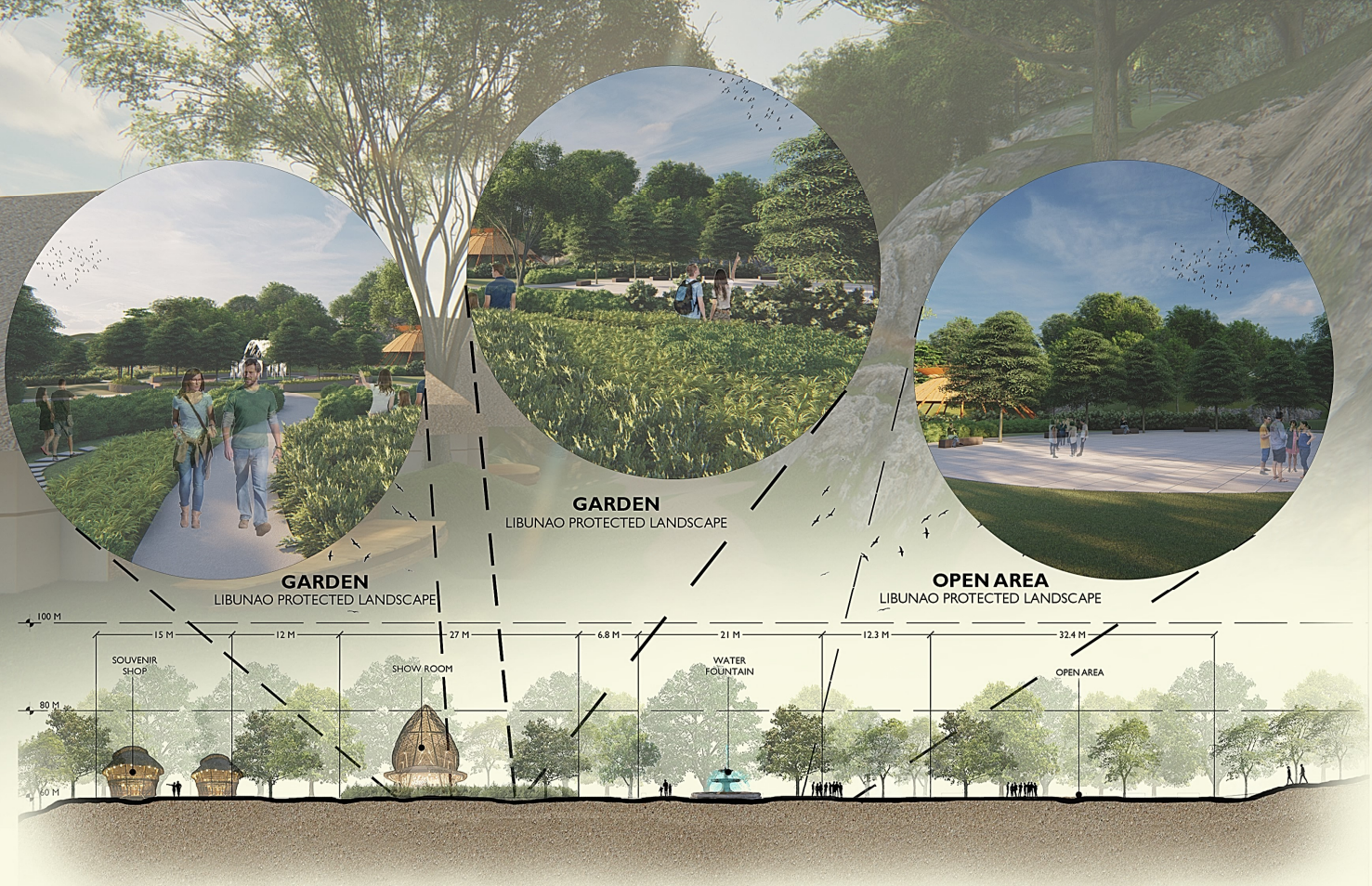


CROSS SECTION-ELEVATION
LIBUNAO PROTECTED LANDSCAPE

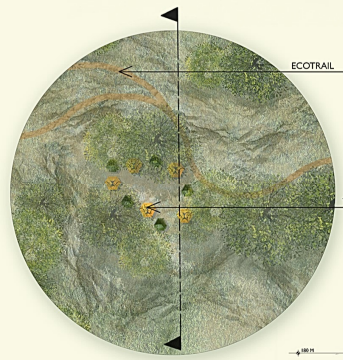
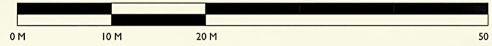


LONGITUDINAL SECTION-ELEVATION
LIBUNAO PROTECTED LANDSCAPE

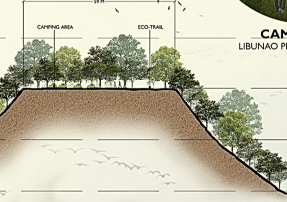




DEVELOPED AREA SECTION-ELEVATION
LIBUNAO PROTECTED LANDSCAPE



CAMPING AREA BLOW-UP PLAN
LIBUNAO PROTECTED LANDSCAPE



CAMPING AREA SECTION-ELEVATION
LIBUNAO PROTECTED LANDSCAPE

0 5 15 30 50 MTS.

An area where the tourists can relax and enjoy the nature overnight. Visitors can experience living in the wild. Hikers and adventurous people will surely enjoy sleeping in tents.



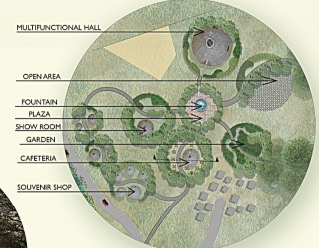
BIRD NEST MAKING AREA
LIBUNAO PROTECTED LANDSCAPE

This is the most important area in the design because this can help the community to protect and conserve tamaric hornbills. After gathering twigs and materials from the ecotrail, the tourists will gather in this activity area and make their own bird nest.



ECOTRAIL
LIBUNAO PROTECTED LANDSCAPE

This area is the start of the ecotrail where the visitors gather their materials for the bird nest making. Materials include the fallen twigs from the trees.



DEVELOPED AREA BLOW-UP PLAN
LIBUNAO PROTECTED LANDSCAPE

0 5 15 30 50 MTS.

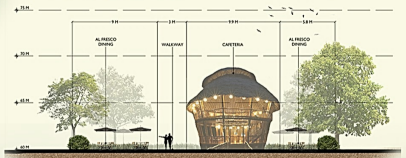
An area where the tourists can enjoy the nature as well as their stay. This area serves as a purpose for tourists to continue coming to LPL because the shops, cafeteria, and the show room provide one after things which can only be found in Ilocos Sur.



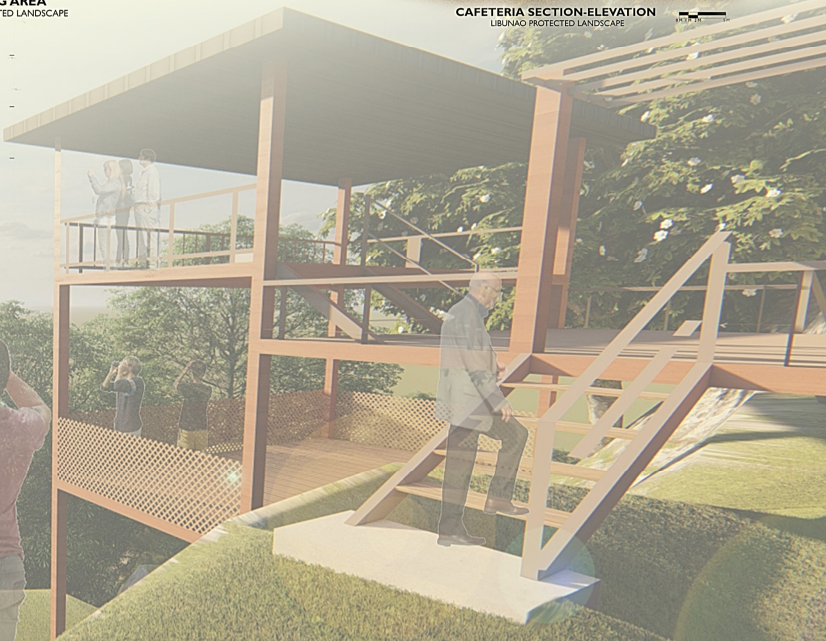
CAFETERIA
LIBUNAO PROTECTED LANDSCAPE



CAFETERIA
LIBUNAO PROTECTED LANDSCAPE



CAFETERIA SECTION-ELEVATION
LIBUNAO PROTECTED LANDSCAPE



VIEWING DECK
LIBUNAO PROTECTED LANDSCAPE

This area allows the visitors to see the whole Protected Area and to see the beautiful landscape in the area. This will also allow them to see the wonderful tamaric hornbills.