

# Fragile Ecology:

## Rehabilitating Former Dumpsites Back Into the Community and Environment

Guinto | Arch 199.2 | Prof. Leonido Gines Jr.

### Problem at Hand

Here in the Philippines, open dumpsites and controlled disposal facilities (CDF) are some of the most ecologically damaging disposal methods and efforts to rehabilitate thus far have been slowly developing.

### Project Aim

This project aims to rehabilitate an existing former dumpsite and mitigate its ongoing pollution and reclaim it for the usage of the nearby communities for their benefit and enjoyment.

### Project Proposal

For this particular project, the site will be divided into three specific areas to be rehabilitated and developed.

As a large site with multiple requirements, various experts and agencies are to be tapped for this development.

### Project Management



### Fragile Environment

The site is the former Pulang Lupa Dumpsite in Las Pinas City.

Close to multiple bodies of water and surrounded by many human communities, the site is an ecologically sensitive one to be rehabilitated.

### Fragile Community

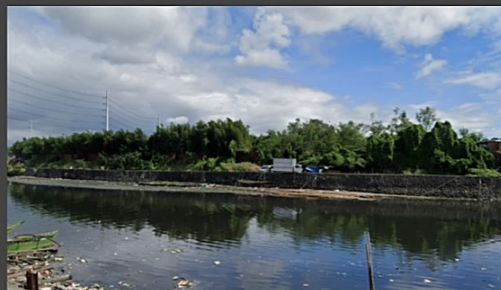
The site is close to many communities such as the Bernabe Compound.

Not only close are these close to an unrehabilitated dumpsite, but also lack community spaces, and are vulnerable to natural calamity.



### Dumpsite Rehabilitation Area

- Environmental & engineering interventions - implementation of existing protocols
- Proposed mitigation systems
- Requires the help of necessary agencies & experts



### Eco-Park & Conservation Area

- Fairly minimal intervention
- Maintenance of existing greener & additional planting
- Addition of foot & cycling paths
- Proposed open-air amphitheater

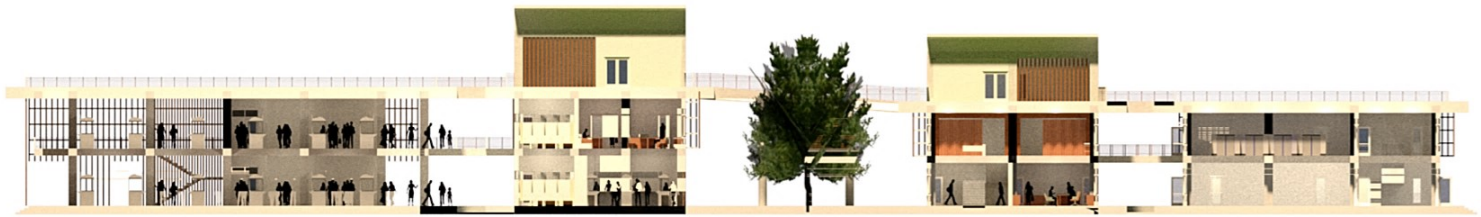
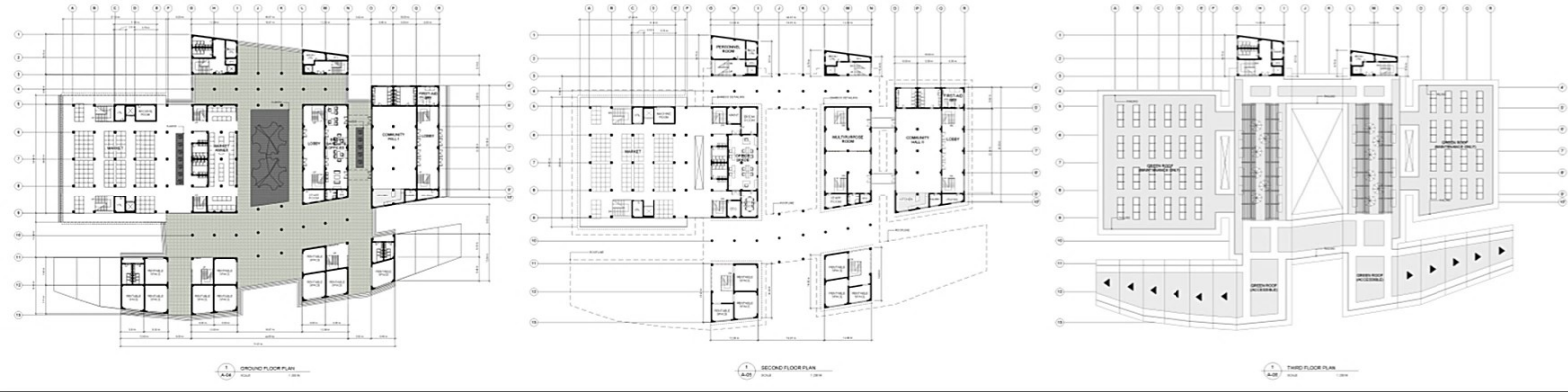


### Community Center Area

- Community Center Complex - main architectural intervention
  - Commercial Center
  - Civic Center
- Other proposed facilities - community spaces







### Commercial Center

- Main Marketplace
- Market Annex & Shops
- Office Space



### Community Complex

- Green Roof
- Bamboo Brise-soleil
- Connecting Spaces



### Civic Center

- Community Halls I & II
- Barangay Satellite Offices
- Multipurpose Room

