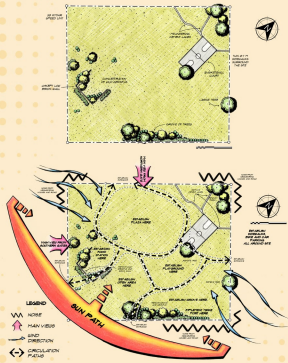


# Hi-Ground Community Park

Elevating Community Living Through Good Design

## Site Inventory and Site Analysis



### Site Vicinity

- Hi-ground is located at Geneva Gardens Neopolitan VII Subdivision — a low density residential area
- The subdivision is surrounded by high-density residential areas: Brgy. Sta. Monica and Phase 8 North Fairview Park Subdivision which have access to the public roads through Geneva gardens. This estimates to a total of 50,000 potential users within 10 minutes cycling distance.
- There are also six-lane roads adjacent to the subdivision: Mindanao Avenue and Don Mariano Marcos Avenue.

## Design Concepts

### Hi-Movement

Space encourages mobility and play

- Man-made elevations and recesses
- Uphill structure gives a sense of 'hiking'
- Playground and sports complex
- Play areas has various play areas with different terrains and features for children
- Sports complex has sports-specific spaces

- Open area and grove
- Areas suited for engagement with nature and various physical activities
- Specific areas for activities such as gardening in the herb garden and greenhouse

### Hi-Access

Space incorporates pedestrian and PWD accessibility

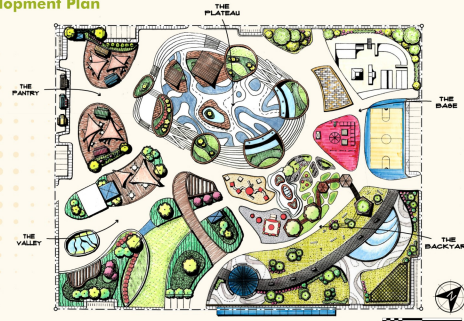
- Pedestrian-and-bike-tailored paths
- PWD-inclusive features
- Ramps and stramps
- PWD-inclusive playground features
- PWD-accessible comfort rooms

### Hi-Impact

Space highlights creative design

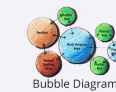
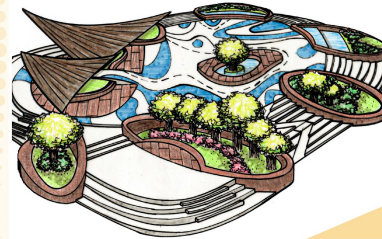
- Curvilinear and circular forms
- Organic shapes that can seamlessly blend into other space suggests fluid motion
- Manmade elevations and recesses
- Creates visual interest and fun design possibilities
- Ties into project name ('high' ground)

## Site Development Plan

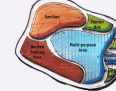


# The Plateau

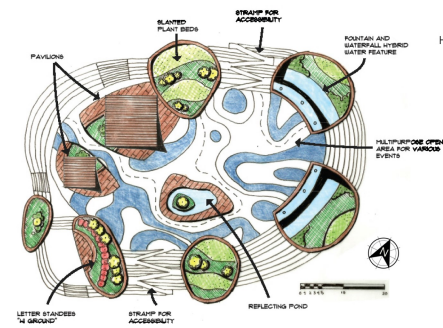
The Plateau is the centerpiece plaza of the site, which boasts great areas meant for a variety of activities, as well as lush plantings in and around the space. The Plateau spans around 4000 square meters and scales up at a height of 2 meters. Stramps, which are the stair-ramp hybrids that you see here, are implemented on each side for easier wheelchair access. The flights of stairs also double as seating and resting areas.



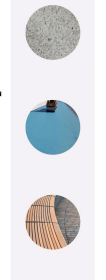
Bubble Diagram



Functional Diagram



Hardscape Materials

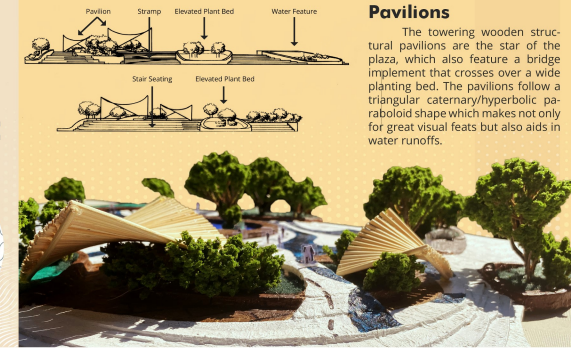


## Twin Waterfalls and Plateau Grounds

On the Plateau's eastern side are twin waterfalls with planters at its bottom. Not just a visual spectacle, but also a cooling implement for the country's tropical heat. And just beside it are the Plateau Grounds, a sprawling open area perfect for any event from cocktail parties to zumba classes.



The pavement pattern of the plaza is based on topographic maps.



### Pavilions

The towering wooden structural pavilions are the star of the plaza, which also feature a bridge implement that crosses over a wide planting bed. The pavilions follow a triangular catenary/hyperbolic paraboloid shape which makes not only for great visual feats but also aids in water runoffs.

## Hi-Ground Community Park

Elevating Community Living Through Good Design



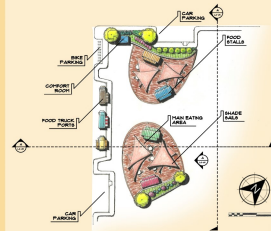
## Hi-Ground Community Park

Elevating Community Living Through Good Design

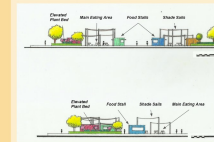


# Pantry

Re-energize and relax with the Hi-Ground Pantry. The Pantry prioritizes food availability and comfort/rest. Two main eating areas with food stalls are provided, along with a food truck port for food variety. Resting areas are given with the tables and planter box seats, equally distributed across the area. The remaining open areas allow maximum user mobility for traffic avoidance and direct entrance points. Large shade sails are also offered to counter extreme sunlight.

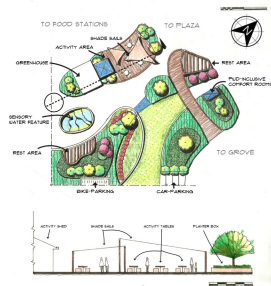
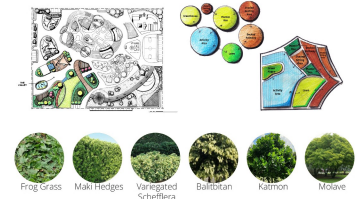


The shade sails are given different heights to influence user movement within the eating areas. Low raised shades are mostly situated at heavy tabled areas to indicate resting or sitting, while the high raised are near the food stalls to direct movement for food purchase.



# The Valley

The valley is an open area of the garden features the airiness and freeing feeling a space can have. It features low-lying plants in raised planting beds and shrubs with occasional trees for shade. It features plants with diverse texture, color, and fragrance as well as an edible garden to appeal to the senses. It also has a greenhouse and activity area where the visitors get to experience deeper human-plant interactions.



The area features a greenhouse and activity area where visitor can have a hands-on experience with plants and the earth.



It also features sensory experiences through varying textures and color in the plants, aromatic plants, a water feature, and set programs in the activity area.



## Hi-Ground Community Park

Elevating Community Living Through Good Design



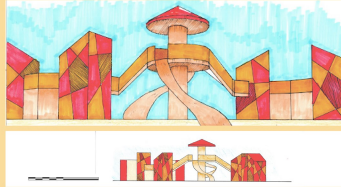


# Backyard

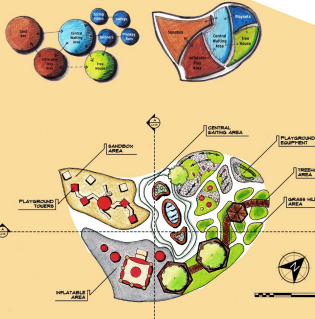
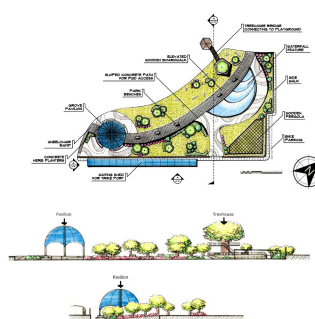
Revitalize and reinvigorate the five senses with the backyard grove. This themed garden surrounds you with a visual spectacle of curated lush foliage. Residents can tend and harvest from the herb gardens at the foot of the pavilion as well as take a stroll through the decked pathway. The smell of the endemic vibrant florals is present all around the space. Playable drums and other instruments on the sprawling lawns and the connecting waterfalls create a dynamic auditory experience.



Have a playful and exciting experience here at the playground area of The Backyard. Equipped with a wide array of playground facilities, look forward to rekindle your youthful heart and reignite the playful kid in you as you have a good time with your family, friends, and even young strangers along the way.



Let the energetic kids play on the playground towers situated on the sandbox area, where they can climb towers, enjoy a good view of the park, go down in style through the slides. If they want more active games, let them play at the inflatable area, where they can jump all the way to their hearts' content.



## 1. LOOK and FEEL zones

The LOOK zone creates visual interest with the flora's variety of sizes, colors, and textures. The movement of the running waterfalls and the sway of the ornamental trees in the wind is soothing to the eyes. Visitors are encouraged to move through the space and feel the unique textures and physical features of the endemic plants exhibited.



GARDEN

## 2. TASTE and SMELL zones

The connection between these two senses can be felt at the herb gardens and along the decked pathway. Residents can choose from several flavor profiles present at the herb gardens. The pleasant and non-overpowering scent emitted by the flowering plants can be smelled throughout the area.

## 3. HEAR zone

Visitors are invited to create and engage in an auditory experience in this area of the park. Wind chimes, kettle drums, hand pipes, and pentatonic tembos are available to play around the space. The sounds of these instruments are interesting, dynamic, and not too loud as to disturb the experience of other users and residents.



PLAY

On to the other side of the playground area, different playground equipment are available for use, while opposite to this, teenagers and adults can chill with their family and friends while lying down on the grass hills area. If you want to relax more, climb up the Tree House area. Cross the wooden bridges, go up the wooden towers, and enjoy a beautiful view of the Hi-Ground Park. Here at the playground area of The Backyard, there are plenty of fun and relaxing activities to do, so be sure to try them all!

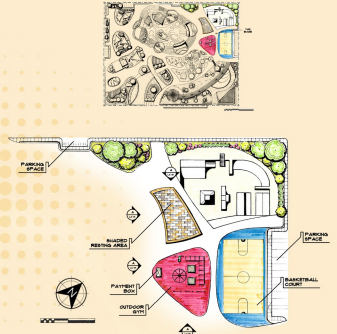


## Hi-Ground Community Park

Elevating Community Living Through Good Design



# The Base



Here we have "The Base", which is the park's Sports Complex. To keep up with the theme of high movement, "The Base" is a space in which people can continue moving with an active lifestyle through sports. The main public attraction is the skate park, made for the healthy and competitive community built from a very active sport. Also included are a basketball court for the most popular sport in the Philippines, and an outdoor gym to support fitness and exercise. But if all of these get exhausting, you can always relax in the shaded resting area.



## Transport Options

- I) Brgy. Sta. Monica and Phase 8 North Fairview Park Subdivision are included in the immediate users of the park as they are within 3 - 12 minutes walking distance to the area and 1 - 4 minutes by bike
- II) The subdivision is directly adjacent to Mindanao ave bus stops and walking distance to Yakal and N. Labayan bus stops along Don Mariano Marcos Avenue
- III) Bike and car parking areas are provided in the park.

## Economic Considerations

- Maintenance ensures that a public park will last a long time while being economical and sustainable. We find it important to also plan for the future of the park.
- Some of the implementable strategies are:
- I) The use of endemic and indigenous plants along with xeriscaping to reduce or eliminate the need for irrigation.
  - II) Renting out food stalls to fund the park cleaners and maintenance
  - III) Free and paid activities in the open garden that will let the users cultivate the plants
  - IV) Renting the open area in the plaza for events and art installations
  - V) Sufficient highly-visible trash bins scattered around the whole park to reduce cleaning cost
  - VI) Installing solar-powered lamps for lighting and solar power panels on shade structures



## Hi-Ground Community Park

Elevating Community Living Through Good Design

