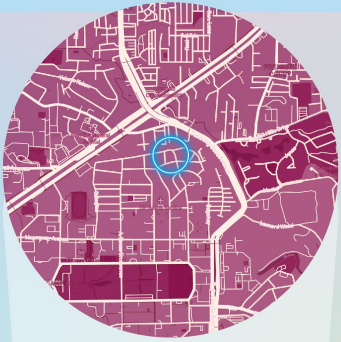




kinderblocks

DESIGN PROPOSAL FOR THE KALINGA DAYCARE CENTER COMPLEX



Juan Luna Street cor. Gomburza St.,
 Area 1, Brgy. UP Campus, Diliman,
 Quezon City

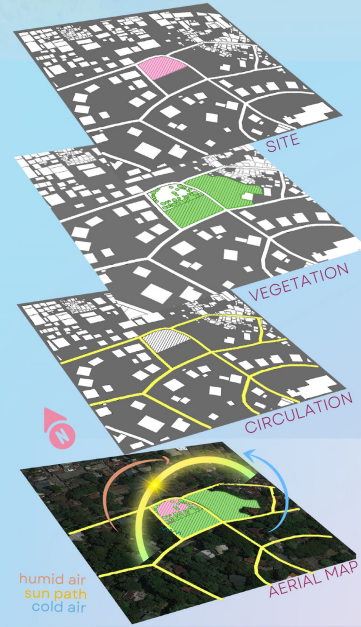
Total Area: 2,390 sqm.

The Kalinga Day Care Center has been watching over the children of UP Diliman staff for 24 years. It serves to guide the development of children aged 1 to 5 years old. This area is their prospect site for their new complex with a focus on outdoor play and learning amidst nature.

The site is located within UP Diliman's residential community Area 1. The vacant lot is currently a DPWH stockyard and is surrounded by private residences and home-owned businesses such as sari-sari stores. The area is predominantly uphill particularly at the streets of Juan Luna and Aguinaldo, although the site is primarily flat. It takes about 15 minutes to walk from here to the original "Pink House" KDCC behind the Church of the Risen Lord, which is also beside the site's nearest jeepney drop-off.

SITE ANALYSIS

Numerous trees create a wide, spreading canopy on-site although THE soil is mostly bare. On the south and east sides of the lot are dense wild forests. Circulation is generally open for cars and pedestrians during the daycare's opening hours, although the roads are one-way and narrow. This may cause traffic concerns during drop-offs. Soil may also possibly be contaminated due to the waste present on site, so the top soil must be removed before any construction. The initial plan based on our site analysis is to place the building at the central western side where it is clear. Some trees and shrubs will also be removed as they are already dead while all existing trees are kept. Differing elevations are dealt with using leveled platforms to emulate a stacked Lego feeling as well as keep it easy to walk on.



humid air
 sun path
 cold air

KDCC'S NEEDS

- 1-storey building for daycare and office areas
- Accommodates 15 staff who commute and 70 children who are dropped off on site
- Can accommodate activities for half day or whole day program setups from 8AM-4:30PM)
- KDCC's Spaces Wishlist:
 - Activ : Playground area
 - Quiet Nature: Composting & Gardening Area, like an edible community garden
 - Creative: Outdoor Art Area for workshops
 - Exploration: Sandbox area, water area, outdoor classroom
 - Social: Platforms, amphitheater, stools and table area for eating

DESIGN CONCEPT AND PRINCIPLES

LEGO BRICKS



REPRESENT

- **creativity in environment**
- **building blocks for development**
- **gender-inclusive toys and play**

... which are all in line with KDCC's values!

TRANSLATED THROUGH

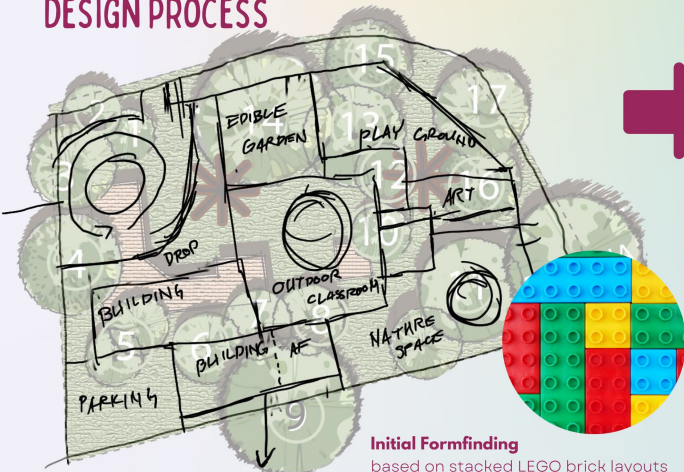
- stacked platforms
- LEGO-like elements and details
- deconstructed LEGO forms
- play modules

hence the concept name:
 kinderblocks = cinderblocks for building

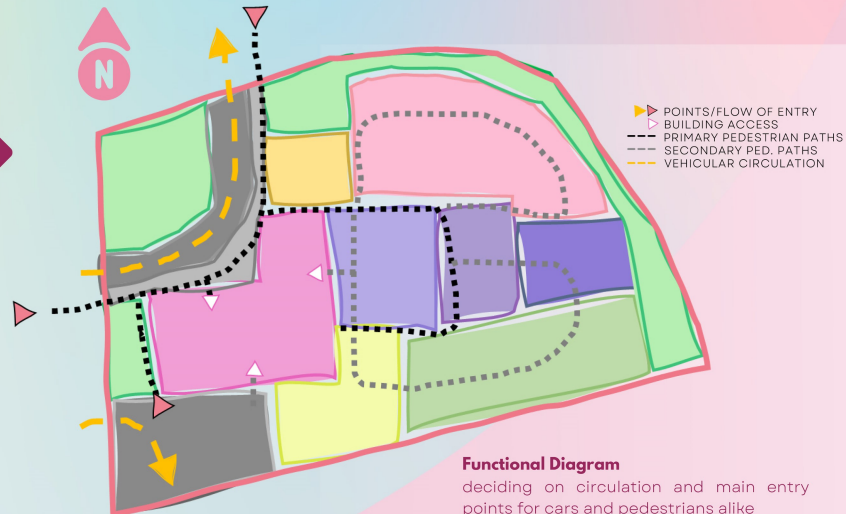
THE PRINCIPLES

- **modular playground**
 allow kids to adapt and transform the site using modules they can use to build their environment
- **promote outdoor learning and play**
 encourage daycare activities in the landscape, with the building serving only as an alternative space rather than the main center of activity

DESIGN PROCESS



Initial Formfinding
 based on stacked LEGO brick layouts



Functional Diagram
 deciding on circulation and main entry points for cars and pedestrians alike

SITE DEVELOPMENT PLAN



0 5 15 35m

PROXIMITY MATRIX

ALFRESCO	
ART AREA	
BUILDING	
DRIVEWAY	
EDIBLE GARDEN	
GARDEN AREA	
OUTDOOR CLASSROOM	
PARKING	
PLAY AREA	

- ◆ ADJACENT
- ◆ NEARBY/CAN BE SEEN FROM AFAR
- ◆ NOT ADJACENT

LEGEND

- A Driveway
- B Edible Garden
- C Playground
- D Outdoor Classroom
- E Open Seating
- F Art Area
- G Nature Area
- H Planting Buffer
- I Al Fresco Dining
- J Parking



KEY AREAS



Entrance Driveway

- Entry Points for Cars and Pedestrian Sidewalk
- 5-Car Parking

The driveway features the front view of the daycare center and is designed in such a way to ease corner street traffic. It is accented by corner planting and its entryways greeted by inclusive, child-friendly signs (e.g. Welcome, Children Crossing). The parking can accommodate the current staff's vehicles, as well as visitors that would drop off or stay for KDCC's events.



Social Area

- Outdoor Classroom
- Art Area
- Seating and Al Fresco Dining

Through the use of deconstructed Lego forms in its elements, this multilevel platform complex is created to hold events, classes, and al fresco dining. The space may have distinct compartments, yet is open enough to accommodate larger gatherings under comfortable shade and many seating options.



Nature Area

- Garden
- Art Area

The nature area is aptly covered by tree canopies and decorated with a variety of shrubs, with some Lego-like sculptures of plants in the mix. The art area features a panoramic view of the garden and complex in an enclosure of Lego brick walls, and has enough space for workshops to encourage art and nature appreciation.



Play and Exploration Area

- Edible Garden
- Playground with Sand Area
- 51 Play Modules

The playground is an open space with bright hues of EPDM rubber flooring to encourage children to use the modules to create different elements like tunnels, walls, platforms, and chairs. It features classic play equipment redesigned to match the Lego theme, and a sandbox shaped like a Lego brick's underside, all amid a backdrop of trees. The edible garden is towards the main entrance for the children to track its progress every time they visit and play.

CHARACTER IMAGES



PLANT PALETTE



HARDSCAPE PALETTE



ADDITIONAL PERSPECTIVES



ENTRANCE DRIVEWAY



Drop-off



Parking



Art Area Seating



Outdoor Classroom



Al Fresco Dining



SOCIAL AREA



PLAY AND EXPLORATION AREA



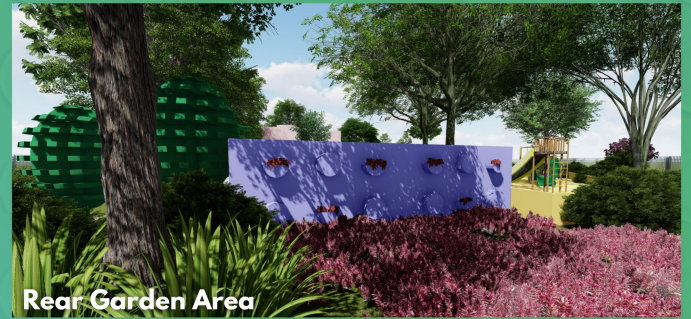
Playground



Edible Garden



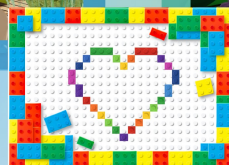
Front Art Area



Rear Garden Area



Main Garden



NATURE AREA