

# HABI

## Proposed Ecotourism Development of Mount Calavite Wildlife Sanctuary Municipality of Paluan, Occidental Mindoro

**Rafael Luis F. Ulaban**  
III-B Landscape Architecture  
UP Diliman College of Architecture

### DESIGN CONCEPT: Habi. Weaving the landscape together

The Iraya Mangyan of the area have a tradition of basket weaving using the Nito forest vines, creating various pieces of artful and functional handicrafts. The design takes inspiration from this conceptually in the weaving together of the different spaces, as well in the materials of the built elements. In order to evoke a local and pastoral feel, in line with the community itself.

#### POLITICAL Analysis

- Three (3) barangays within the Protected Area. (Harrison, Alipaoy, Mananao) mostly Barangay Harrison.
- Managed by a Protected Area Management Board (PABM) of 8 representatives of different groups (DENR, LGU, NGO, IP).

#### ECONOMIC Analysis

- Communities rely on MCWS for timber and natural resources.
- The PABM has allocated tracts of land for the use of local communities for timber production.

#### SOCIAL Analysis

- 18,566 total population. Low population density
- Protected area includes a community of Indigenous people (Iraya)

#### TECHNOLOGICAL Analysis

- Modes of transportation is mostly on bicycles, motorcycles, and tricycles
- Little access to jeeps, with only 15 jeeps in the Municipality as of 2014

#### LEGAL Analysis

- The Protected Area is classified as a "Wildlife Sanctuary". According to NIPAS act, the natural conditions must assure the maintenance of the population of the nationally recognized species (Tamaraw, etc).
- Management Zone guidelines outlined by Protected Area Management Board, to be followed.

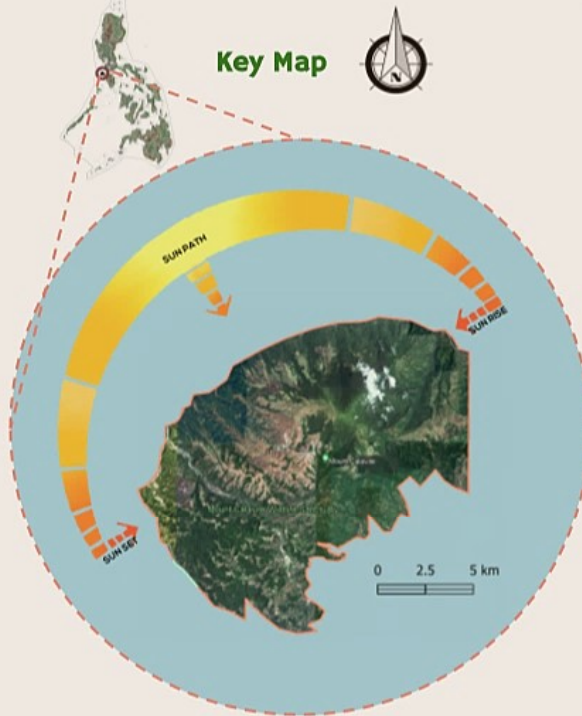
#### ENVIRONMENTAL Analysis

- Terrain is mostly mountainous, with a high risk of erosion in some areas.
- Home to critically endangered animal species.
- Largest percentage (28.67%) of land classified as "Wooded grassland"

### DESIGN PHILOSOPHY: Regenerative Tourism, Visitor Immersion

To bring an authentic and immersive experience of the natural beauty and local culture of the Mt. Calavite Protected Area, with a focus on the local community. To heal the natural environment and ecology through sustainable design. This will entail the use of locally occurring planting materials, integration of conservation practices, and the education and involvement of visitors.

Key Map



### SITE INVENTORY AND ANALYSIS

#### LAND COVER MAP



#### THREAT MAP



#### ZONING MAP



#### EROSION MAP



#### FOREST COVER MAP



### STRENGTHS

### WEAKNESSES

### OPPORTUNITIES

### THREATS

- One of the Key Biodiversity in the Philippines
- Contains unique animal species that can attract attention from visitors and conservation groups.
- Seasonal migration of certain species of birds can give opportunity for seasonal events for enthusiasts.

- Habitat of critically endangered animals needs to be protected
- Relatively low level of infrastructure and public transportation access.
- Locals rely heavily on agriculture.
- No protected area office nearby to MCWS.

- Can integrate the native Mangyan practices in conservation of the protected area.
- Natural Landforms that can serve as ecotourism attractions.

- Large amount of coastline puts the protected area at threat of storms.
- Risk of soil erosion and landslides.
- Unsustainable agriculture and forestry practices.

### DESIGN OBJECTIVES

1

CONNECT POINTS OF KEY INTEREST, BOTH PHYSICALLY AND THEMATICALLY ACROSS THE SITE AS DETERMINED BY THE PROTECTED AREA MANAGEMENT BOARD

2

CREATE SPACES THAT INTERACT HARMONIOUSLY WITH THE NATURAL ENVIRONMENT AND DO NOT TAKE AWAY UNNECESSARILY FROM THE NATURAL ECOSYSTEM.

3

HAVE THE SPACES CREATED SERVE THE INTERESTS OF VISITORS, THE LOCAL PEOPLES, AND LOCAL FLORA AND FAUNA.

### COLOR PALETTE





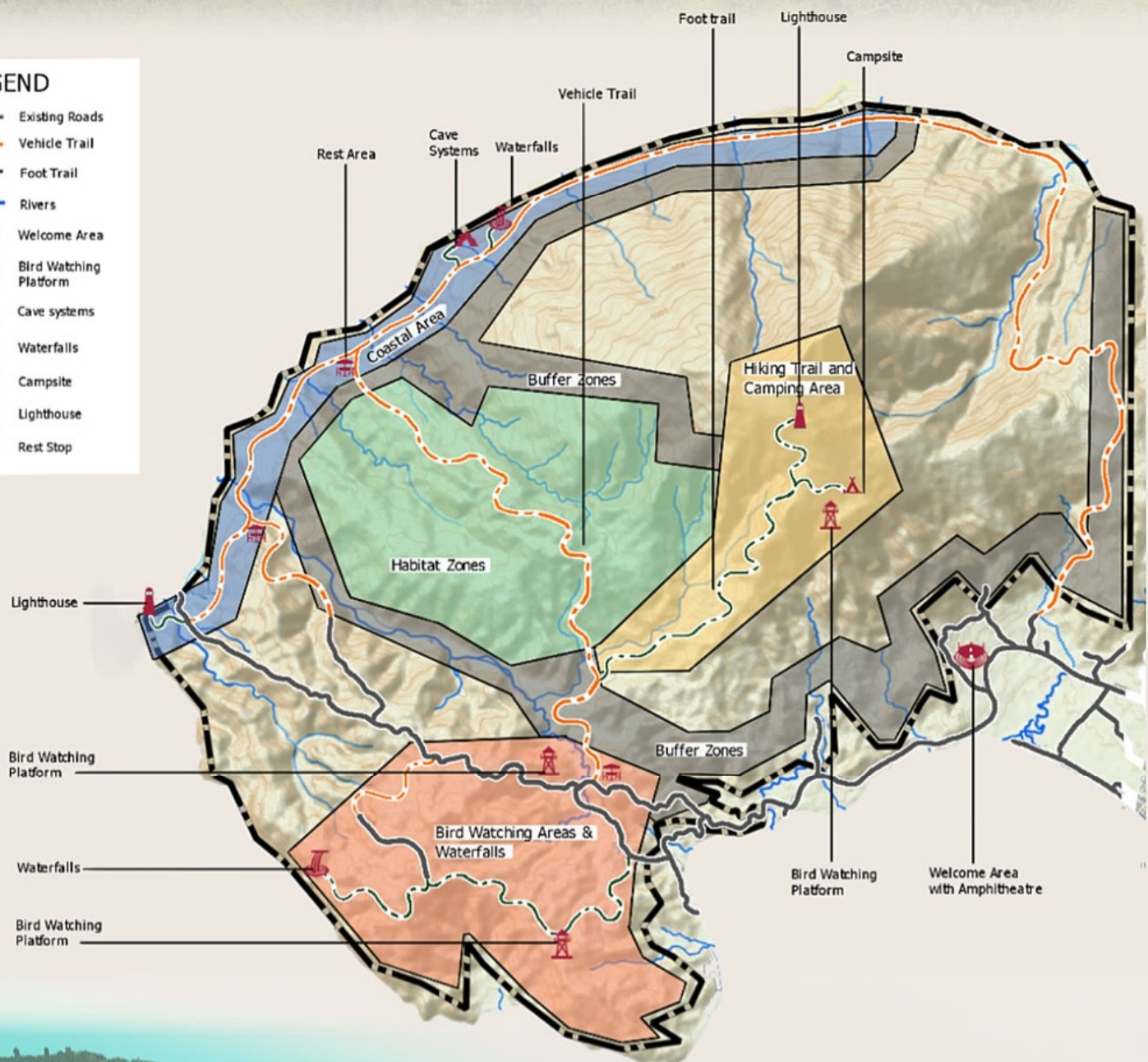
### Key Map



# SITE DEVELOPMENT PLAN

**LEGEND**

- Existing Roads
- Vehicle Trail
- Foot Trail
- Rivers
- Welcome Area
- Bird Watching Platform
- Cave systems
- Waterfalls
- Campsite
- Lighthouse
- Rest Stop

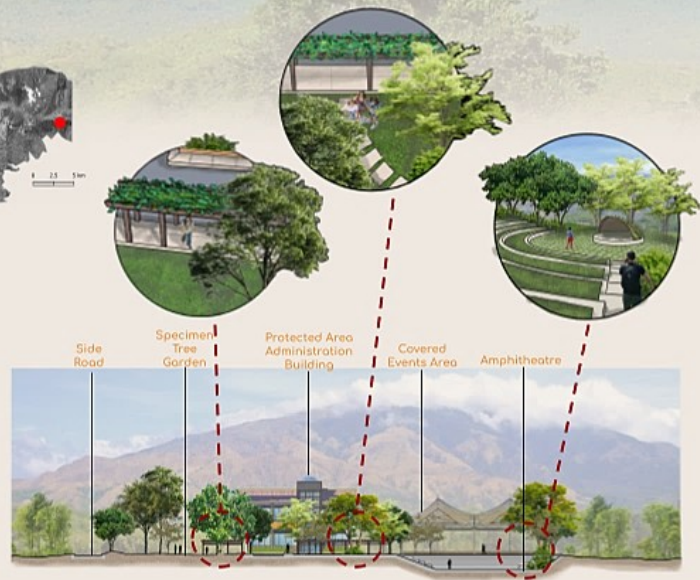
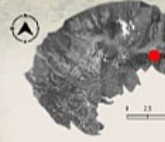


## AERIAL PERSPECTIVE CAMPSITE



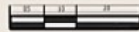


# BLOW-UP PLANS

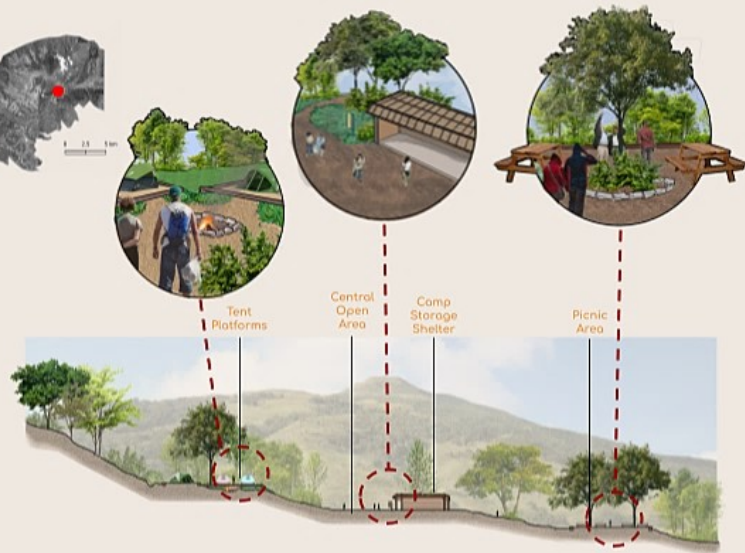
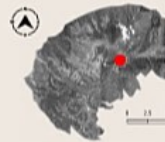


## WELCOME AREA

Contains Protected Area Administration as well as areas for receiving visitors and holding events. Included also is a garden showing important specimen trees on the site.

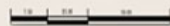


## SECTION-ELEVATION

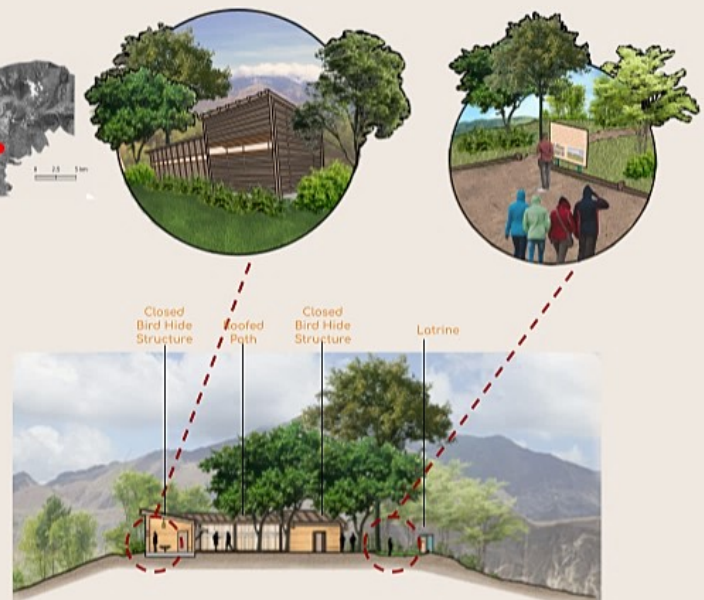
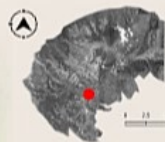


## CAMP SITE

Compsite located in a clearing on the trail heading to the peak of Mount Calovite. Contains Areas for tents, latrines, picnic area, and permanent shelter for harsh weather.



## SECTION-ELEVATION



## BIRD WATCHING AREA

This simple Bird watching area is located on the Northern half of the "Bird watching areas" region indicated in red on the Site Development Plan. It includes two enclosed bird hides with seating, and a screened and roofed walkway connecting them to hide the movement of bird watchers while giving them a good view of the area.



## SECTION-ELEVATION

