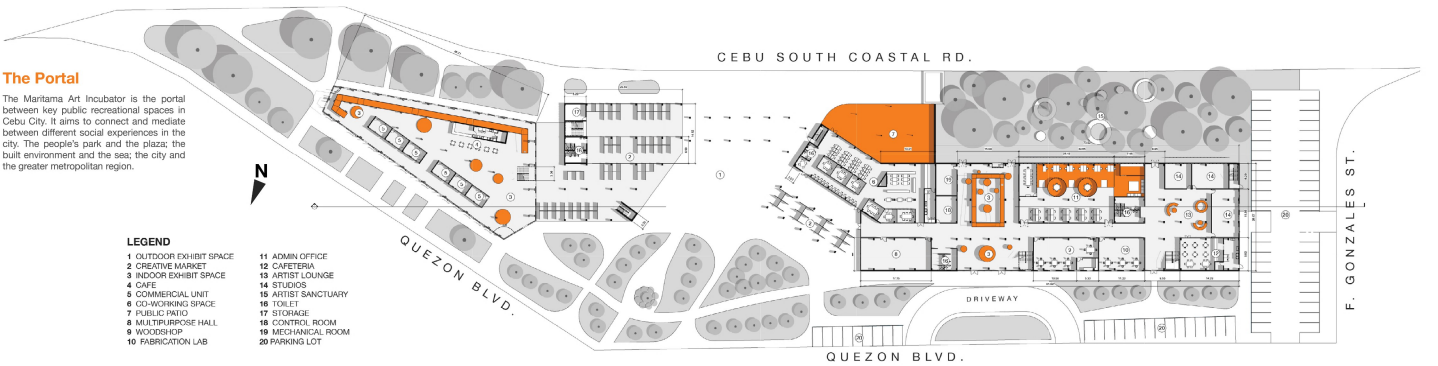


The Portal

The Maritama Art Incubator is the portal between key public recreational spaces in Cebu City. It aims to connect and mediate between different social experiences in the city. The people's park and the plaza, the built environment and the sea; the city and the greater metropolitan region.

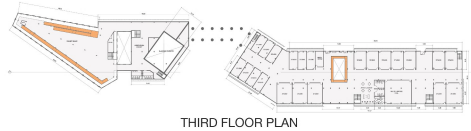
LEGEND

- 1 OUTDOOR EXHIBIT SPACE
- 2 CREATIVE MARKET
- 3 INDOOR EXHIBIT SPACE
- 4 CAFE
- 5 COMMERCIAL UNIT
- 6 CO-WORKING SPACE
- 7 PUBLIC RATIO
- 8 MULTIPURPOSE HALL
- 9 WOODSHOP
- 10 FABRICATION LAB
- 11 ADMIN OFFICE
- 12 CAFETERIA
- 13 ARTIST LOUNGE
- 14 STUDIOS
- 15 ARTIST SANCTUARY
- 16 TOILET
- 17 STORAGE
- 18 CONTROL ROOM
- 19 MECHANICAL ROOM
- 20 PARKING LOT



Design Goals

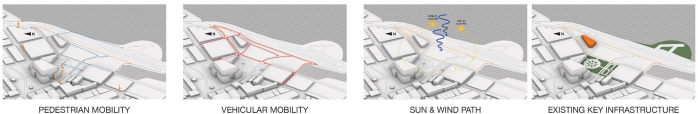
- Stimulate Design Innovation
- Foster Design Collaboration
- Revitalize the Place
- Honor Site History
- Attract Young People



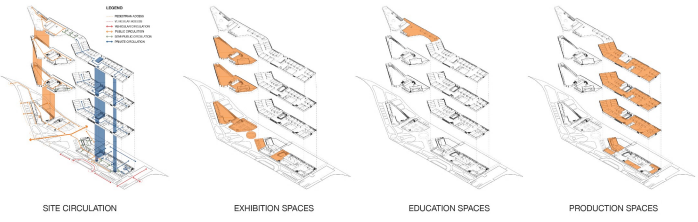
Site Analysis



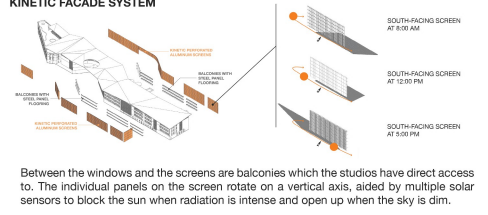
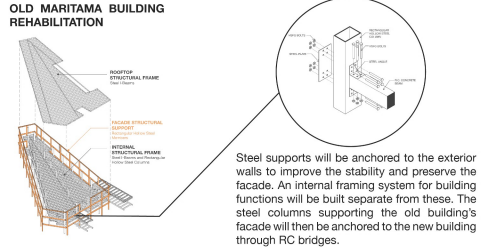
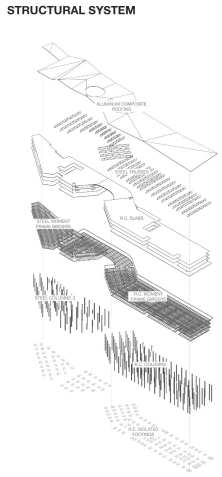
A creative center for the entire Metro Cebu should be located in a business district. The downtown area was selected among 3 potential sites because of the strong capacity of the area to support a knowledge-based and artist-centered infrastructure. It is close to knowledge centers (colleges and universities), has plenty of accessible green spaces, it is located in a historic district that makes it attractive to artists, and it is adjacent to primary roads (especially Cebu South Coastal Road). The last characteristic makes it very accessible to people across the metropolis.



Zoning & Circulation



Construction & Building Systems



While the old Maritama building is reinforced with steel members, the framing system of the new building is predominated with reinforced concrete. RC beams and columns make up the new framing system, with RC slabs for the floors. Supporting the roof on top are steel trusses.



Building Section

