

A PROPOSED TWO-STOREY HOUSE

WITH
FORMAL
LANDSCAPING

LOCATED IN CALAMBA PARK
RESIDENCES, BRGY.
MAKILING, CALAMBA CITY,
LAGUNA, 4027, PHILIPPINES

SECTION A'-a'

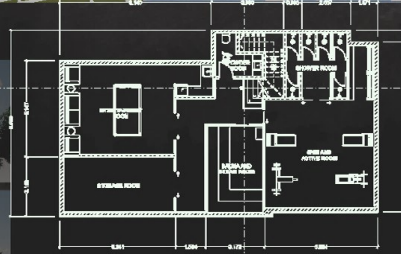
SECTION B'-b'



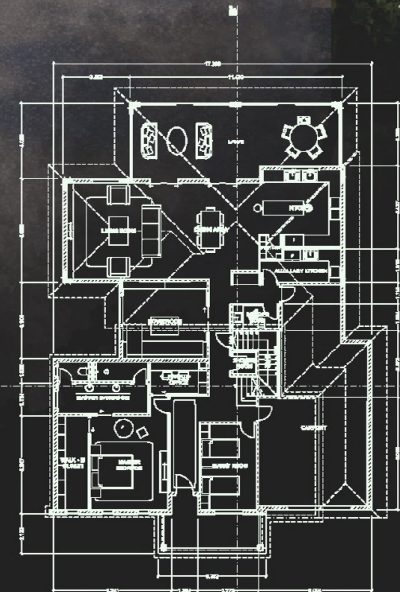
FRONT ELEVATION



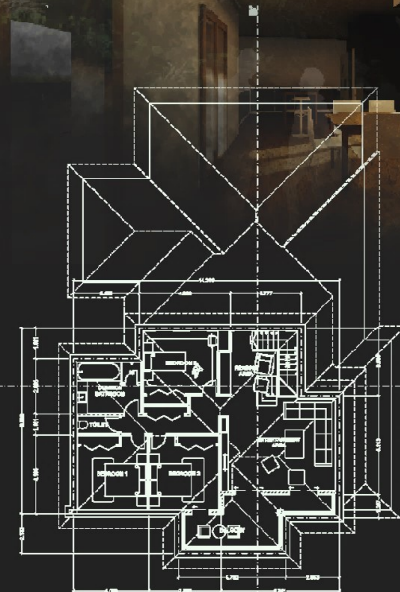
REAR ELEVATION



BASEMENT
FLOORPLAN



GROUND
FLOORPLAN



SECOND
FLOORPLAN