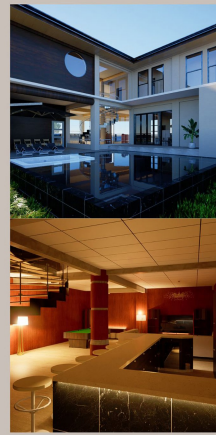


KANTO

An urban two(2) storey, single detached house in a 625m² corner lot located amidst the high-end subdivisions in Makati, Metro Manila



prestige & comfort just around the corner.



ARCHICAD EDUCATION VERSION

Rev#	Chg#	Change Name	Date

Architectural Firm



Jason N. Nieme
Dagupan City, Philippines
jnieme@gup.edu.ph

KANTO
Makati, Metro Manila, Philippines

Drawing Name
Perspective

Drawing Status

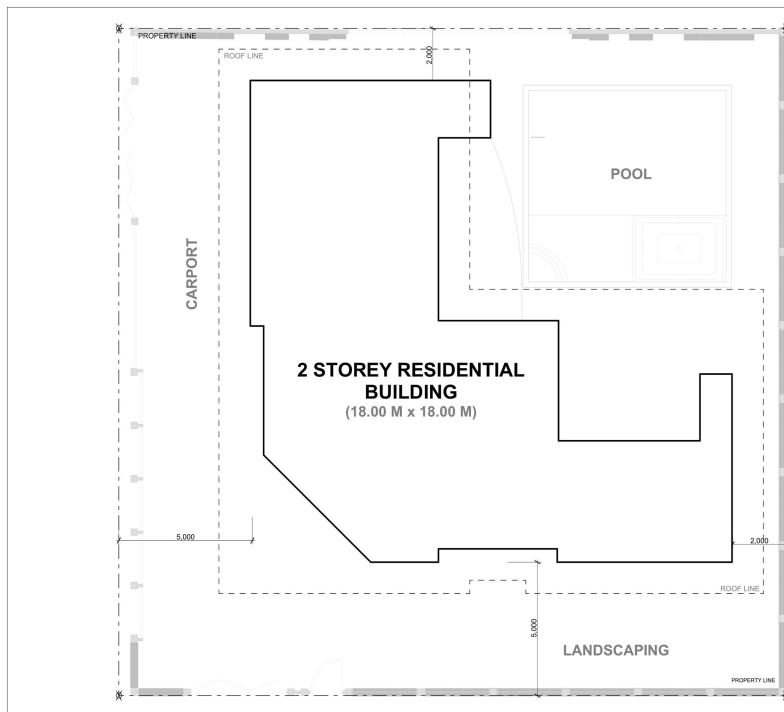
Modified by
Ar. Jo Jerico E. Manalang

Checked by
Ar. Jo Jerico E. Manalang

Drawing Scale
NTS

Layout ID
A.01.2

Revision



ARCHICAD EDUCATION VERSION

Rev#	Chg#	Change Name	Date

Architectural Firm



Jason N. Nieme
Dagupan City, Philippines
jnieme@gup.edu.ph

Kanto
Makati, Metro Manila, Philippines

Drawing Name
Site Development Plan

Drawing Status

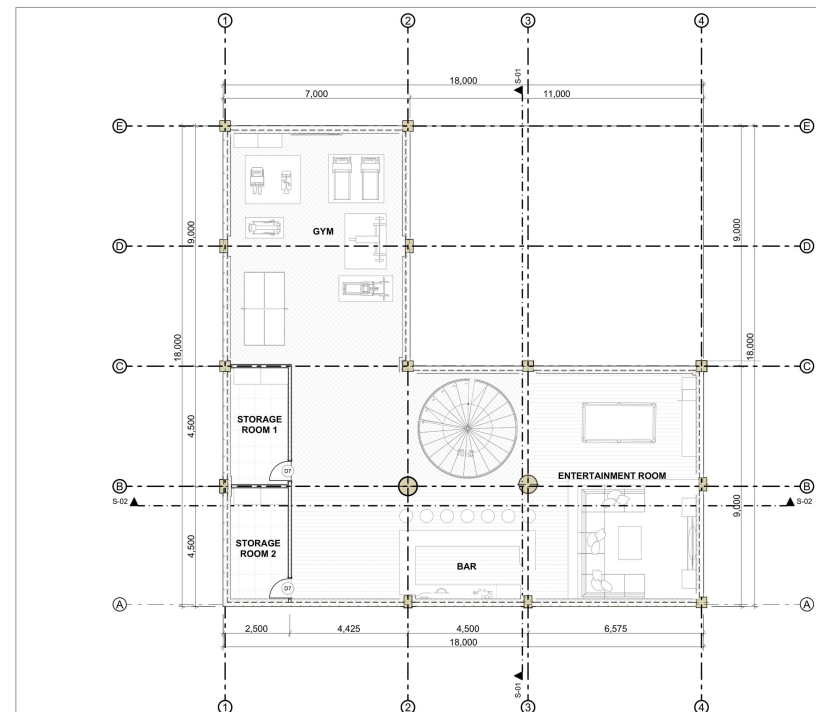
Modified by
Ar. Jo Jerico E. Manalang

Checked by
Ar. Jo Jerico E. Manalang

Drawing Scale
1:100

Layout ID
A.01.3

Revision



ARCHICAD EDUCATION VERSION



Rev#	Chg#	Change Name	Date

Architectural Firm



Jason N. Nieme
Dagupan City, Philippines
jnieme@gup.edu.ph

KANTO
Makati, Metro Manila, Philippines
Floor Area: 225 sq. m.

Drawing Name
Basement Floor Plan

Drawing Status

Modified by
Ar. Jo Jerico E. Manalang

Checked by
Ar. Jo Jerico E. Manalang

Drawing Scale
1:100

Layout ID
A.01.4

Revision

