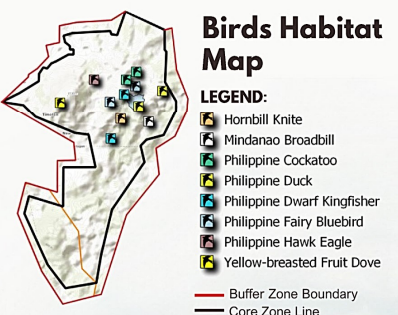
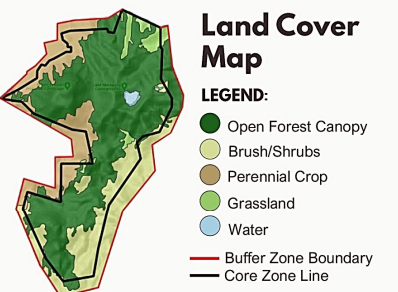
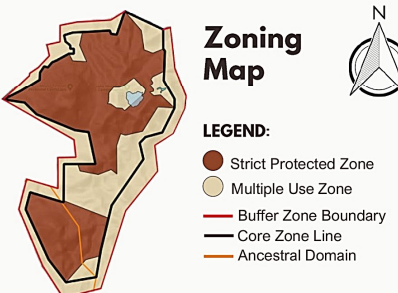


MT. TIMOLAN PROTECTED LANDSCAPE ECOTOURISM PARK

A proposed ecotourism forest park valuing the avifauna of Mt. Timolan Protected Landscape in Zamboanga Del Sur



SITE INVENTORY & ANALYSIS



POLITICAL

- Mt. Timolan Protected Landscape (MTPL) is a protected area under ENIPAS that covers a total area of 2,690.19 hectares located in Zamboanga Del Sur.



ECONOMIC

- The residents rely on the natural resources of MTPL
- There is a high incidence of poverty among the occupants in the buffer zones.



SOCIAL

- The Subanen are the indigenous people in MTPL's lowland. Majority lived in San Miguel and Lapuyan.



TECHNOLOGICAL

- Enhancement of surveillance using new technologies (remote sensing services, CCTV, drones, sensors, etc.)



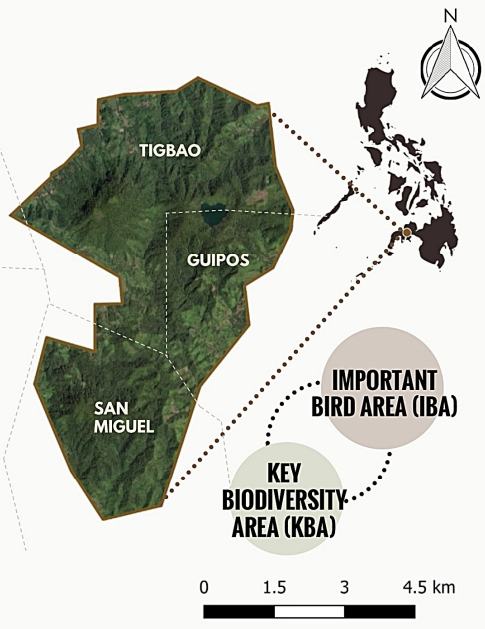
LEGAL

- It was formally known as Zamboanga Del Sur Provincial Park, but its name was changed after Presidential Proclamation No. 354 on August 14, 2000



ENVIRONMENTAL

- MTPL is one of the countries Key Biodiversity Area (KBA) and Important Bird Area (IBA) due to the area's rich faunal endowment.



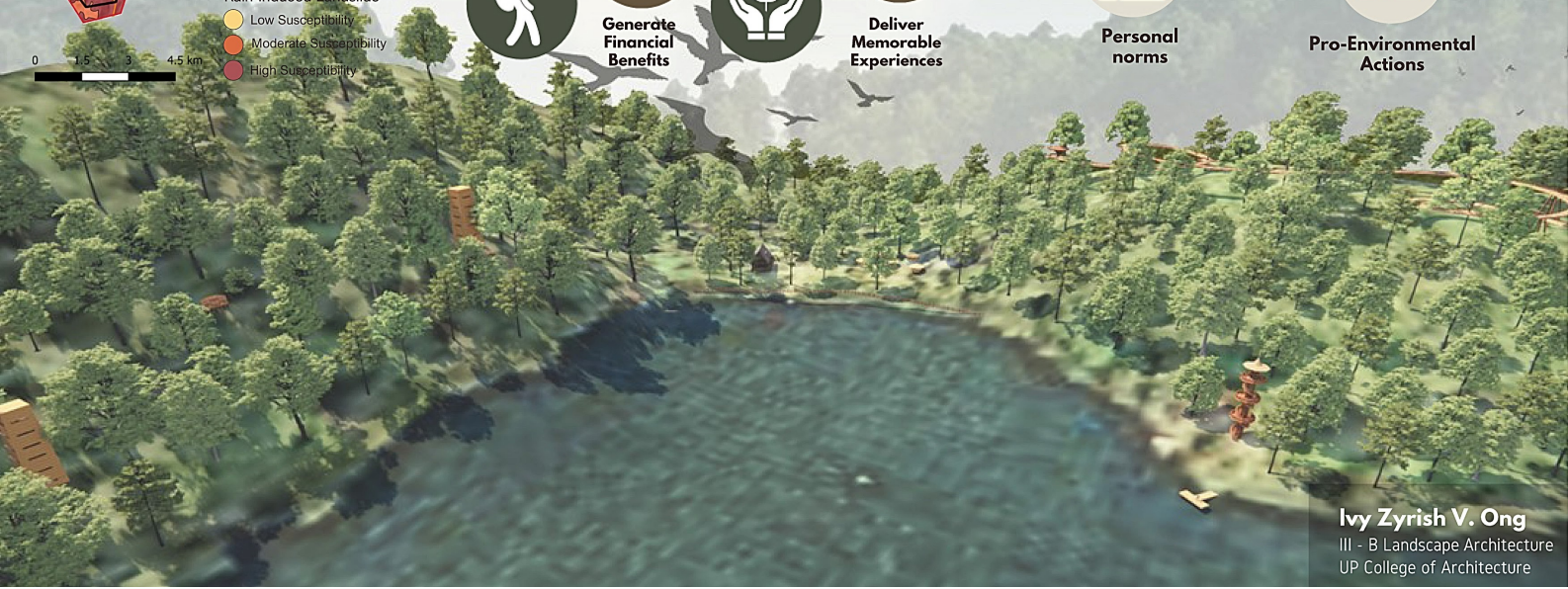
S	W	O	T
<ul style="list-style-type: none"> EN: MTPL has high level of biodiversity and rich avifauna species. ECO: Lake Maragang is a well-known ecotourism site in the area 	<ul style="list-style-type: none"> ECO: Few livelihood opportunities for the adjacent communities of MTPL. L: Poor implementation of regulation of activities in the area. Lack of enforcement of solid waste management law. 	<ul style="list-style-type: none"> ECO: The MTPL have high potential ecotourism value. EN: Lake Maragang provides opportunities for recreational activities. It also provides panoramic views and sceneries. 	<ul style="list-style-type: none"> EN: The Timol, local bird in MTPL is classified as a 'Near Threatened' species Illegal extraction of resources still prevalent practices due to high incidence of poverty of residents.

DESIGN CONCEPT TIMOL

The design take inspiration from 'Timol', the Subanen term used for Philippine Fairy Bluebird (*Irena cyanogastra*), which is a flagship species of MTPL. It is also where the name of the mountain "Timolan" derived its name. By using this concept, it promotes awareness on various bird species on MTPL, and their importance on its biodiversity.

VISION An ecotourism forest park that uses sustainable designs to appreciate the avifauna in the park while helping generate revenue for the locals.

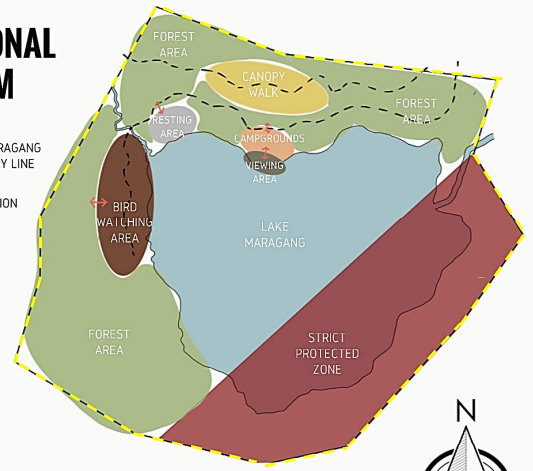
THEORETICAL FRAMEWORK



FUNCTIONAL DIAGRAM

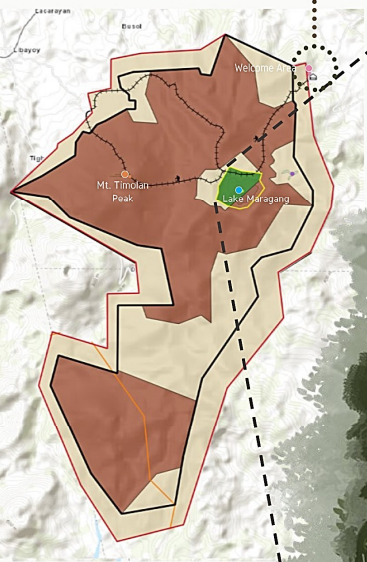
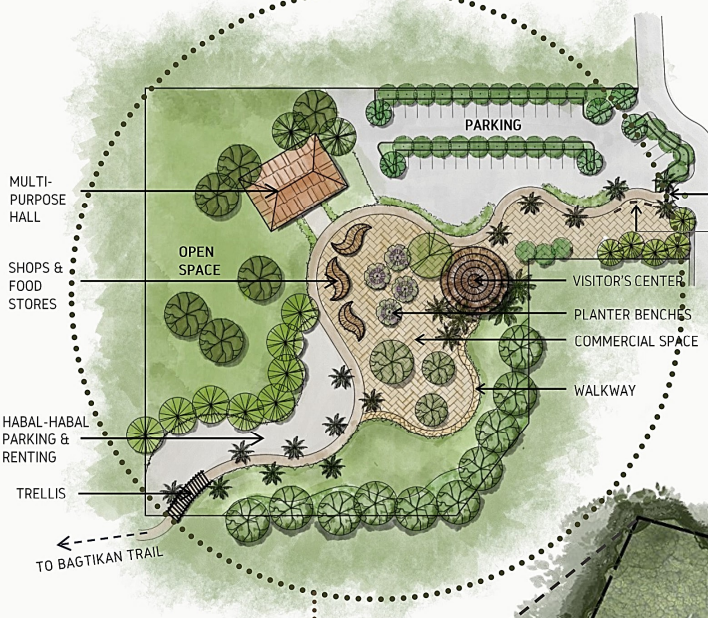
LEGEND:

- LAKE MARAGANG BOUNDARY LINE
- PRIMARY CONNECTION



WELCOME AREA

0 5 20 60M
SCALE: 1: 700MTS.



Mt. Timolan Protected Landscape



0 1 2 3 4 5 km

SCALE: 1: 70000MTS.

LAKE MARAGANG

LEGEND:

- A BAGTIKAN TRAIL
- B CANOPY WALK
- C FOREST AREA
- D EXISTING ECOLOGDE & RESTROOM
- E BIKE/HABAL HABAL PARKING
- F COTTAGES
- G BIRD SCULPTURE SIGN
- H BRIDGE
- I VIEWING DECK
- J CAMPGROUNDS
- K NATURAL TERRACE
- L LOOKOUT TOWER
- M BIRD HIDE
- N BIRD WATCHING TOWER

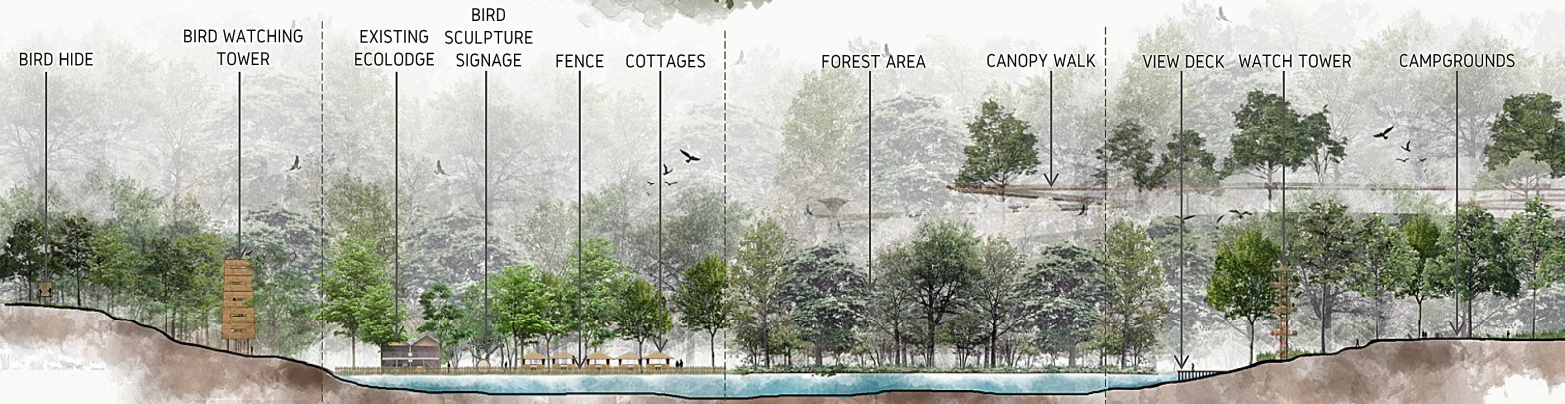
SITE DEVELOPMENT PLAN

Recreation Zone: Lake Maragang

0 50 150 450 M

SCALE: 1: 3000MTS.

SECTION-ELEVATION

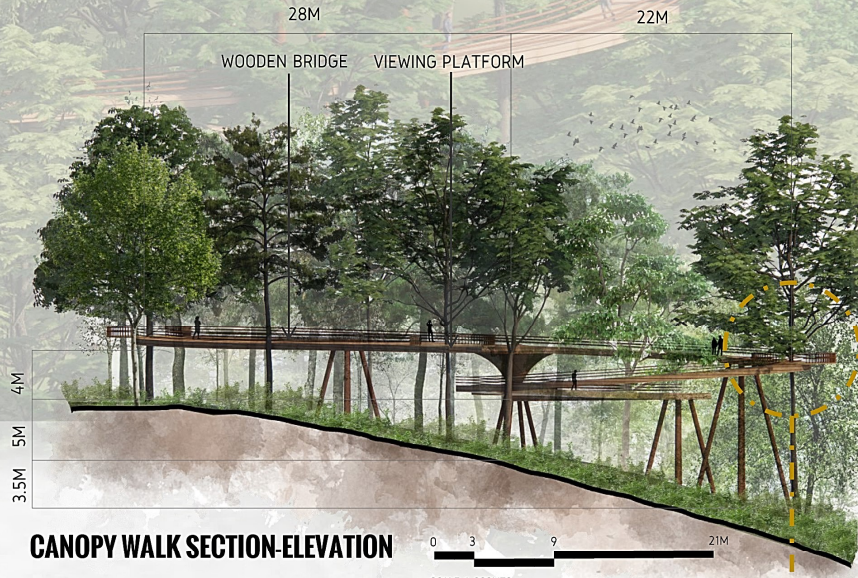
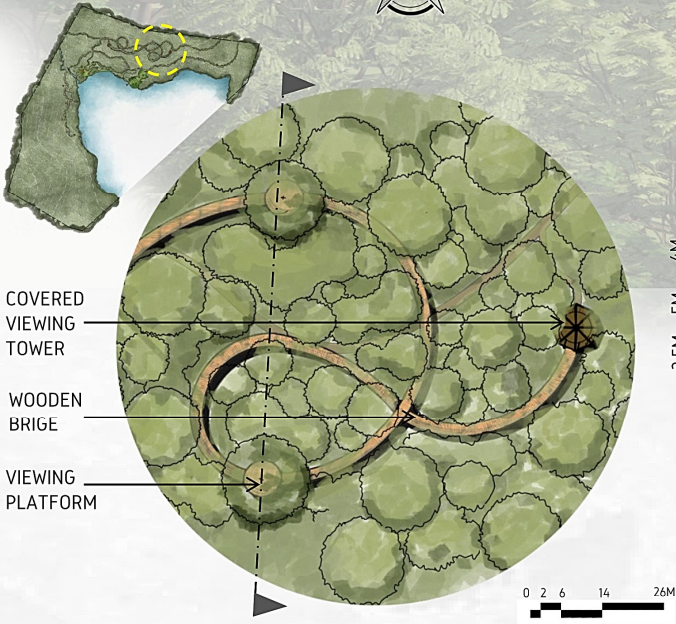


MT. TIMOLAN PROTECTED LANDSCAPE ECOTOURISM PARK
Valuing the Avifauna of MTPL

0 5 20 50 95 M

Ivy Zyrish V. Ong
III - B Landscape Architecture
UP College of Architecture

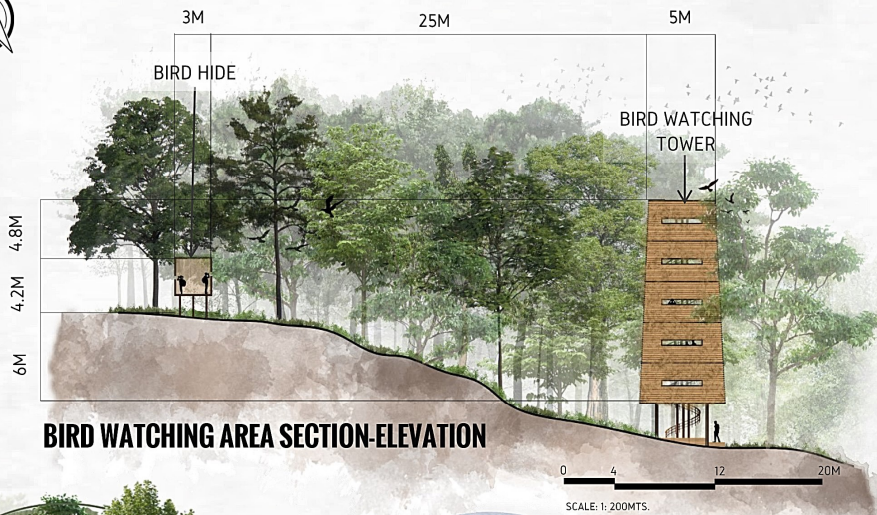
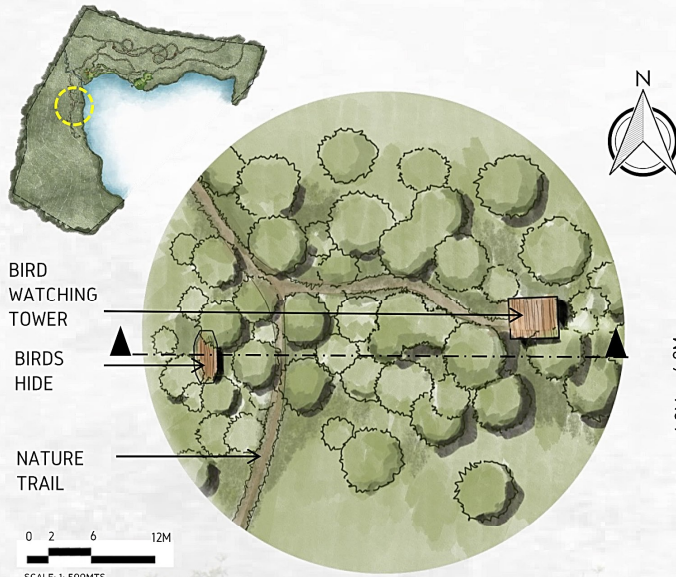
Blow Up Plans



CANOPY WALK SECTION-ELEVATION

CANOPY WALK

A 2-layered meandering walk with viewing towers in between to appreciate the different birds and trees around the area. This is for recreation and educational tours.



BIRD WATCHING AREA SECTION-ELEVATION

BIRD WATCHING AREA

Bird watching area consists of hiding structures where the users can hide while viewing.



BIRD HIDE

BIRD WATCHING TOWER