

# A Vocational Education and Livelihood Start-Up Facility For Communities by the Manila Port

Pastor | Arch 199.2 | Prof. Leonido Gines Jr.

## Background of the Study

Globalization refers to the process by which the unrestricted exchange of ideas, goods, and capital across international borders results in the integration of markets and societies around the globe. (IMF Staff, 2002) This opening of economies has contributed to the rise of emerging and developing economies whose citizens are reaping the benefits of opening up their markets to trade and investment. However, despite the positive effects of globalization, there is concern about a rising inequality, with the ever-widening gap between the formal and informal sectors as groups of people are left out from the global networks.

In the city of Manila, the Port Area is a paradoxical symbol of the contrasting images of the Philippines' primary gateway for domestic and international trade and commerce right next to the marginalized communities of Tondo in its vicinity. The competitive port is a global hotspot where economic development is concentrated and fast-paced, yet the effects of the growing economy have yet to be apparent within its neighboring communities. Prevalent social issues such as poverty, inequality and unemployment prevent the even distribution of wealth to a wider base of the population.

## Problem Statement

Resilient skills for sustainable livelihoods are essential for communities to advance in social & economic status. This may be developed and achieved through both vocational education and practical work application. However, existing local architecture has not provided for such a transitional system, and there is a need for spaces that can accommodate the combination of functions for training and work that will help the members of the community transition into the global economy and society.

## Aspects of Globalization

The project is founded on three aspects of globalization that influence the activities near the port: Global Trade, Economic Standards, and Digital Global Connectivity. These three aspects were used to form a framework that would bridge the community to the global port activities.

Aspect	Local Manifestations	Examples
Global Trade	Micro Enterprises, Street Vendors	Quaiapo, Divisoria, New Port Area, etc.
Aspect	With Implications on:	Effects
Economic Standards	Education & Employment	Skilled vs Unskilled Work, Formal vs Informal Econ.
Aspect	Applications	Examples
Digital Connectivity	Trade, Education, Employment	Digital Trade Channels, Guided Online Programs, Remote Work & Digital Freelancing

## The Project

A project is a multi-functional structure that houses educational, omnichannel retail, service, and office spaces, which will give the marginalized communities by the Port a head start in a career in business, freelance/BPO work, or seafaring.

Users first enroll in a course offered by the Vocational School, which may run from 3-6 weeks.

### Vocational Education

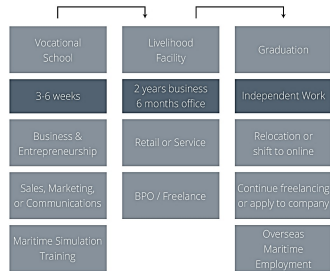
- Business & Entrepreneurship** - The fundamentals of business ownership & management covering both trade & service based business management.
- Sales** - Sales Management courses as training for sales representatives.
- Marketing** - Web marketing courses for digital marketers.
- Language & Communications** - Business English classes for customer support representatives / virtual assistants.
- Maritime Simulation Training** - Basic simulation training for employment in the maritime industry in accordance with the STCW 10.
- Short Courses** - Financial Literacy & Digital Literacy

After finishing courses from the Vocational School, users may get a head start on their careers through the use of the start-up facility within a fixed timeframe.

### Livelihood Facility

- Omni-channel Business Facility** - Retail and general service stalls with access to an outdoor delivery bay. Goods may be distributed both physically and through any e-commerce channel preferred by the vendor.
- Business Workstation** - For business owners to have access to office facilities for any official work needed in running their businesses.
- BPO Office Spaces** - For freelancers or small teams of BPO workers to conduct their work in the fields of sales, marketing and virtual assistance.

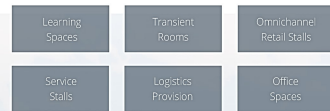
### Program Flow



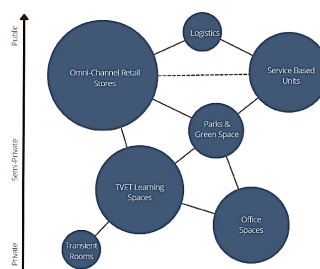
### User Profiles



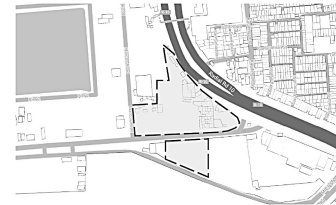
### Main Spaces



## Bubble Diagram



## The Site



The 1.5-hectare site consists of 2 adjacent properties bisected by the MICT North Access Road, and sits right at the threshold between the North Harbor and the community of Parola. It is accessible to the community from the south side of the property, and to guests from the R-10 highway.

## Vicinity Map



The area is part of a transport loop that can allow users quick access to and from the site. The site is located in close proximity to the North Port Passenger Terminal, which accommodates both local and international passengers. There are bus stops situated several meters from the site, and the expansion of the LRT-2 line includes the development of the Pier 4 LRT-2 Station, which opens up the site to the rest of Metro Manila, including Antipolo which sits at the opposite end of the line.

The site's location within a special economic zone and trading subcenter also provides opportunities for economic growth and activity, which manifests in the various businesses emerging near the area. There are plans for harbor expansions around the port area to accommodate a larger volume of trade goods, and the site is located in close proximity to Divisoria and other commercial areas.

## The Community

Barangay 20, also known as the community of Parola, is the target community of this project. Currently, the population of Brgy. 20 consists of a majority of working-age citizens; however, among this bracket only about half are employed. Majority of the employed belong to an informal economy and work as street vendors, security or employees of Divisoria business owners.

## Design Objectives

- Function**
  - Integrate the marginalized community into the global economy.
  - Inspire and facilitate learning & productivity among the members of the community.
- Form**
  - Blend in with the urban fabric of the port area and be non-alienating for the members of the community.
  - Be cohesive.
- Economy**
  - Be sustainable and economically designed for durability & easy repair.
- Time**
  - Be flexible, and capable of transformation & expansion over time.
- Environment**
  - Incorporate sustainable and passive architectural features.

## Design Concepts

### Liminality / Thresholds

The concept of liminality in space can be interpreted multiple ways, but in the context of the facility refers to the space between two points that is neither the origin nor the destination. It deals with thresholds, transitions, and the in-between of things, and may have applications in:



### Formal / Informal

Spaces will also be guided by the concepts of formality and informality in architecture and will allow both to overlap in its conception and form. Formality manifests in permanence in space and entails static geometry. Informality, on the other hand, may be represented by ephemeral elements and be explored through materials.

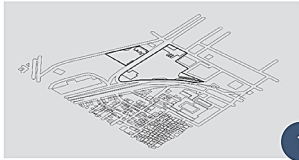
### Local / Global

Building on the concept of liminality, spaces will also apply a blend between local and global elements that are both familiar and unfamiliar to its users. Local elements would be familiar and presently dominant features, while the global would be unfamiliar features of universal appeal.

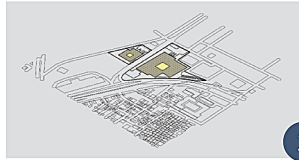




## Design Development



1 Site access points, circulation routes and parking were determined.



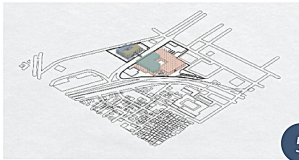
2 A 6m x 6m grid was established on the buildable area of the site, and the building footprint was outlined.



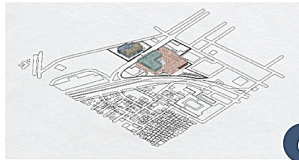
3 The program flow was plotted on site and spaces were zoned throughout the site.



4 Building access points & connections were established, and thresholds were emphasized.



5 The building mass was broken down & opened up for passive ventilation & views and to provide a distinction among zones.



6 Buildings were detailed. Learning spaces are on the lower site, commercial & office spaces on the upper site.



7 The roof was designed. The market roof was raised using space framing for better ventilation.

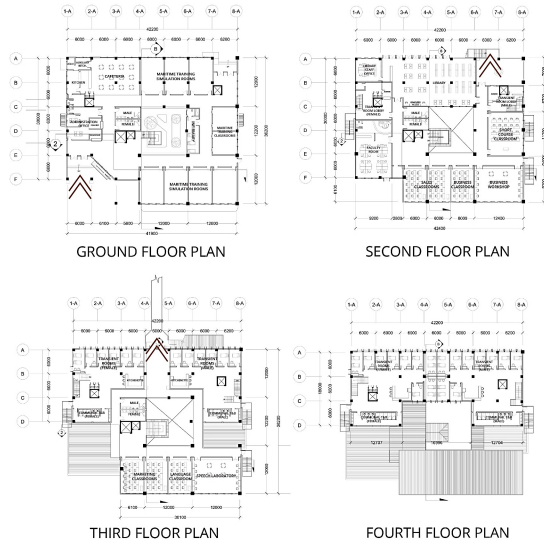


8 Sunshading & rain barriers were added to complete the structure.

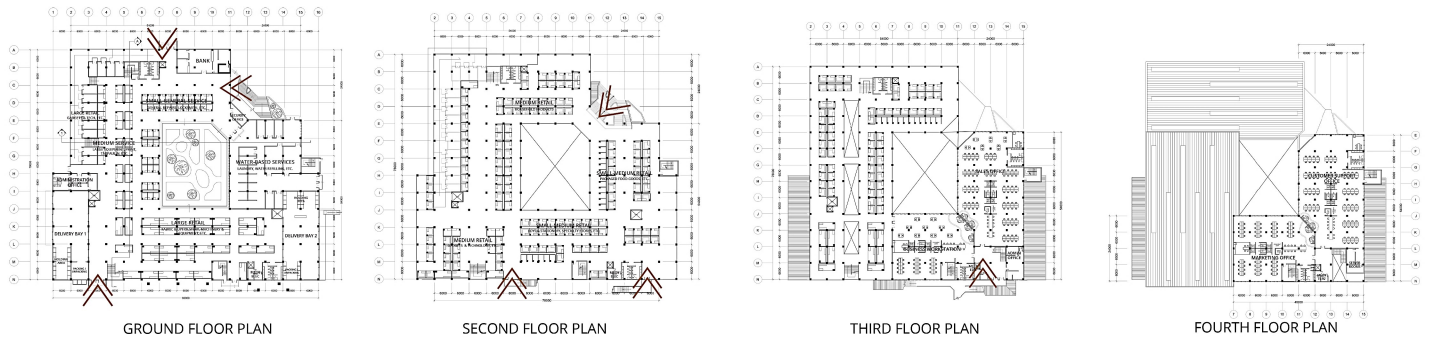
### Site Development Plan



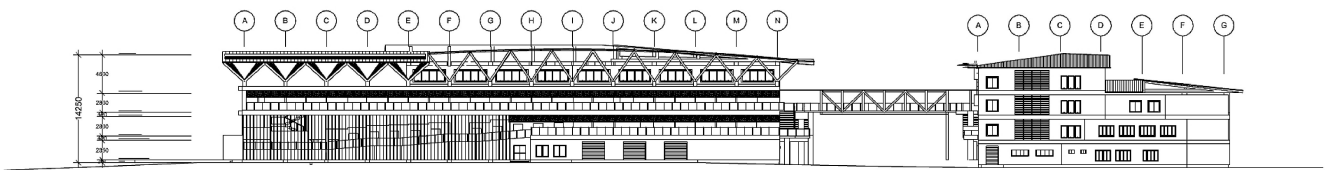
### Vocational School



### Livelihood Facility



### SITE ELEVATION



VOCATIONAL SCHOOL EXTERIOR



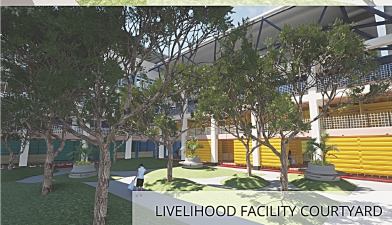
VOCATIONAL SCHOOL CORRIDOR



TRANSIENT ROOM COMMON ROOM



LIVELIHOOD FACILITY REAR FACADE



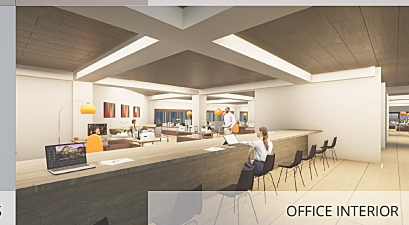
LIVELIHOOD FACILITY COURTYARD



LIVELIHOOD FACILITY COMMERCIAL STALLS



LIVELIHOOD FACILITY COMMERCIAL STALLS



OFFICE INTERIOR