

PERSPECTIVES

ARCHICAD EDUCATION VERSION



STREET VIEW PERSPECTIVE

Revision History		
Rev#	CHD	Change Name



CG Architecture
45 Luwusan St. Guyong,
Santa Maria Bulacan,
Philippines,
3022

High-End Two-Storey Residential Project
Makati, Metro Manila,
Philippines,
1215

Drawing Name
Perspectives 1

Drawing Status
Construction Drawings

Modified by
Quilones, Carlo Gabriel D.

Checked by
Lopez, Karen Theresse F.,
UAP, March

Drawing Scale
1:150

Layout ID
CS-02



LIVING ROOM

DINING ROOM

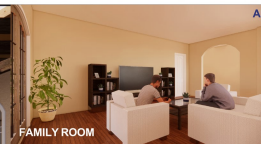
KITCHEN



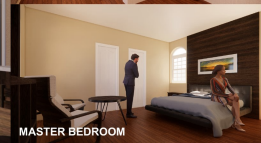
VIEW FROM LANAI



VIEW FROM LOT



FAMILY ROOM



MASTER BEDROOM



ENTERTAINMENT ROOM



GYM



GAME ROOM

Revision History		
Rev#	CHD	Change Name



CG Architecture
45 Luwusan St. Guyong,
Santa Maria Bulacan,
Philippines,
3022

High-End Two-Storey Residential Project
Makati, Metro Manila,
Philippines,
1215

Drawing Name
Perspectives 2

Drawing Status
Construction Drawings

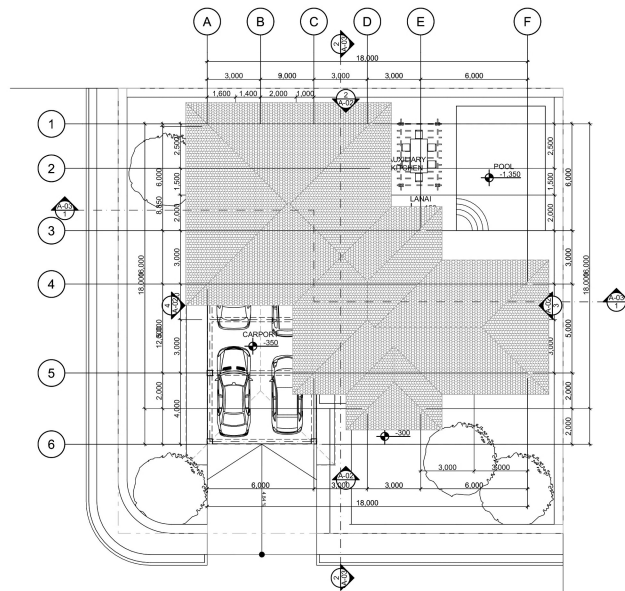
Modified by
Quilones, Carlo Gabriel D.

Checked by
Lopez, Karen Theresse F.,
UAP, March

Drawing Scale
1:150

Layout ID
CS-02

ARCHICAD EDUCATION VERSION



1 SITE DEVELOPMENT PLAN
SCALE: 1:150

Revision History		
Rev#	CHD	Change Name



CG Architecture
45 Luwusan St. Guyong,
Santa Maria Bulacan,
Philippines,
3022

High-End Two-Storey Residential Project
Makati, Metro Manila,
Philippines,
1215

Drawing Name
Site Development Plan

Drawing Status
Construction Drawings

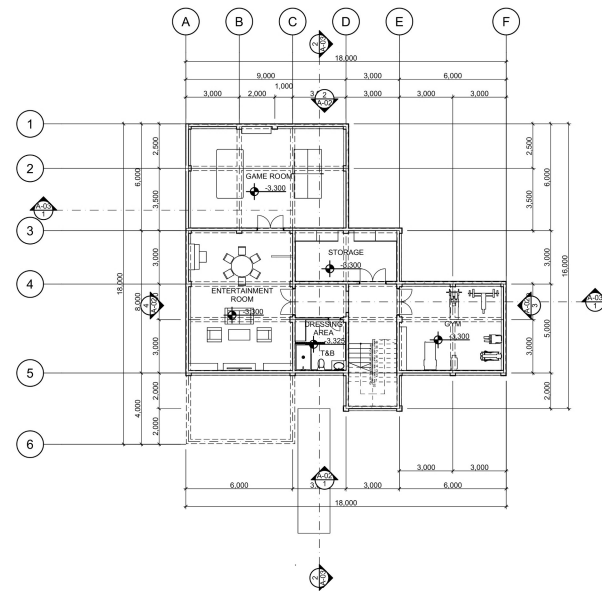
Modified by
Quilones, Carlo Gabriel D.

Checked by
Lopez, Karen Theresse F.,
UAP, March

Drawing Scale
1:150

Layout ID
A-01

ARCHICAD EDUCATION VERSION



4 BASEMENT FLOOR PLAN
SCALE: 1:150

Revision History		
Rev#	CHD	Change Name



CG Architecture
45 Luwusan St. Guyong,
Santa Maria Bulacan,
Philippines,
3022

High-End Two-Storey Residential Project
Makati, Metro Manila,
Philippines,
1215

Drawing Name
Basement Floor Plan

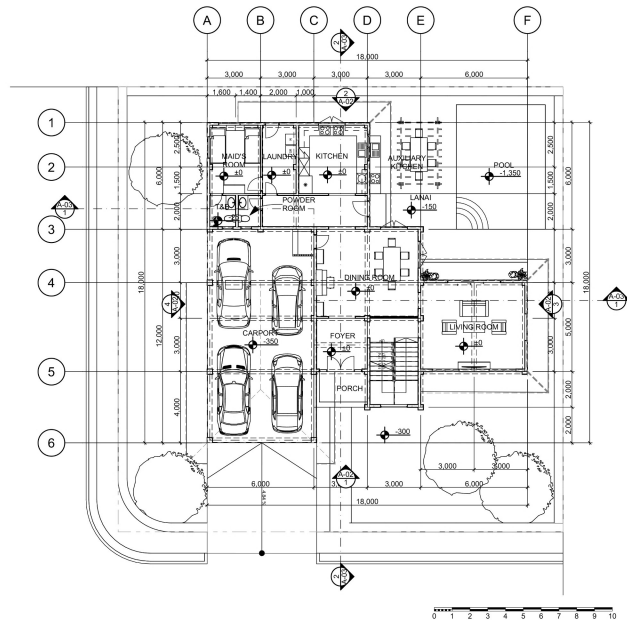
Drawing Status
Construction Drawings

Modified by
Quilones, Carlo Gabriel D.

Checked by
Lopez, Karen Theresse F.,
UAP, March

Drawing Scale
1:150


Layout ID
A-01



2 GROUND FLOOR PLAN
SCALE: 1:150

Revision History		
Rev#	Chg	Change Name

Company Title



CG Architecture
45 Luwisan St. Guyong,
Santa Maria Bulacan,
Philippines,
3022

High-End Two-Storey Residential Project

Makati, Metro Manila,
Philippines,
1219

Drawing Name
Ground Floor Plan

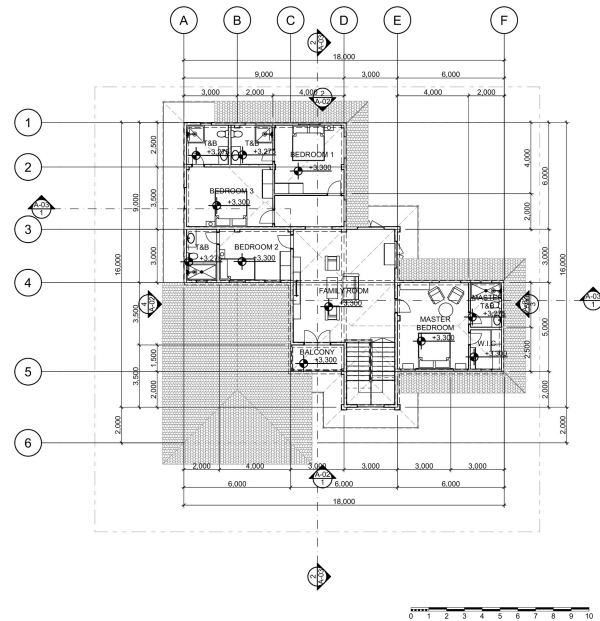
Drawing Status
Construction Drawings

Modified by
Quilones, Carlo Gabriel D.

Checked by
Lopez, Karen Therese F.,
UAP, March

Drawing Scale
1:150


Layout ID
A-01



3 SECOND FLOOR PLAN
SCALE: 1:150

Revision History		
Rev#	Chg	Change Name

Company Title



CG Architecture
45 Luwisan St. Guyong,
Santa Maria Bulacan,
Philippines,
3022

High-End Two-Storey Residential Project

Makati, Metro Manila,
Philippines,
1219

Drawing Name
Second Floor Plan

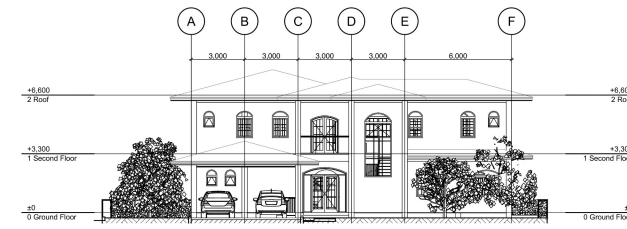
Drawing Status
Construction Drawings

Modified by
Quilones, Carlo Gabriel D.

Checked by
Lopez, Karen Therese F.,
UAP, March

Drawing Scale
1:150


Layout ID
A-01



1 FRONT ELEVATION
SCALE: 1:150

Revision History		
Rev#	Chg	Change Name

Company Title



CG Architecture
45 Luwisan St. Guyong,
Santa Maria Bulacan,
Philippines,
3022

High-End Two-Storey Residential Project

Makati, Metro Manila,
Philippines,
1219

Drawing Name
Front & Right-Side Elevations

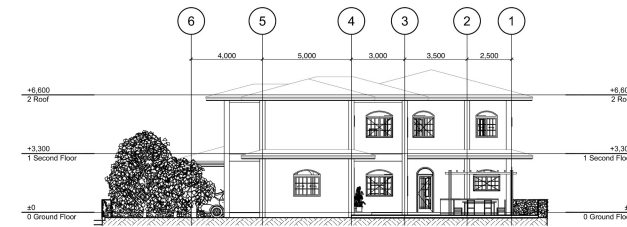
Drawing Status
Construction Drawings

Modified by
Quilones, Carlo Gabriel D.

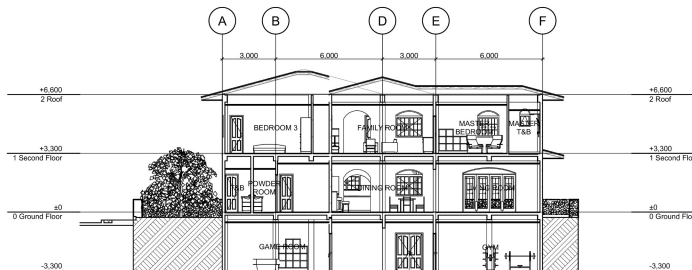
Checked by
Lopez, Karen Therese F.,
UAP, March

Drawing Scale
1:150

Layout ID
A-02




2 RIGHT-SIDE ELEVATION
SCALE: 1:150



1 CROSS SECTION
SCALE: 1:150

Revision History		
Rev#	Chg	Change Name

Company Title



CG Architecture
45 Luwisan St. Guyong,
Santa Maria Bulacan,
Philippines,
3022

High-End Two-Storey Residential Project

Makati, Metro Manila,
Philippines,
1219

Drawing Name
Sections

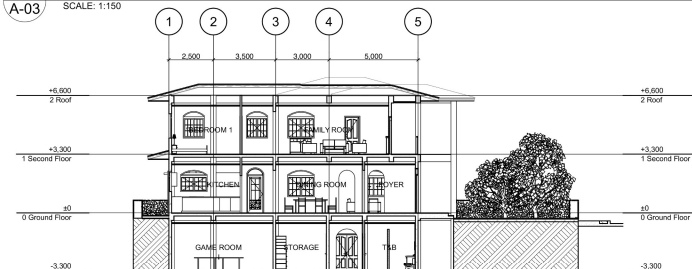
Drawing Status
Construction Drawings

Modified by
Quilones, Carlo Gabriel D.

Checked by
Lopez, Karen Therese F.,
UAP, March

Drawing Scale
1:150

Layout ID
A-03



2 LONGITUDINAL SECTION
SCALE: 1:150