

DESIGN CONCEPT

LUMAGI: THE MAGINHAWA LANDMARK HUB

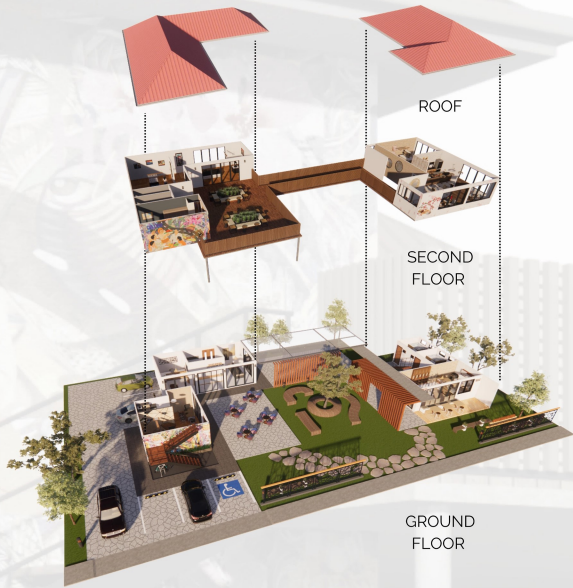
- to remain— the memories and the hope within

The design of the LUMAGI Landmark Hub is not that complex or complicated, given that the structures around the site are residential turned commercial spaces. With that in mind, the landmark hub should not be too intimidating but instead should invoke a homey feeling. The goal is for the users to feel more comfortable and relaxed within the space. It should be a space where they can feel the hope of Maginhawa. The use of wooden materials gives off the atmosphere of warmth and with it, you can also be closer to nature.

Aside from that, in order to not overwhelm the users, the colors that were used are also not too bold or bright. Since art is very relevant to Maginhawa, it is quite fitting to put graffiti on some of the walls, which also shows the culture and life within Maginhawa.

Considering that the site is a place where hope sprouted with the famous Maginhawa pantry, the LUMAGI Landmark Hub will serve as a vessel of hope and memory for the people who will visit the site, as well as the vessel of all the various cultures that were cultivated within Maginhawa.

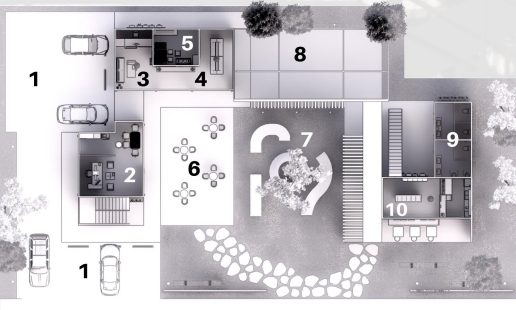
The LUMAGI Landmark Hub should serve as a mnemonic device that will assist the people to remember their encounters in Maginhawa, by allowing them to experience the culture and hope of the whole Maginhawa within the same space through the LUMAGI Landmark Hub.



ROOF

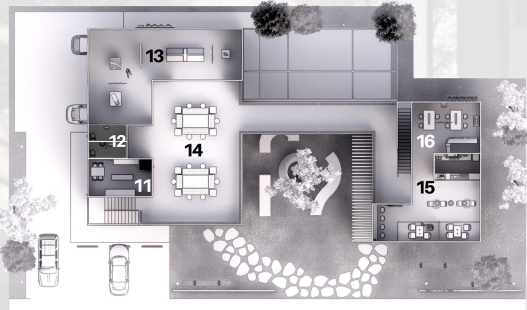
SECOND FLOOR

GROUND FLOOR



GROUND FLOOR PLAN

- 1 PARKING AREA
- 2 ADMIN OFFICE
- 3 RECEPTION DESK
- 4 LOUNGE
- 5 STORAGE
- 6 PUBLIC DINING AREA
- 7 PUBLIC LANDSCAPE AREA
- 8 OPEN EVENTS AREA
- 9 PUBLIC TOILETS
- 10 BAKERY



SECOND FLOOR PLAN

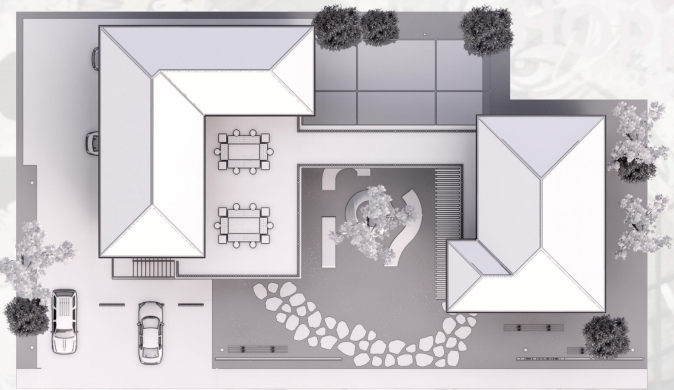
- 11 STAFF ROOM
- 12 PUBLIC TOILETS
- 13 ART GALLERY
- 14 OPEN BALCONY
- 15 COFFEE SHOP
- 16 DIY/SOUVENIR AREA



DESIGN CONCEPT

LUMAGI: THE MAGINHAWA LANDMARK HUB

- to remain— the memories and the hope within



SITE DEVELOPMENT PLAN



FRONT ELEVATION



REAR ELEVATION



RIGHT SIDE ELEVATION



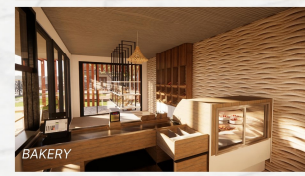
LEFT SIDE ELEVATION



ADMIN OFFICE



COFFEE SHOP



BAKERY

The overall look of the conceptualized structure within the site. Technically, there are two buildings that are connected by a deck or an open balcony, thus making it possible for the buildings to appear as one structure only.

It has a lot of open areas, considering that there are spaces such as the open events area, as well as the public dining and landscape areas. According to research, it seems that there is low to no vegetation within and around the site, since there are a lot of buildings and the place is somehow highly urbanized. With the open spaces, there are a lot of opportunities to make gardens, arrange the landscaping, and plant more trees.



RECEPTION DESK



PUBLIC DINING AREA



LOUNGE PUBLIC DINING EVENTS AREA



RIGHT STAIRS



LEFT STAIRS