

Tahanan ng Hiraya

LANDSCAPE DEVELOPMENT OF KALINGA DAYCARE CENTER

Cuisia, Ann Dominique S.
Delavin, Frederick A.
Garcia, Christine
Inere, Moses

LANDSCAPE ARCHITECTURE 22
Prof. Nappy Navarra
Prof. Joyce Aguirre



Quezon City



The 3rd location of the proposed Kalinga Day Care Center (KDCC) Project is approximately **2,390 sqm.** in area, located along Juan Luna St., Mabini St., and Gomburza St. inside the University of the Philippines - Diliman Quezon city. It is an alternative learning environment **for kids 1-5 years old** with the aim of providing a safe environment for children, to meet the developmental needs of children **in a gender-fair and inclusive environment, and to promote positive self-concept for the children.**

The site for development is brownfield, previously a stockyard facility of DPWH and suspected of land contamination due to stocked construction materials, parking lot of construction trucks, and possible rust and oil spillage.

SITE INVENTORY

Vegetation

- there are existing mature and growing trees, and shrubs in the site

Site

- former stockyard
- existing entrance on the northern portion
- ground on the eastern portion is vegetated, on the western portion is bare earth
- makeshift shelters are present

Circulation

- northern and eastern roads are two-way
- west road is one-way
- no heavy traffic

Surrounding Land-use

- the site is surrounded by residential area to the north and west, a vacant lot to the east, and forest space to the south

Topography

- slopes towards the southwest direction (lowest point)
- a portion of the land in the NE direction has a notable surface depression
- water flows to the SW

Light and Wind Condition

- a big portion of the site is shaded
- prevailing winds are filtered by the surrounding environment and trees

SITE ANALYSIS

- preserve and re-plant select shrubs
- consider using plants as an alternative to traditional fence
- allow the kids to have a direct contact with plants

- do appropriate soil measures (remediation)
- utilize the existing entrance
- keep the majority of vegetated areas for kids' use (play and learn)
- remove existing structures; build new ones on the bare ground
- embellish the NE corner (there's a post there)

- provide drop-off and parking area
- provide an opening to the east of the site to accommodate people accessing it by walking
- protect the kids from the vehicular traffic by securing the perimeter

- this is an advantage for the kids since there are only a few activities in the area that may cause them harm
- also a disadvantage because there's not enough natural surveillance

- keep the natural topography
- utilize the surface depression as a nature and play space for the kids
- avoid putting frequently used spaces in the SW portion of the site; runoff water drains here

- maximize the exposed area to sunlight as the building's location
- utilize the shaded area for kids' active tasks
- place frequently used areas in the direction of the filtered winds for cooling

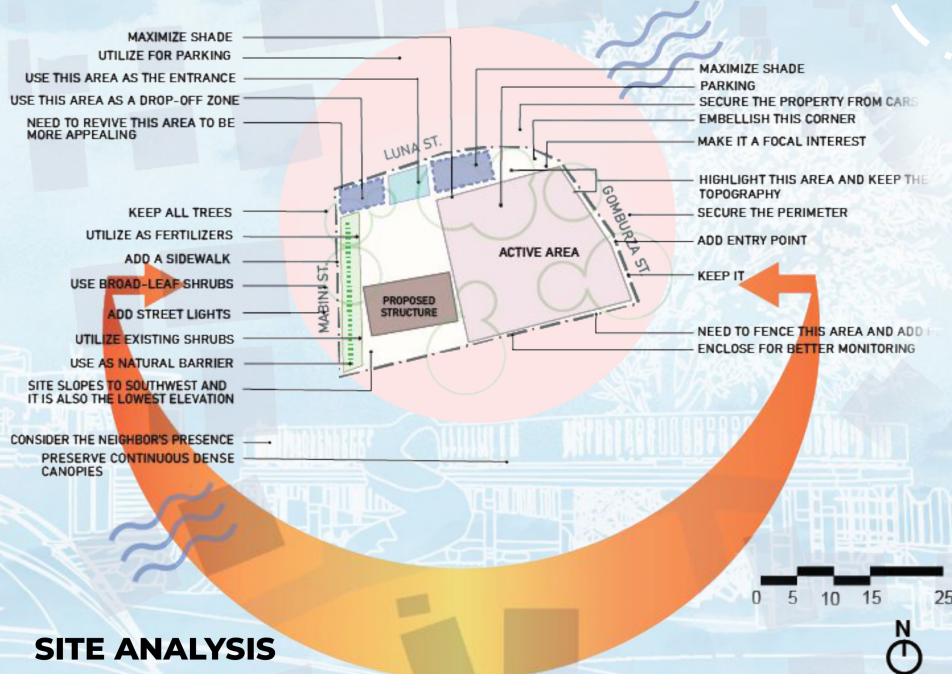


Strength - it has a campus ambience--a feeling of freedom for learning, it is safe as there are neighbors who can look around, it is well-shaded and it accommodates a large space, it has low traffic and there is already a parking space allotted for the development

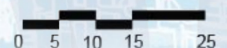
Weakness - it is a stockyard under brownfield so there are numerous possible contaminants present, the overall space is filthy and trashes are present everywhere, the place has a lot of high-maintenance greeneries and deciduous trees so the volume of the trees are lesser and sun can easily pass through it, it is detached on the center of the communities

Opportunities - it has an interesting topography, they already have existing tall and old native trees and shrubs, we can stimulate or enliven the community with our design

Threats - the area does not have much surveillance as it is far from the center of communities, there is lack of street lights, the groundcover is hazardous as unidentified scraps are present everywhere



SITE ANALYSIS



Tahanan ng Hiraya

LANDSCAPE DEVELOPMENT OF KALINGA DAYCARE CENTER

Tahanan ng Hiraya is inspired from the **formation of anthill** as this signifies the ant community's teamwork. With the use of irregular curves, concave-shaped and overheads, the spaces were designed to mimic an inside of an anthill. Aside from its form, the concept highlights on how ants work together for their community,

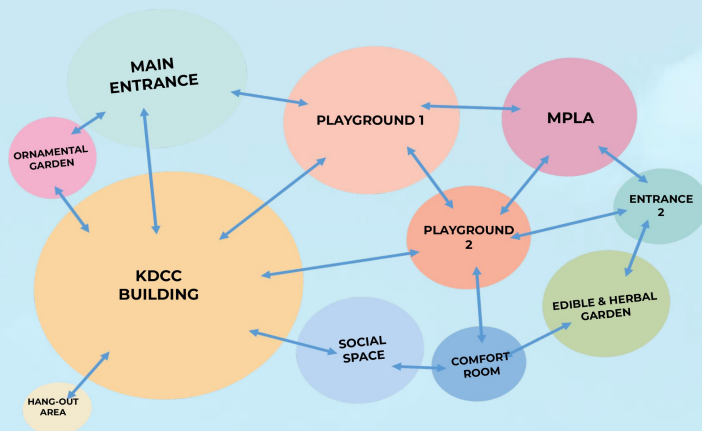
The aim of this design proposal is to contribute to working together towards feeding the children, the hope of our country, a healthy environment where they can learn. As KDCC will be their **tahanan** when their parents work just like the ant workers, the spaces were designed to be inclusive, creative, and safe for everyone. This is done by including creative open learning areas, edible gardens, passive and active play, and social spaces.

The concept is based on the purpose of ant mounds. Ant mounds serve as the entry point to the nest, help in controlling internal temperature, and protect the nest from damages. These purposes are then related to KDCC as explained below:

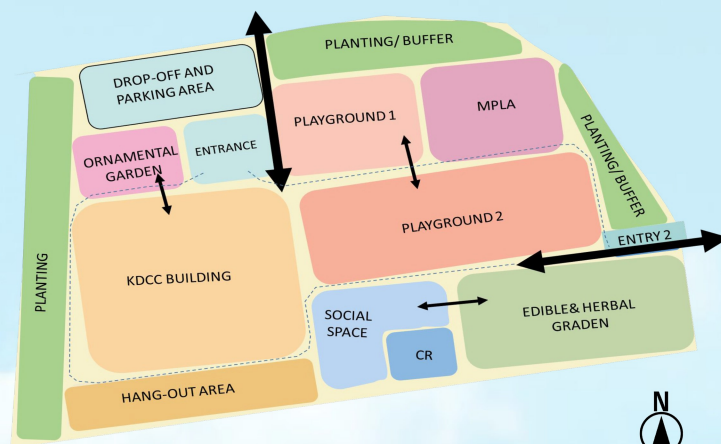
KDCC as an entry point to the nest. The nest is then framed as the learning experience kids get from this center. KDCC is an entry point to an alternative learning experience and environment.

KDCC is a setting where kids become sensitive to the processes of nature. Kids will have first-hand learning experience about nature throughout the site.

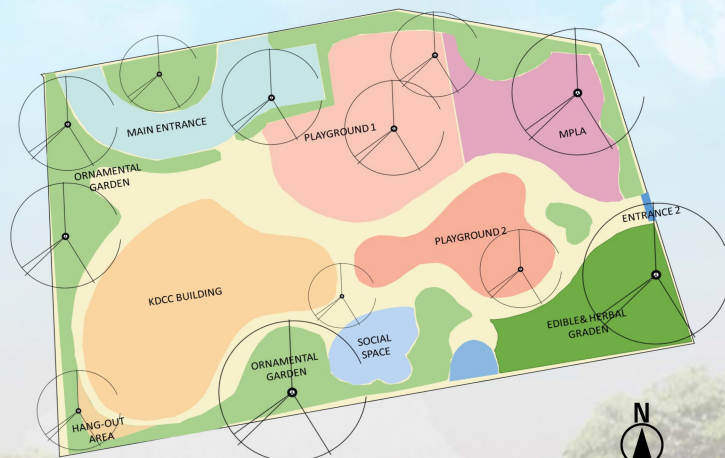
KDCC as an institution that promotes and protects these learned values from the possible mind conditioning of the world. The center will house different spaces where kids will learn important life skills and values they will carry for the rest of their lives.



Bubble Diagram



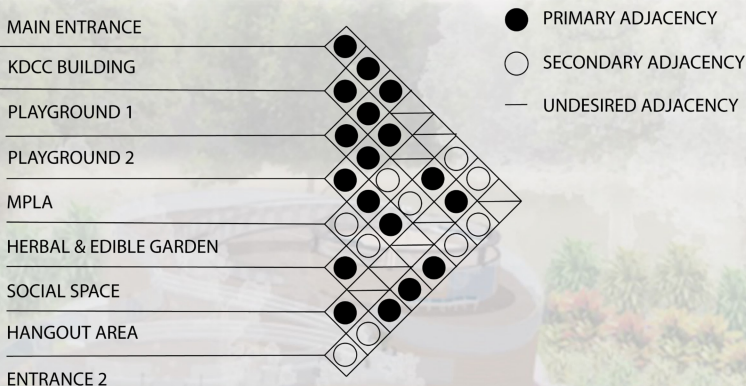
Functional Diagram



Design Translation

TRAITS	PROGRAMMED SPACES	DESCRIPTION
Physically-active	Play space	-It has holes where kids may pass through -different elevations for added interest -low-height hanging bridge situated between two mounds -circular platforms wrapped in nets with the core serving as trampoline area (each circle will have different play element)
Nature-sensitive	Edible garden	-kids will be more sensitive to nature as they learn how plants grow -the area must then be accessible to children in all directions -more like a farm-like experience -can also be multi-layered
	Random resting areas near natural elements	-it is where kids can rest and observe the adjacent nature (looking at the silhouettes of trees, maybe a water-feature, etc.) -can be curvilinear in forms and have bright colors
Creative	Art Space	-ample space where they can do their crafts have a mini-platform
Relational	Social space (includes eating/picnic areas)	-keep the existing design but the ground below it will serve as picnic/eating area
Love for learning	MPLA (Multi-Purpose Learning Area)	-organic shape amphitheater -roof of the stage can be curvilinear, multi-layered, and colored

As the site was known to be a former stockyard, the site is susceptible to land contamination. Contemporary Landscape Design approaches to contaminated and derelict sites drove the idea of reclaiming space for Kalinga Day Care Center. The possible intervention for the site is to use phytoremediation and chemical-eating plants to extract and remove possible contaminants and pollutants in soil. This is to reduce blight and improve the site by cleaning up contamination for a safe and clean environment for kids.

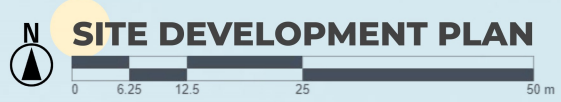
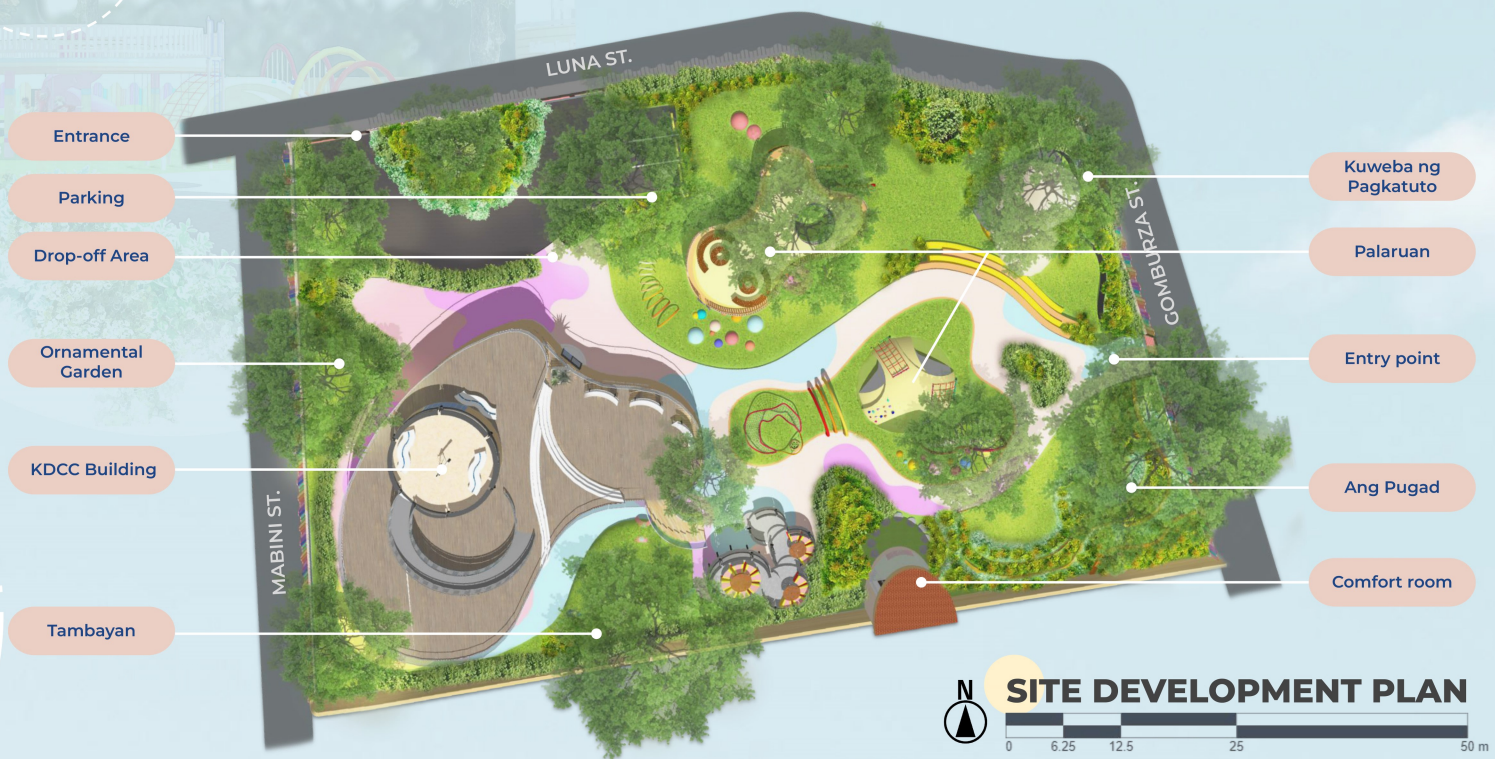


Proximity Matrix



Tahanan ng Hiraya

LANDSCAPE DEVELOPMENT OF KALINGA DAYCARE CENTER



HARDSCAPE PALETTE



PLANTING PALETTE



Tahanan ng Hiraya

LANDSCAPE DEVELOPMENT OF KALINGA DAYCARE CENTER

Ang Pugad

- Houses the edible and herbal garden in the site
- Provides an educational and functional space for the users
- Different elevations of plantings
- Also used as picnic space

Libangan

- Different elevations of social spaces
- Used for dining, socializing, and other passive activities

KDCC Building

- Inspired by the ant's colony
- Has a 3-level viewing deck at its roof for passive and educational purposes

Ornamental Garden

- Welcoming the users are colorful plantings and flowering shrubs
- Passive area for sittings and relaxation



Kuweba ng Pagkatuto

- Outdoor classroom that can also serve as events space
- Activities: storytelling, arts and crafts learning, monthly celebrations and etc.
- Enclosed like a cave with sunlight coming through

(Amphitheater/Multi-Purpose Learning Area)

Palaruan

Munting Bundok

- Enclosed playscape with depressed area
- Kids can climb using ropes and stepping stones
- Around it are nets, play overheads, and other play fixtures

Viewing Deck

- Kids can climb using net ropes and ladder, and can also go down through the slide
- The tree within the deck serves as the shade of the kids
- Includes benches for passive uses but can also be an area for playing
- Includes playground underneath with swings, seesaw, and running area



View from Viewing Deck



View from the KDCC Building

