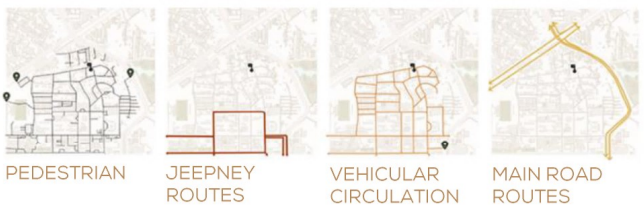
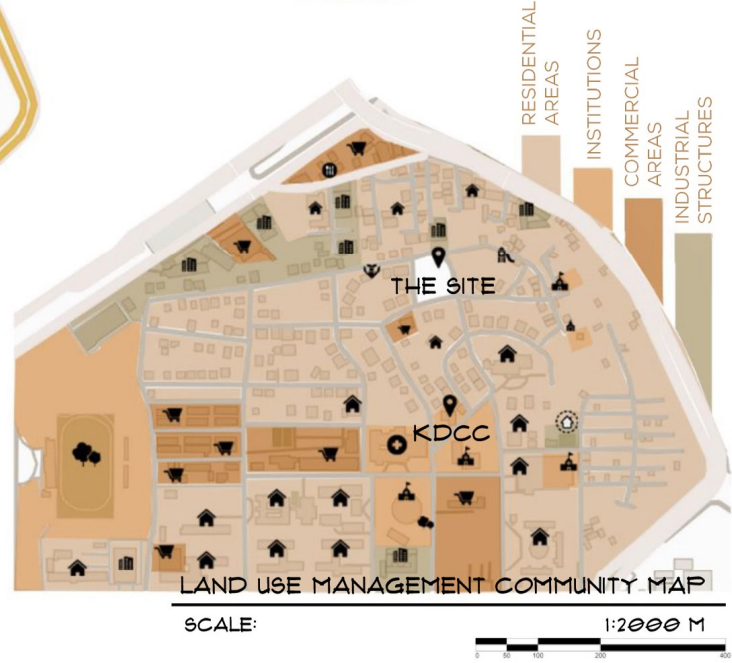
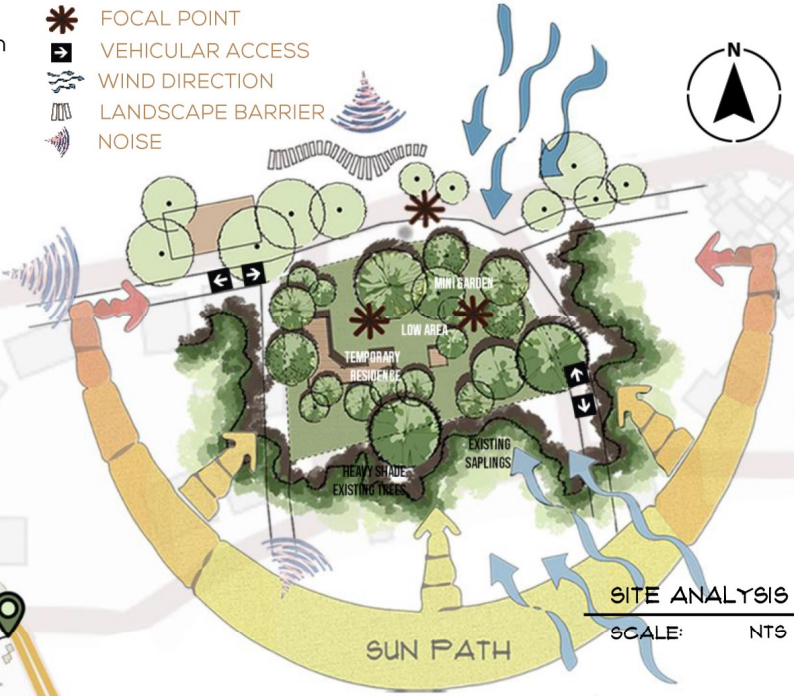


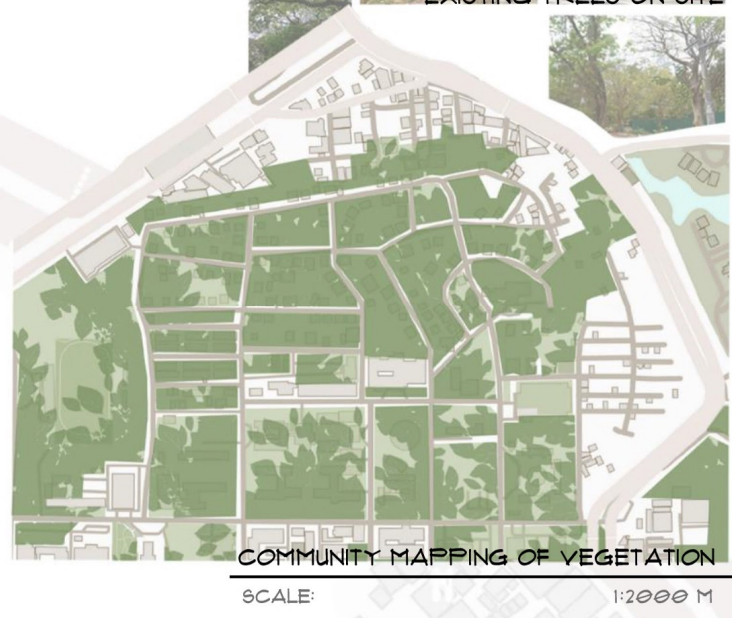
The Kalinga Day Care Center (KDCC) is an educational environment that promotes the holistic development of children through attentive, gender-fair, and environment-aware services. The proposed KDCC development is a 2,390 sqm brownfield along Juan Luna and Gomburza Street inside the University of the Philippines-Diliman Campus; approximately 270 meters North of the current KDCC complex.

- FOCAL POINT
- VEHICULAR ACCESS
- WIND DIRECTION
- LANDSCAPE BARRIER
- NOISE

TOPOGRAPHY



The derelict area acts as a temporary residential site. Various specimen trees surround the site and provide adequate shade for users. A large portion of the site's surrounding spaces is dominated by residential structures and small businesses. There is minimal vehicular flow in the area, with little to no risk of traffic and car noise. Faint noise comes from main areas further but around the area such as food stops and the UP Oval.

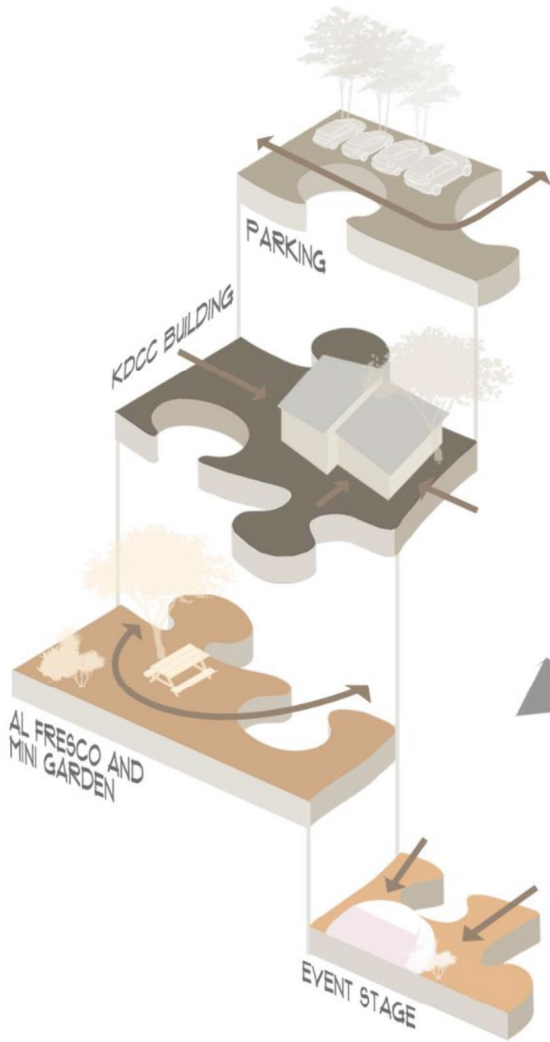


The proposed theme, concept, and inspiration of the design is approached with four main puzzle pieces.

These pieces symbolizes the main areas in the site, which reflects the main principles of child development.

The Physical, Social, Emotional and Cognitive development which pertains to the nature of learning for the early stage of childhood.

COGNITIVE DEVELOPMENT. The KDCC Main Area Building reflects the cognitive development of a child with focus on interactive learning. It is a designated building for classes connected to the main entrances of the site.



SOCIAL DEVELOPMENT. The open space assigned to function during events reflects the social development of the children. It improves social awareness, interaction, and activity.

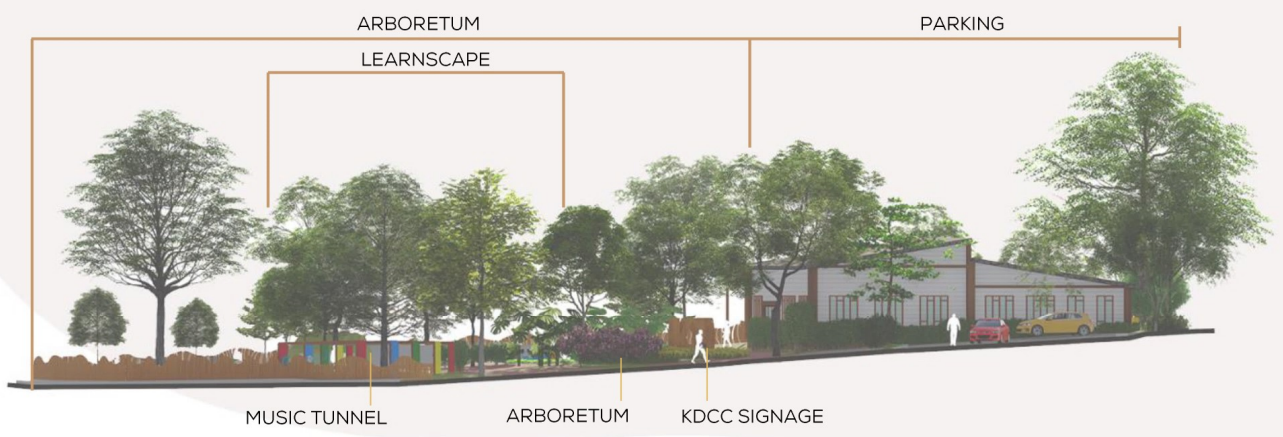
EMOTIONAL DEVELOPMENT. The garden and Al Fresco allows the children to interact and bond more with their peers and family, to develop a strong sense of responsibility and teamwork as they tend to their mini garden.

PHYSICAL DEVELOPMENT. The Playscapes reflect the physical development of the children towards self discovery and growth to explore their creativity with the given play elements on the site.

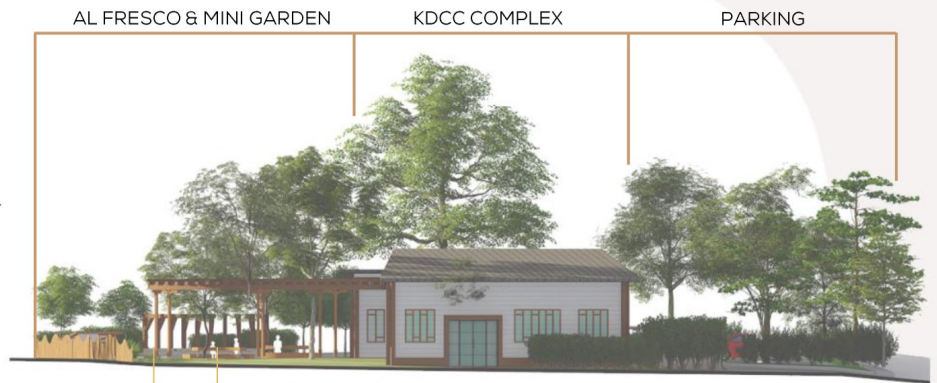


PLANT PALETTE





LONGITUDINAL SECTION THROUGH A - A'
SCALE: 1:600 M



CROSS SECTION THROUGH B - B'
SCALE: 1:600 M

The Kalinga Daycare Center aims to develop the interpersonal and intrapersonal skills of a child as they learn and grow.

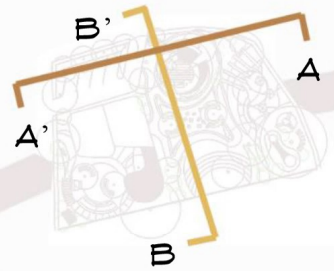
"Tayo - tayo - tayo" symbolizes the three (3) main purpose of the design.

ta-yô - Stand. The primary aim of KDCC is to help the children stand on their own feet, helping them build up their character as they holistically develop.

tá-yo - Us. Teaching the importance of togetherness, developing interpersonal communication and teamwork within the kids.

ta-yó - Build. To encourage children to use their imagination and build their own paths as they progress in the program.

- 1 PARKING
- 2 ARBORETUM
- 3 KDCC COMPLEX
- 4 BUILD BLOCK
- 5 LEARNSCAPE
- 6 AL FRESCO & MINI GARDEN
- 7 AMPHITHEATER
- 8 PLAYScape



**KALINGA DAYCARE CENTER
SITE DEVELOPMENT PLAN**

SCALE:

1:600 M



AMPHITHEATER



AL FRESCO GARDEN



KDCC COMPLEX



PLAYSCAPE



KALINGA DAYCARE CENTER SITE PERSPECTIVES



LEARNSCAPE

BUILD BLOCK



ARBORETUM



PARKING