

HARBOR IN THE SKY

Initially, this rest house served as a mini getaway place for people to relax, with the tower being the only area where the users will get a good view of the city. With the owner recently acquiring the neighboring lot, changes were brought to the landscape which led to the hillside's revival. It turned from merely a resting place, to a sanctuary where people could reflect as they appreciate the natural elements that encompass the area. It became a place that allowed the users to breathe and contemplate as they lie on the landscape, hence, it became a Harbor in the Sky.

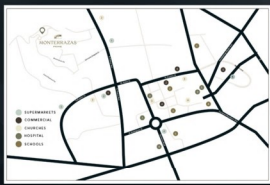
The sky is known to be a place where clouds reside, and clouds are ought to be metaphors for our thoughts and feelings. They come and go, and sometimes be changing such as our thoughts being cloudy, sunny, or turbulent. The Harbor in the sky serves as a sanctuary for people to "lie with clouds", this allowing the users to be one with their thoughts (Nikolic, 2018).

This project is also influenced by the theory of Placemaking. Through the creation of an engaging design especially in the landscape, the people's relationship with the space strengthens. This leaves an impact on the user, thus, producing strong connection between the people and the space (What Is Placemaking?, 2018).

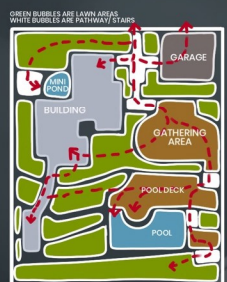


TWO STOREY
RETREAT
HOUSE

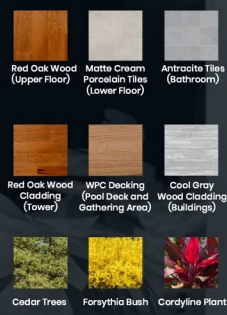
A PLACE TO REFLECT AND
LIE WITH THE CLOUDS



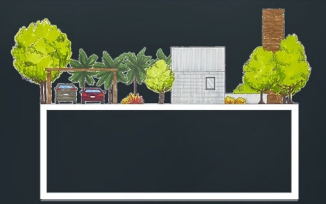
At Lot 8S, Block 2, Hillside Lane, in Monterrazas Prime Residences, Cebu City, lies the Harbor in the Sky. It is a rest house situated on a hill that has an overlooking view of the city. As the map suggests, there are various facilities surrounding the area. This is a perfect getaway house where one can destress without the worry of not having accessible facilities in case of emergencies, and the like.



REFINED FUNCTIONAL DIAGRAM
SCALE 1:150 MTS



SITE DEVELOPMENT PLAN
SCALE 1:100 MTS



FRONT ELEVATION
SCALE 1:100 MTS



REAR ELEVATION
SCALE 1:100 MTS



SIDE ELEVATION
SCALE 1:100 MTS



LONGITUDINAL ELEVATION
SCALE 1:100 MTS



LOWER FLOOR PLAN SCALE 1:80 MTS
UPPER FLOOR PLAN SCALE 1:80 MTS



MERYLSON & CO.
Residential and Commercial
Landscape Architecture
EST. 2003

An Architectural firm focused on
"Creating sanctuaries beyond walls"

CONTACT US
www.merylsonandco.com
merylsonandco@gmail.com
419-919-0320
511 Atricio St., Architecture Lane, Cebu City, Philippines

To further see the details of the Harbor in the Sky, scan this QR code for the video presentation of the sketch model version of the project.



PROJECT BY
PATRICIA MERYLSON & J. TONGSON

Disclaimer:
Information contained in this architectural board such as the project's site address and company information (even those based on real locations) are entirely fictional. These are purposely made for better visualization of the project and to support the design concept.
References:
Nikolic, N. (2018). Sky Metaphor. Retrieved from <https://meshnikolic.com/sky-metaphor>
What Is Placemaking? (2018). Project for Public Spaces. Retrieved from <https://www.pps.org/article/what-is-placemaking>
Photo References:
<https://www.realtynetwork.ph/wp-content/uploads/2021/08/3D-Random-Monterrazas-Prime-Luxury-House-and-Lot-in-Cebu.jpg>
<https://myhouses.ph/wp-content/uploads/2021/08/3D-Random-Monterrazas-Prime-Luxury-House-and-Lot-in-Cebu.jpg>