

KAPWA COMMUNITY FARMERS MARKET

Inspired after the community pantry which showcased the resilience and unity of the Filipinos, the chosen Maginhawa Landmark hub is a Community Farmers Market, situated within Diliman, Quezon City particularly in Maginhawa St., Diliman, Quezon City, Metro Manila. Pakikipagkapwa is the very essence and function of the proposed community farmers market: a wet market in form but a community pantry in purpose as well where fresh, local goods are sold and/or donated, supporting the micro-economy of farmers, fishers, local vendors, while simultaneously building camaraderie and trust. The community farmers market is fit to be Maginhawa Landmark hub for it embodies Maginhawa Street's Spirit of Place – the love for food and sense of community.



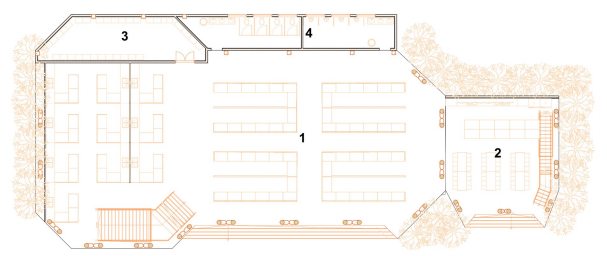
The Pakikipagkapwa concept is tied in the Bayanihan of the Filipinos. This was integrated in the form of the plan: inspired from the symbol of unity, a combined polygonal floor plan was formed



Parking was a common issue in Maginhawa street therefore the front is solely for parking purposes



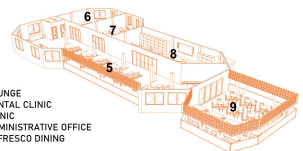
Zigzag patterns are observed everywhere -- from the slanted columns, curtain wall patterns, and tile patterns; zigzag emulated the bayanihan imagery in which it signifies the very act of carrying the weight together.



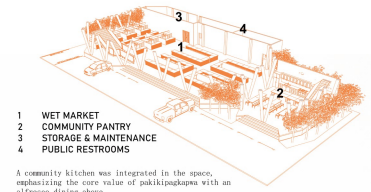
GROUND FLOOR PLAN SCALE 1:150



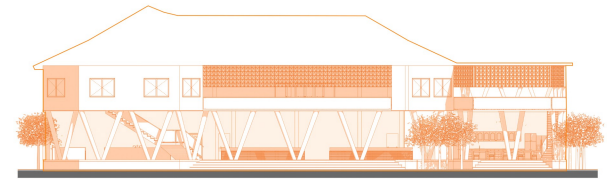
ARTIFICIAL THATCH ROOFING
Coherent with the Bayanihan tied to Pakikipagkapwa concept, artificial thatch roofing is chosen as it is reminiscent of the classic balay-kubo.



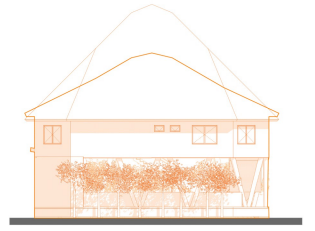
SECOND FLOOR PLAN SCALE 1:150



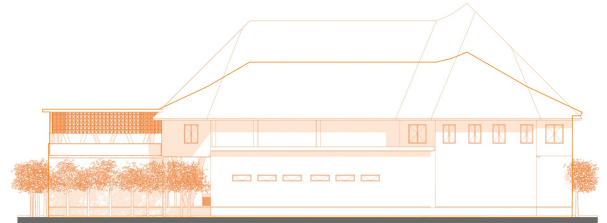
1 WET MARKET
2 COMMUNITY PANTRY
3 STORAGE & MAINTENANCE
4 PUBLIC RESTROOMS
5 LOUNGE
6 DENTAL CLINIC
7 CLINIC
8 ADMINISTRATIVE OFFICE
9 ALFRESCO DINING
A community kitchen was integrated in the space, emphasizing the core value of pakikipagkapwa with an alfresco dining above.



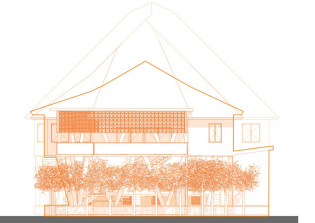
FRONT ELEVATION SCALE 1:150



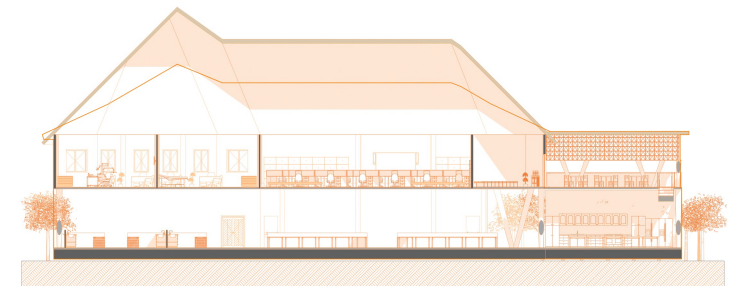
LEFT SIDE ELEVATION SCALE 1:150



REAR ELEVATION SCALE 1:150



RIGHT SIDE ELEVATION SCALE 1:150



SECTION SCALE 1:125

