



Verdure

A world-class holistic wellness retreat house that aims to restore your innermost well-being. With its natural & sustainable natural design, it may help in rejuvenating your body, nurturing your mind, and healing your soul.

VIRAY
ARCHITECTURE



SITE DEVELOPMENT PLAN



With the revitalizing power of nature as seen from the bright and well ventilated indoor and outdoor amenities, you can always re-energize and be at peace, away from the city full of noise, deadlines, and hustle.

VIRAY
ARCHITECTURE

SCALE 1:150
0 3.75 7.5 15 m

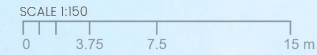


Its amenities and space design will make you feel at home and relaxed in the joyful presence of your loved ones. It includes all essential areas for various hobbies and responsibilities, designed for efficiency and comfort.

Its architectural exterior harmonizes with the meticulously designed interior pieces that brings about the over all restful experience.



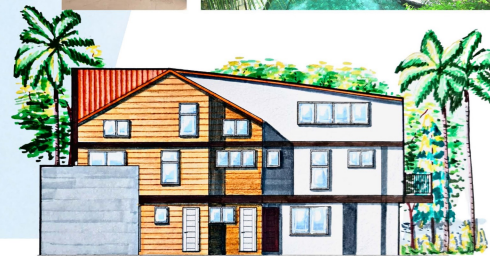
FLOOR PLAN



VIRAY
ARCHITECTURE



FRONT ELEVATION



RIGHT SIDE ELEVATION



SECTION

The cozy and serene retreat house may help you reconnect with nature, with yourself, and with God. Verdure has areas both for self meditation and for the collective spending of time with your loved ones; from the living area and garden to the beach.

Reward yourself with a soothing and tranquil journey, here in Verdure retreat house!

VIRAY
ARCHITECTURE