

ZERO HUB

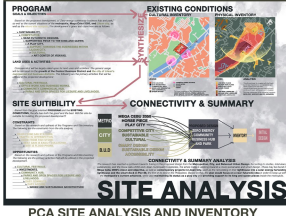
A ZERO ENERGY COMMUNITY HUB IN LILOAN CEBU
DESIGNED BY MICHAEL PIO DIANZON // ARCH 142

THE DESIGN PROCESS

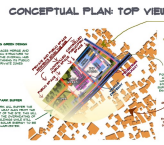
These problems, and further evolves from the process of site analysis and concepts. The design is heavily influenced by the requirement to offer. Given birth to by some one of a city's key issues, paired with providing for a city and Zero hub was born from these difficulties and continues to evolve from them.

WHAT IS THE BUILDING?

structure serves as a community commercial centre. The concept behind this architectural style is to serve as a commercial link between Liloan City and the metropolis' other important business centers. There are three primary areas. A commercial structure, an office structure, and an Amphitheatre with a park.



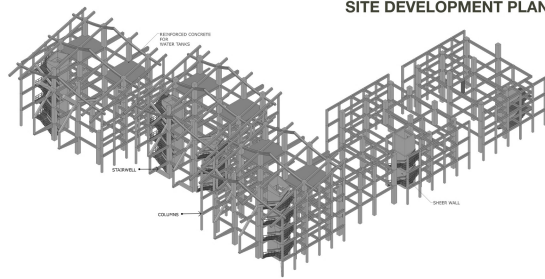
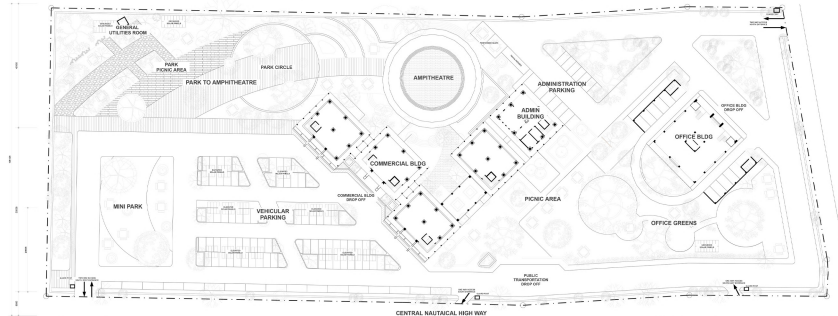
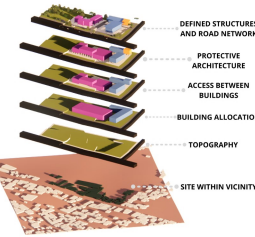
CONCEPTUAL



CONCEPTUAL



SITE CONCEPTUAL DEVELOPMENT

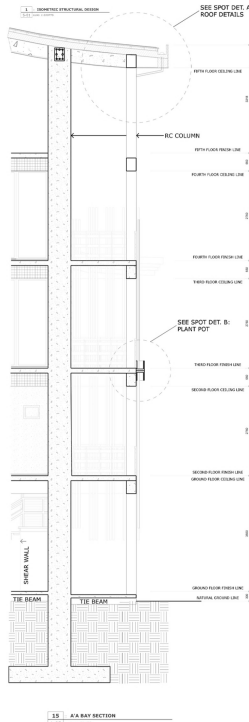


ISO STRUCTURAL LAYOUT

ISO STORM DRAIN LAYOUT

ISO SANITARY LAYOUT

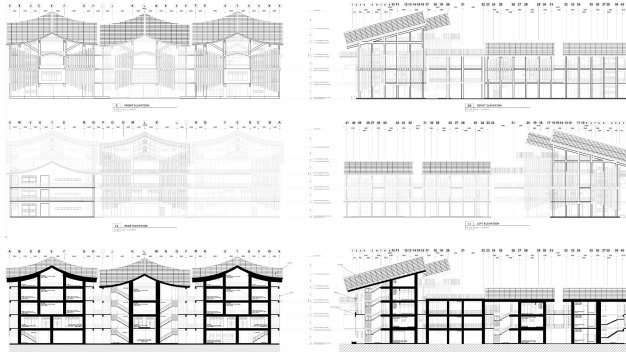
ISO WATER LAYOUT



ROOF DETAILS AND LOAD COMPUTATIONS

SPOT DETAILS OF BAY SECTION

ELEVATIONS AND SECTIONS



ZERO ENERGY CONCEPT

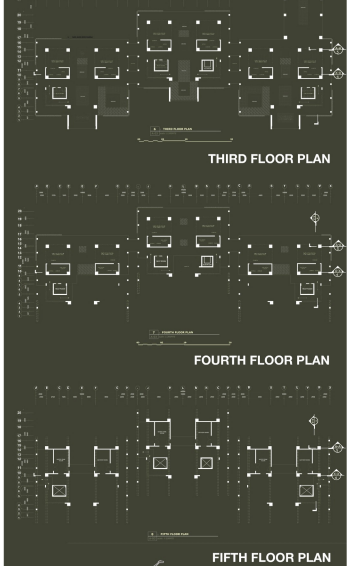
The main idea behind the design was to achieve a net zero energy building, a design that generates as much or more energy than it requires, while also circling around the design to consume less energy through natural ways in design and a green and open flow of movement for people.

BIGAMY OF GREEN AND GREY

As a green design looping around the grey space, the bigamy of green and grey areas entirely envelops the design. Each region will emphasize green spaces and attribute itself to complement the structure's greys, whereas the building's systems center around feeding the plants and conserving water.

PROTECTIVE BUILDING SYSTEMS

The site is designed by being surrounded by catch basins and a storm drain system that recycles water to feed the plants during dry seasons. Other protective mechanisms are visible in the structures, as the plants shade the interiors while simultaneously combating carbon emissions and urban heat islands.



AERIAL PERSPECTIVE

